


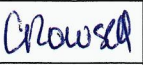


## Nalcor Energy – Lower Churchill Project



## LCP Organizational Charts

LCP-PT-MD-0000-PM-CR-0001-01

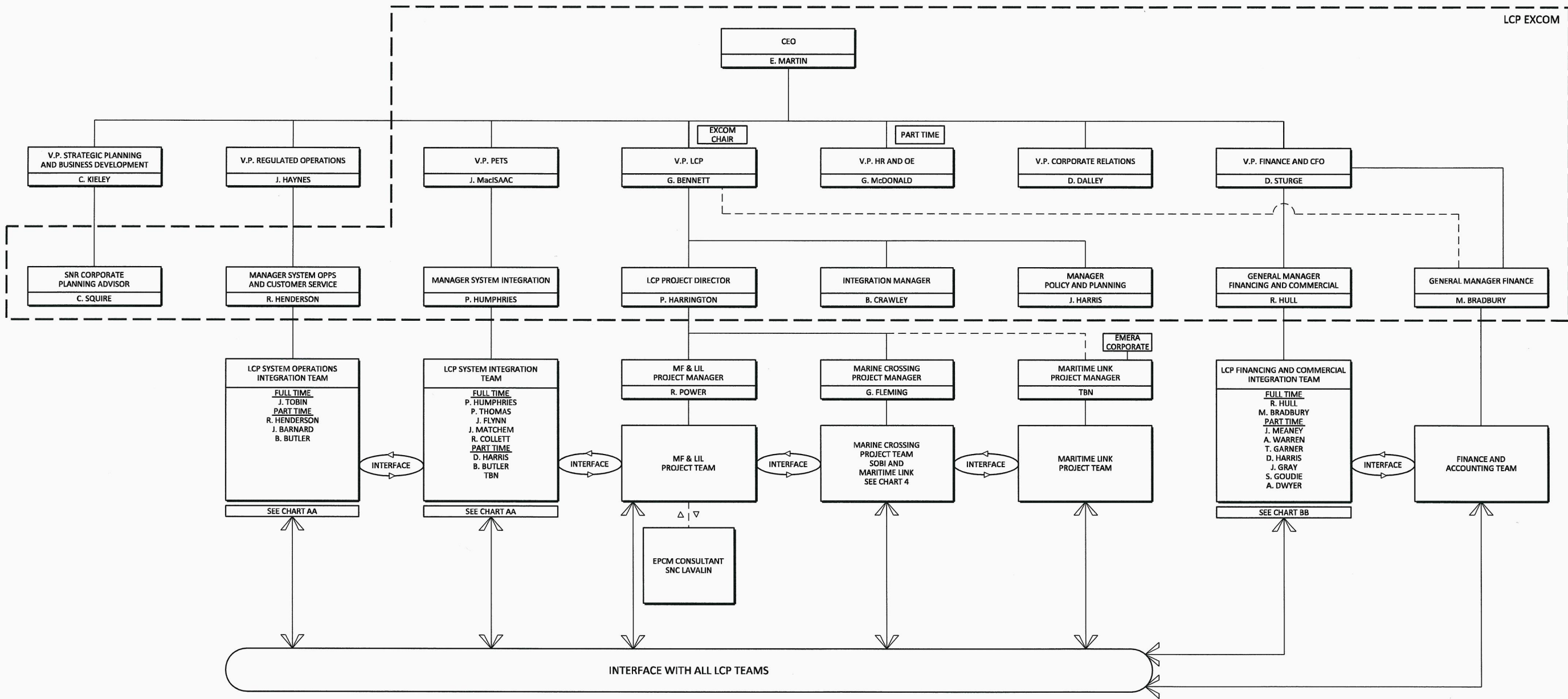
Comments:	Total # of Pages (Including Cover): 15
-----------	--

B1	07-Dec-2011	Approved for use/Implementation	 J. Kean/ M. McGrath	 C. Rowsell		 R. Power	 P. Harrington
Status/ Revision	Date	Reason For Issue	Prepared By	Functional Manager Approval	Project Manager (Marine Crossings) Approval	Project Manager (Generation + Island Link) Approval	Project Director Approval
<b>CONFIDENTIALITY NOTE:</b>		This document contains intellectual property of the Nalcor Energy – Lower Churchill Project and shall not be copied, used or distributed in whole or in part without the prior written consent from the Nalcor Energy – Lower Churchill Project.					

Inter-Departmental / Discipline Approval (where required)

Department	Department Manager Approval	Date
VP LCP	<i>[Signature]</i> G. Bennett.	2011 Dec 09
	Name	
	Name	
	Name	





NOTES

1. JDC-ML	APPOINTED REPRESENTATIVES	NALCOR CO-CHAIR: G. BENNETT, + P. HARRINGTON, B. CRAWLEY, L. CLARKE EMERA CO-CHAIR: N. TOWER, + R. JANEGA, K. CANTWELL, B. RENDELL
1. JDC-LIL	APPOINTED REPRESENTATIVES	NALCOR CHAIR: G. BENNETT, + P. HARRINGTON, B. CRAWLEY, L. CLARKE EMERA: N. TOWER, R. JANEGA, K. CANTWELL, B. RENDELL

GATEKEEPER:	
LCP VP:	<i>[Signature]</i>
PROJECT DIRECTOR:	<i>[Signature]</i>

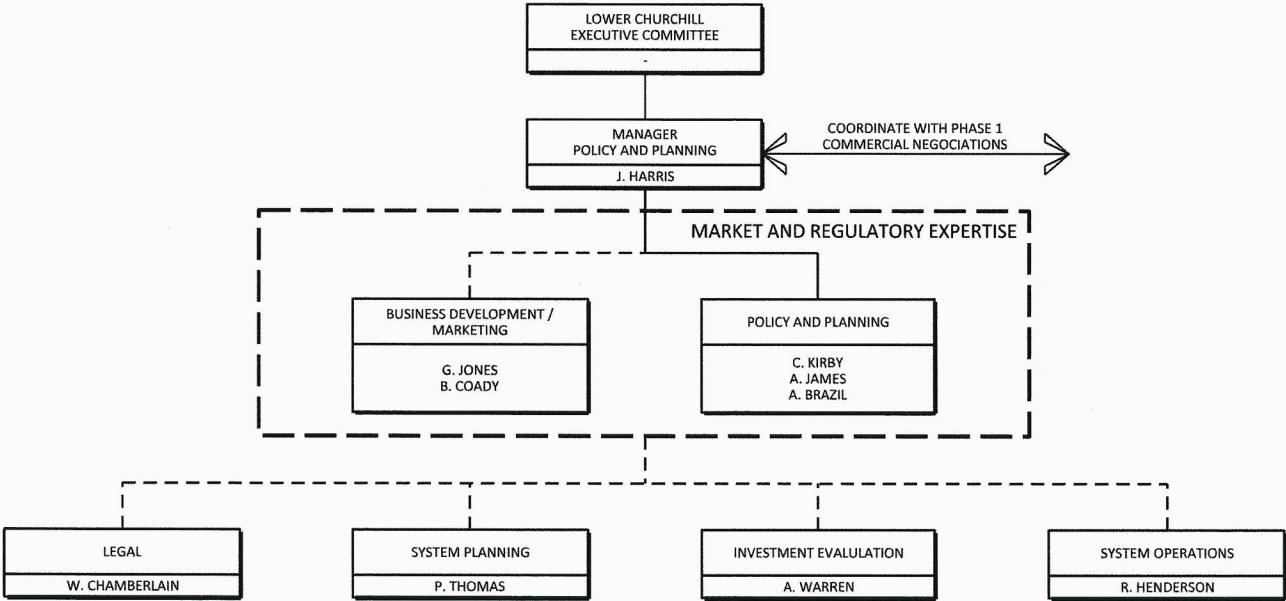


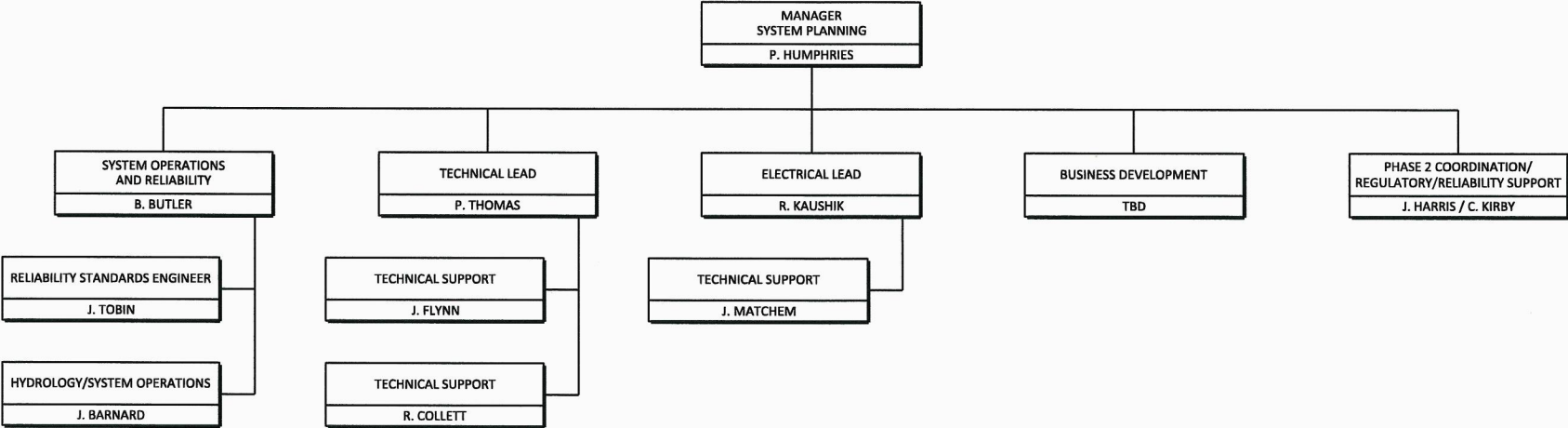
NALCOR ENERGY - LOWER CHURCHILL PROJECT

LCP PHASE I  
INTEGRATION AND EXCOM

UPDATED: 12 DECEMBER 2011







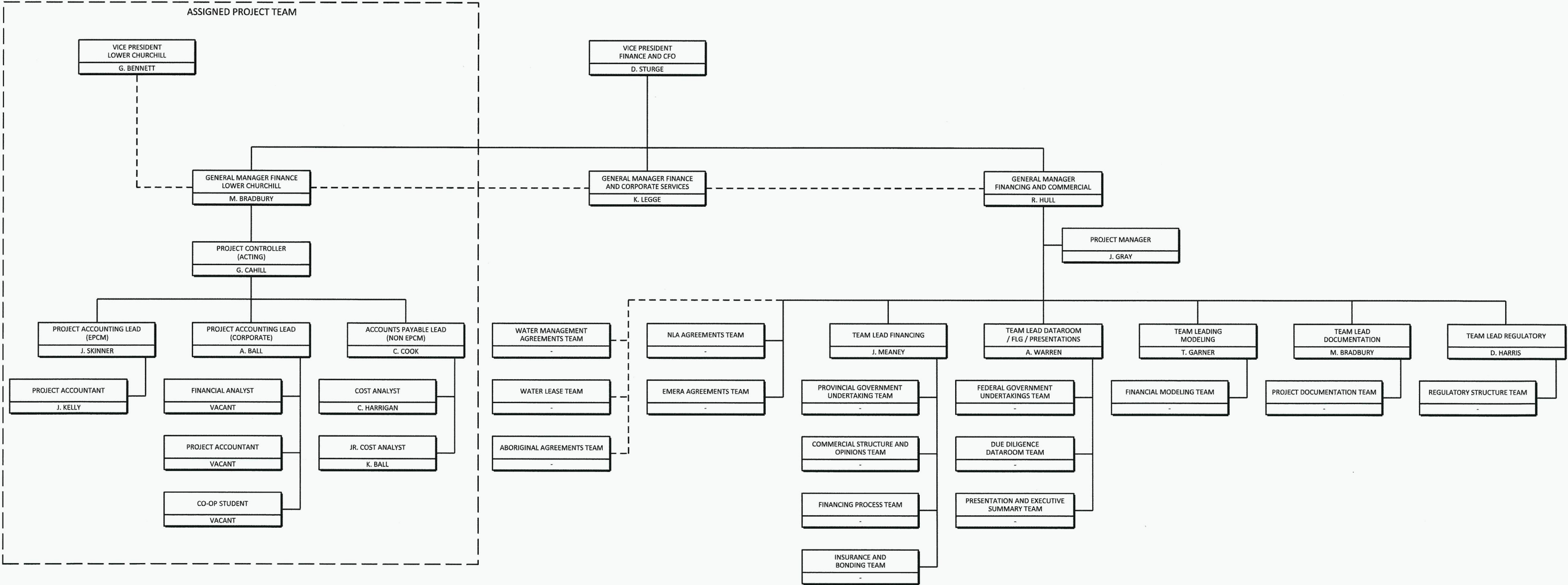
NALCOR ENERGY - LOWER CHURCHILL PROJECT

LCP PHASE I  
SYSTEM INTEGRATION TEAM - 2011  
CHART AA

PROJECT DIRECTOR:

UPDATED: 5 OCTOBER 2011

B1

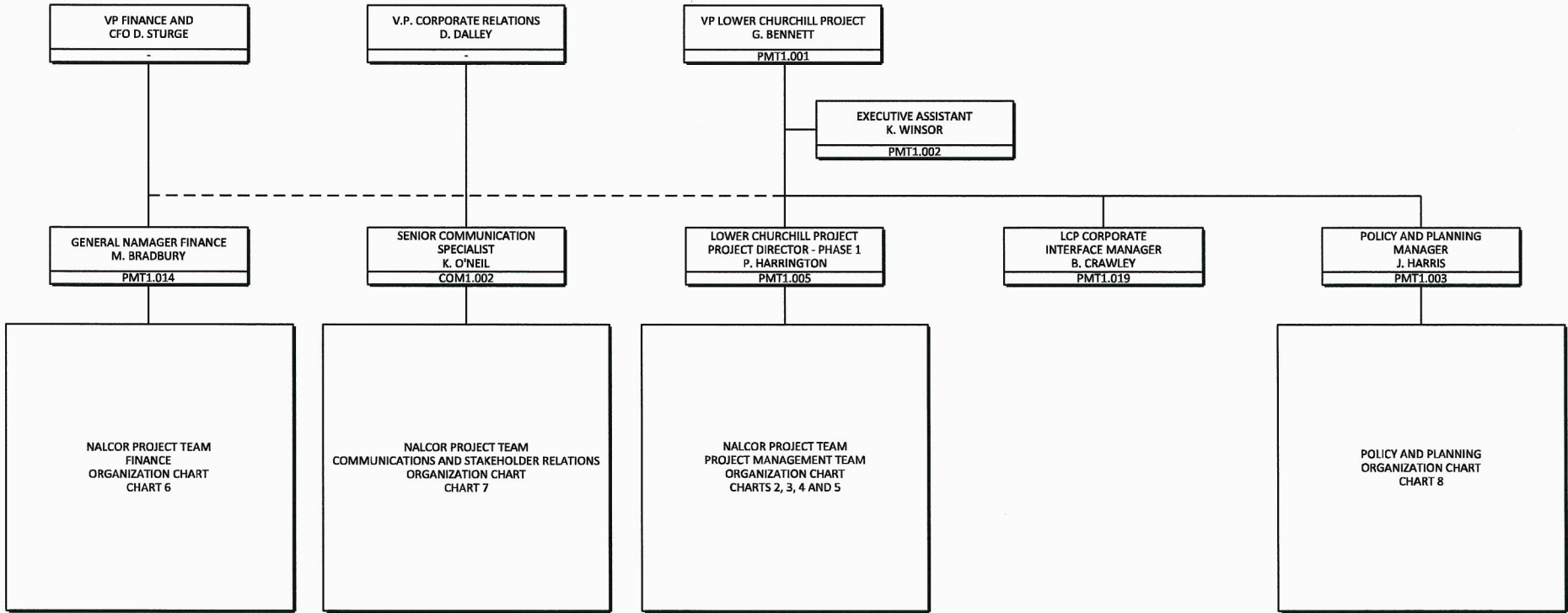



NALCOR ENERGY - LOWER CHURCHILL PROJECT

LCP PHASE I  
FINANCE TEAM  
CHART BB

GATEKEEPER:	
LCP VP:	<i>[Signature]</i>
PROJECT DIRECTOR:	<i>[Signature]</i>

UPDATED: 6 OCTOBER 2011





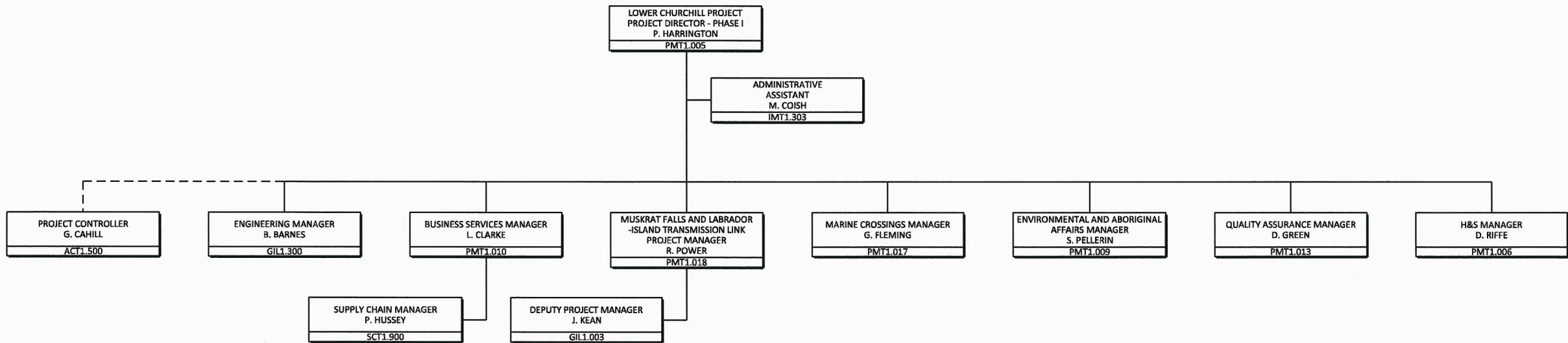
NALCOR ENERGY - LOWER CHURCHILL PROJECT

NALCOR PROJECT TEAM  
VP AND REPORTS  
ORGANIZATION CHART  
CHART 1

GATEKEEPER:	
LCP VP:	<i>[Signature]</i>
PROJECT DIRECTOR:	<i>[Signature]</i>

UPDATED: 12 DECEMBER 2011

B1



NALCOR ENERGY - LOWER CHURCHILL PROJECT

NALCOR PROJECT TEAM  
PROJECT MANAGEMENT TEAM  
ORGANIZATION CHART  
CHART 2

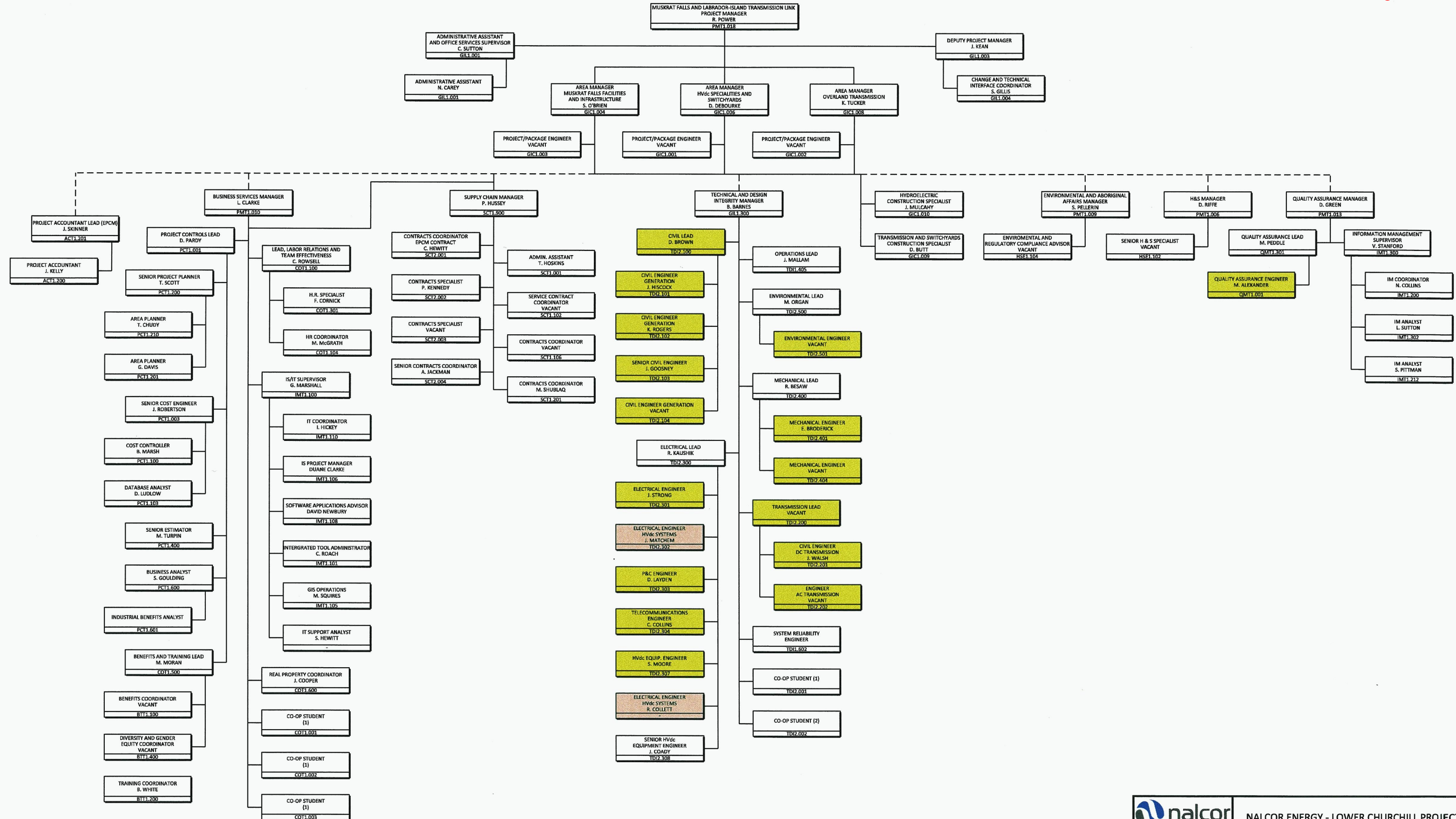
PROJECT DIRECTOR:

*P. Harrington*

UPDATED: 12 DECEMBER 2011

B1






**LEGEND**

SECONDED TO SYSTEM PLANNING

FULFILLS BOTH T&D AND PACKAGE ENGINEER ROLE



NALCOR ENERGY - LOWER CHURCHILL PROJECT

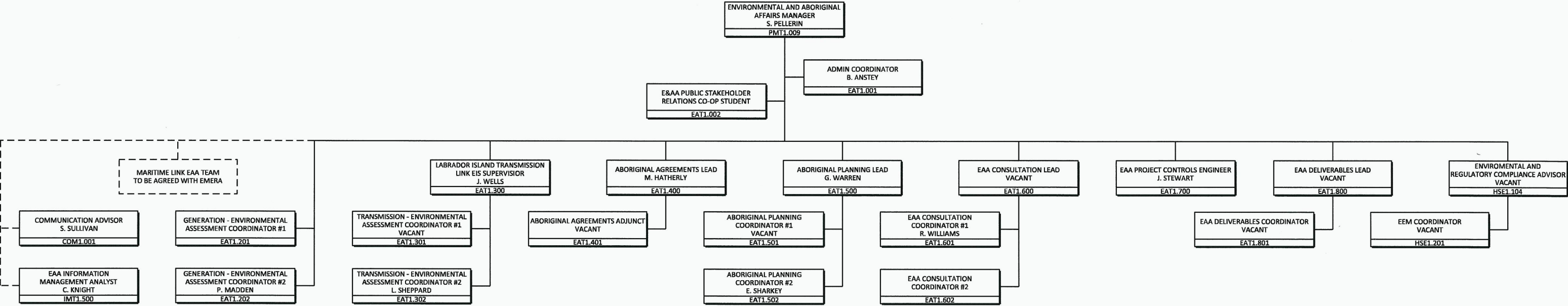
NALCOR PROJECT TEAM  
MUSKRAT FALLS AND LABRADOR  
ISLAND TRANSMISSION LINK PROJECTS  
ORGANIZATION CHART  
CHART 3

PROJECT DIRECTOR: *P. Houghton*

UPDATED: 12 DECEMBER 2011

B1





NALCOR ENERGY - LOWER CHURCHILL PROJECT

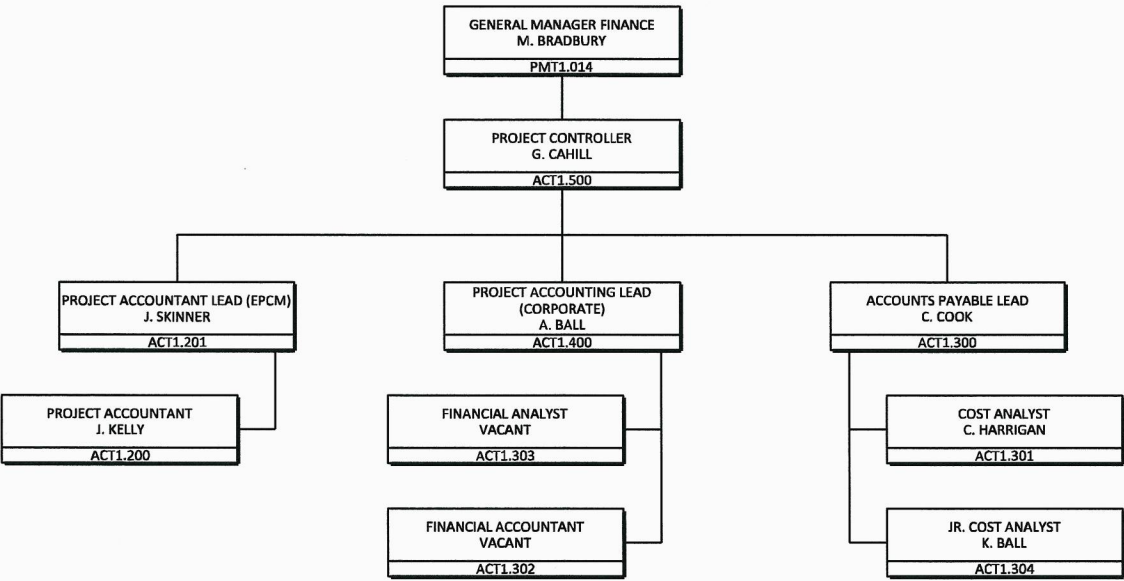
NALCOR PROJECT TEAM  
ENVIROMENTAL AND ABORIGINAL AFFAIRS  
ORGANIZATION CHART  
CHART 5

PROJECT DIRECTOR:

UPDATED: 12 DECEMBER 2011

B1



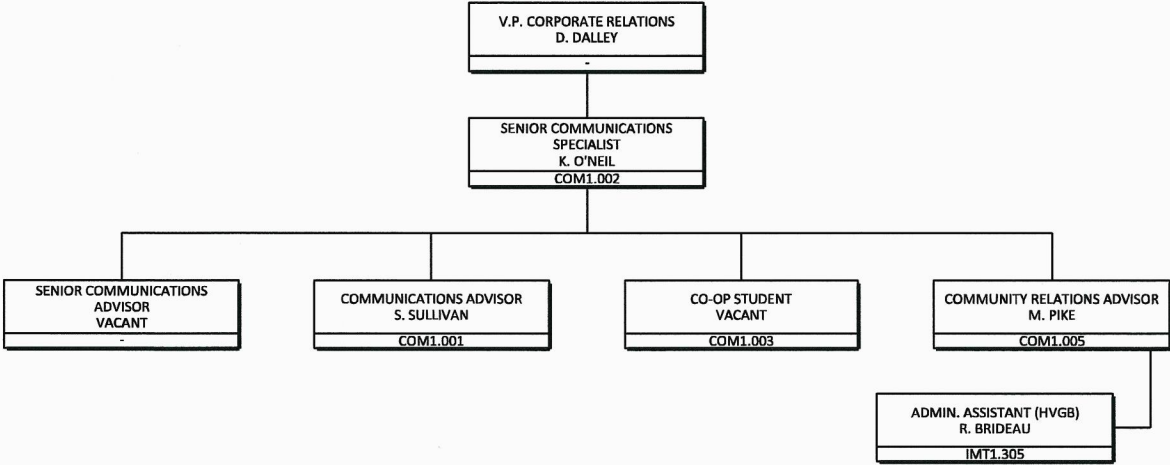


NALCOR ENERGY - LOWER CHURCHILL PROJECT

NALCOR PROJECT TEAM  
FINANCE  
ORGANIZATION CHART  
CHART 6

GATEKEEPER:	
LCP VP:	<i>[Signature]</i>
PROJECT DIRECTOR:	<i>[Signature]</i>

UPDATED: 12 DECEMBER 2011



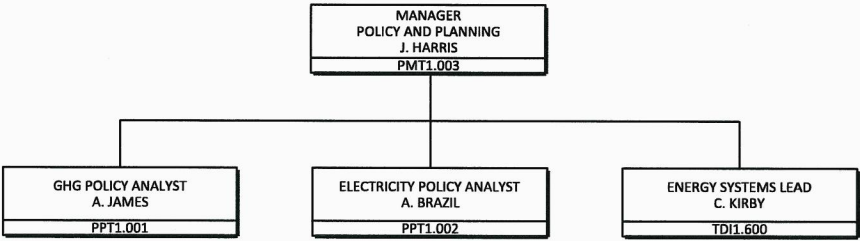
NALCOR ENERGY - LOWER CHURCHILL PROJECT

NALCOR PROJECT TEAM  
COMMUNICATIONS AND STAKEHOLDER RELATIONS  
ORGANIZATION CHART  
CHART 7

PROJECT DIRECTOR: *P. Hampton*

UPDATED: 12 DECEMBER 2011





NALCOR ENERGY - LOWER CHURCHILL PROJECT

NALCOR PROJECT TEAM  
POLICY AND PLANNING  
ORGANIZATION CHART  
CHART 8

PROJECT DIRECTOR: 

UPDATED: 5 OCTOBER 2011