


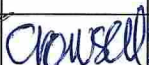



Nalcor Energy – Lower Churchill Project




LCP Organizational Charts

LCP-PT-MD-0000-PM-CR-0001-01

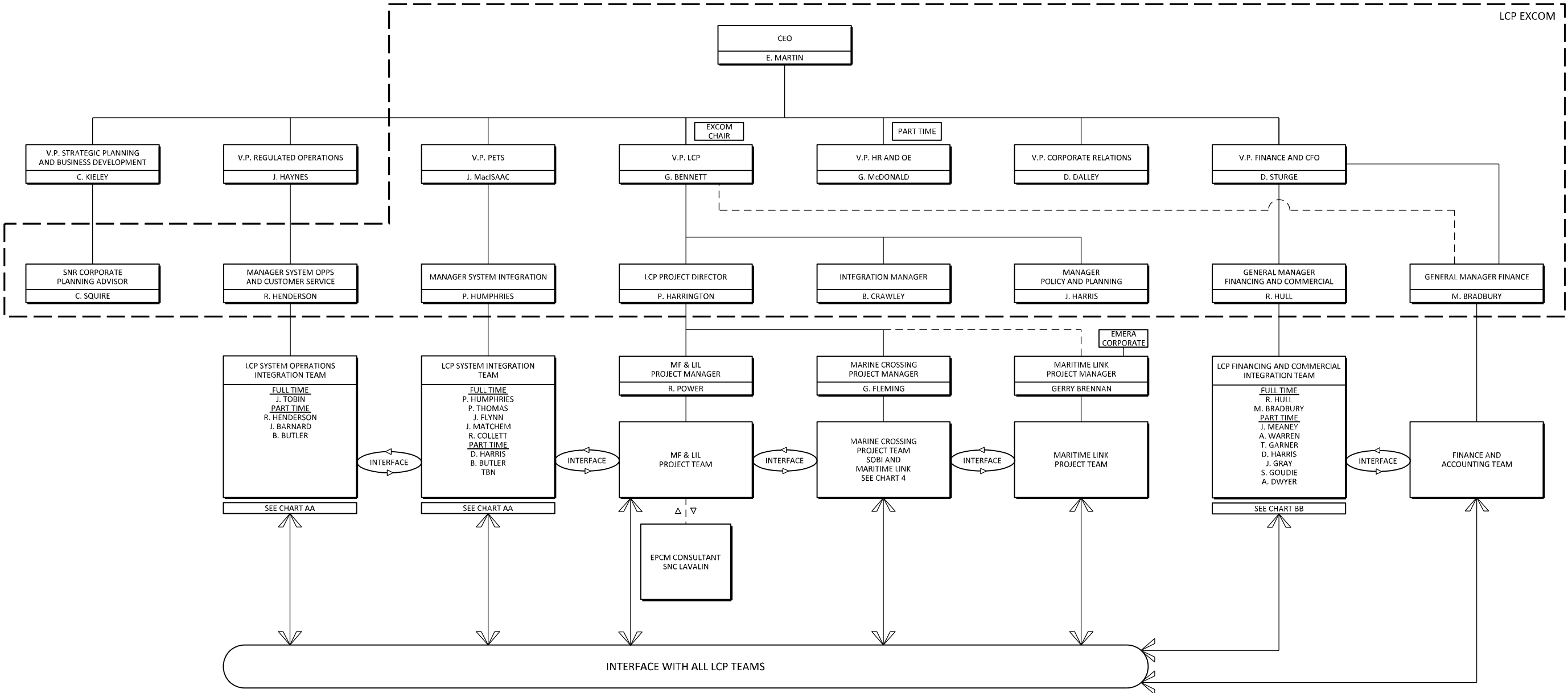
Comments: Re-issued to reflect approved organizational design changes.	Total # of Pages (Including Cover): 16
--	--

B2	24-Jan-2012	Re-Issued					
			M. McGrath	C. Rowsell	G. Fleming	R. Power	P. Harrington
B1	07-Dec-2011	Approved for use/ Implementation	J. Kean/ M. McGrath	C. Rowsell		R. Power	P. Harrington
Status/ Revision	Date	Reason For Issue	Prepared By	Functional Manager Approval	Project Manager (Marine Crossings) Approval	Project Manager (Generation + Island Link) Approval	Project Director Approval
CONFIDENTIALITY NOTE:			This document contains intellectual property of the Nalcor Energy – Lower Churchill Project and shall not be copied, used or distributed in whole or in part without the prior written consent from the Nalcor Energy – Lower Churchill Project.				

Inter-Departmental / Discipline Approval (where required)

Department	Department Manager Approval	Date
VP- LCP	G. Bennett	
	Name	
	Name	
	Name	
	Name	






NOTES

1. JDC-ML	APPOINTED REPRESENTATIVES	NALCOR CO-CHAIR: G. BENNETT,+ P. HARRINGTON, B. CRAWLEY, L. CLARKE EMERA CO-CHAIR: N. TOWER,+ R. JANEGA, K. CANTWELL, B. RENDELL
1. JDC-LIL	APPOINTED REPRESENTATIVES	NALCOR CHAIR: G. BENNETT,+ P. HARRINGTON, B. CRAWLEY, L. CLARKE EMERA: N. TOWER, R. JANEGA, K. CANTWELL, B. RENDELL

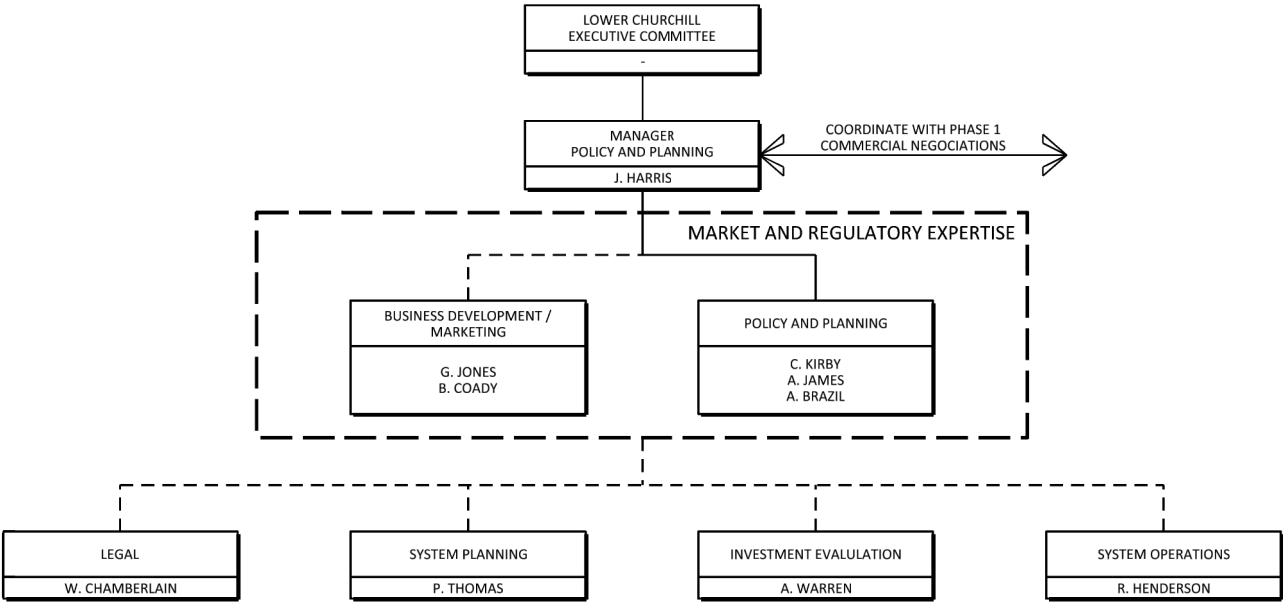
GATEKEEPER:	
LCP VP:	
PROJECT DIRECTOR:	

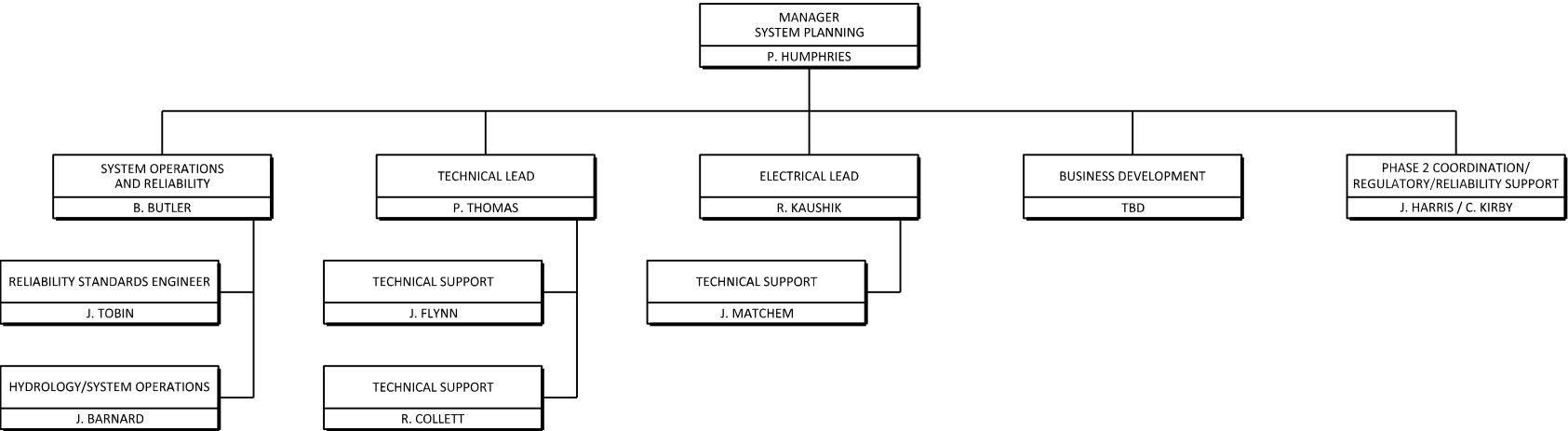


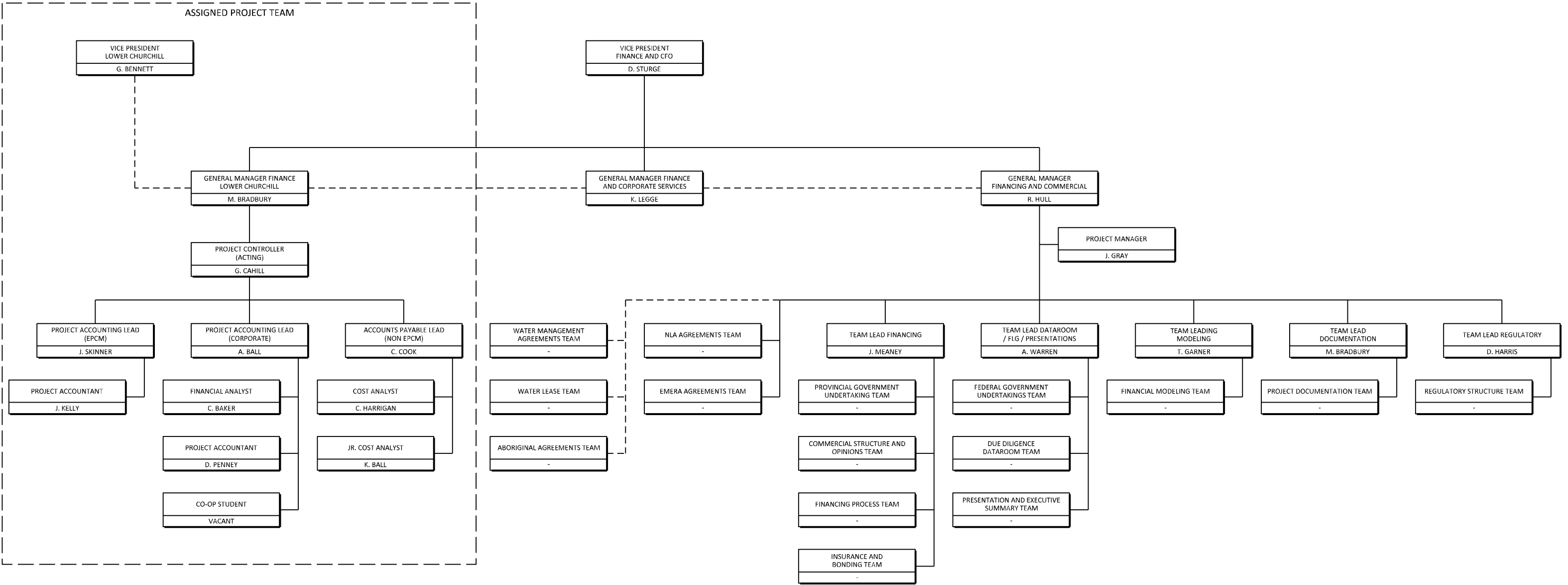
NALCOR ENERGY - LOWER CHURCHILL PROJECT

LCP PHASE I
INTEGRATION AND EXCOM

UPDATED: 13 JANUARY 2012





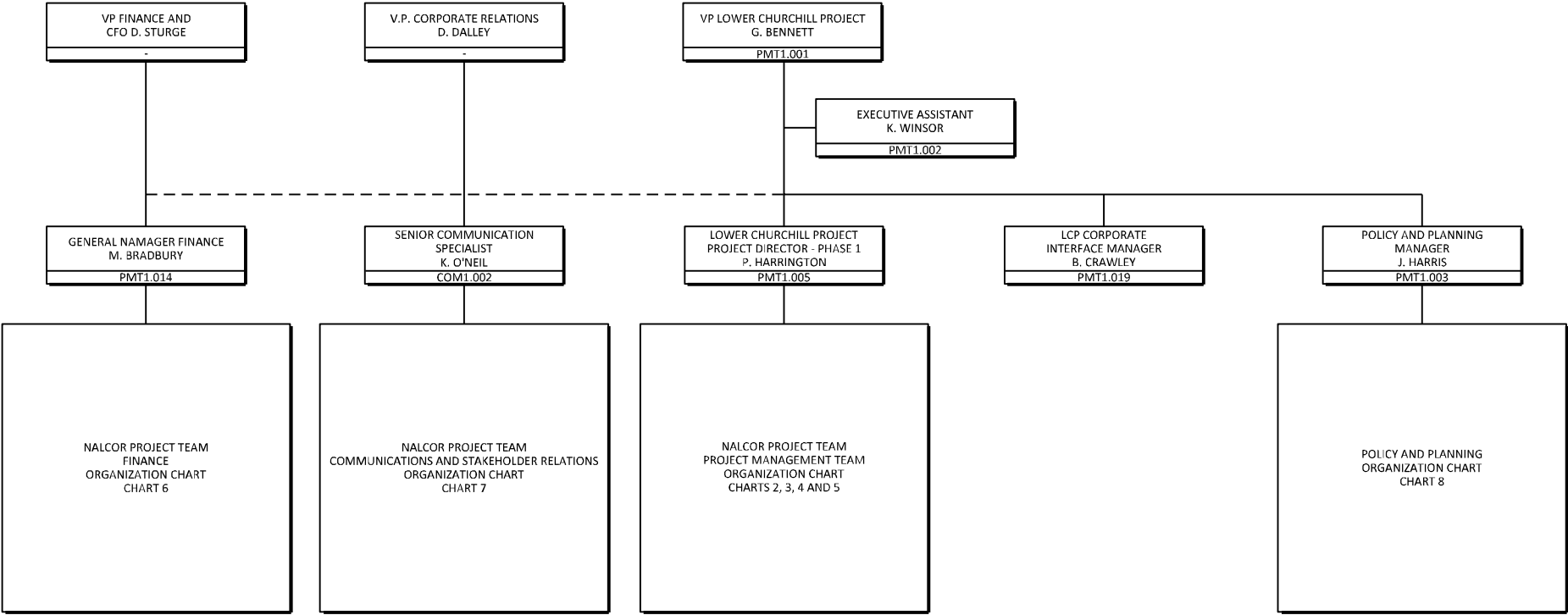


NALCOR ENERGY - LOWER CHURCHILL PROJECT

LCP PHASE I
FINANCE TEAM
CHART BB

GATEKEEPER:	
LCP VP:	
PROJECT DIRECTOR:	

UPDATED: 10 JANUARY 2012

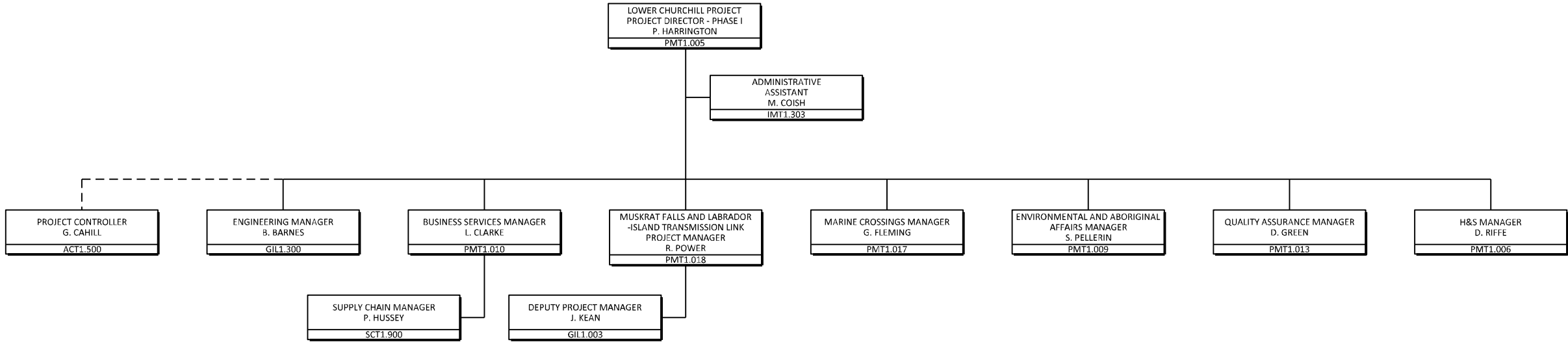


NALCOR ENERGY - LOWER CHURCHILL PROJECT

NALCOR PROJECT TEAM
VP AND REPORTS
ORGANIZATION CHART
CHART 1

GATEKEEPER:	
LCP VP:	
PROJECT DIRECTOR:	

UPDATED: 12 DECEMBER 2011

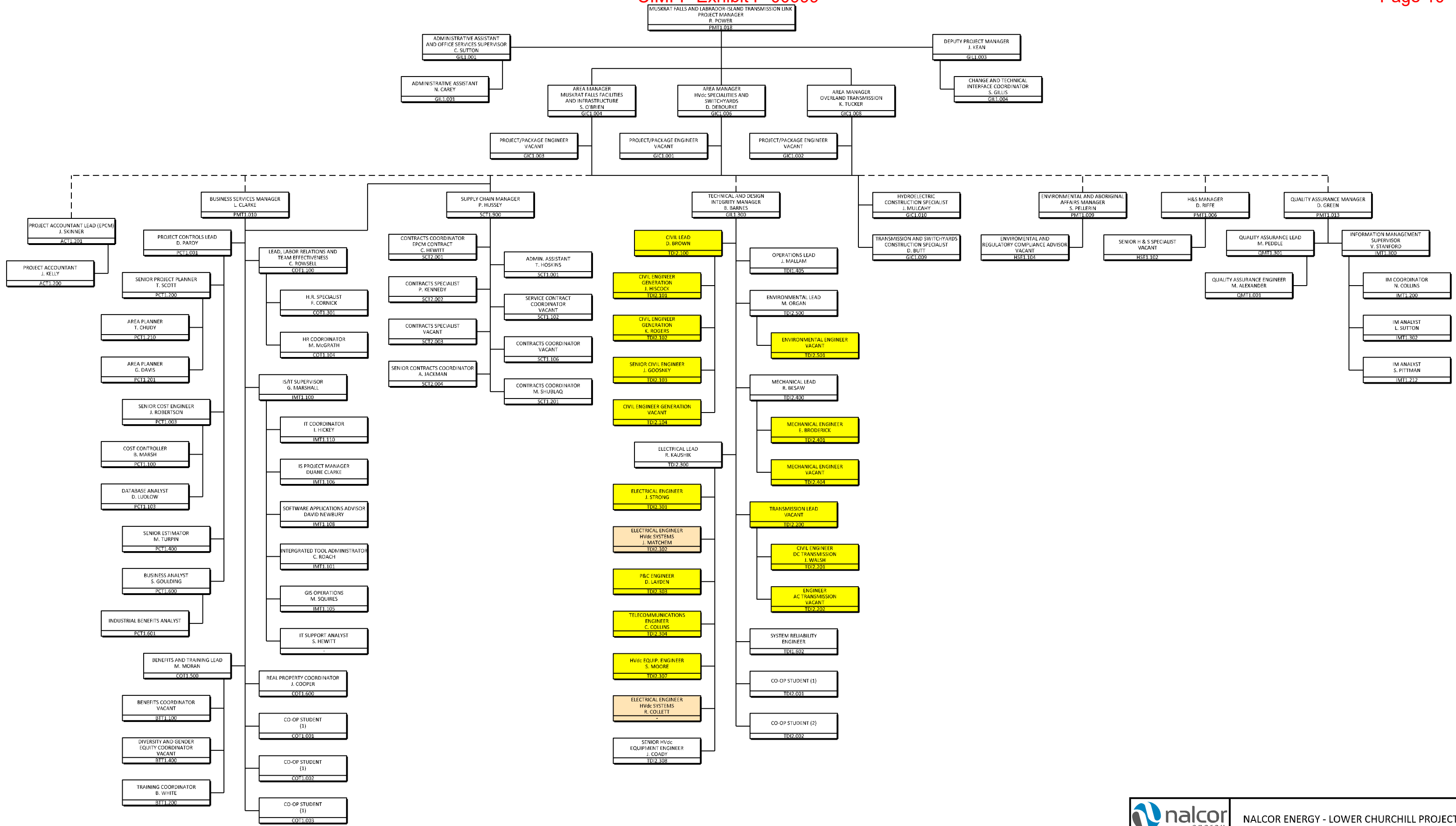


NALCOR ENERGY - LOWER CHURCHILL PROJECT

NALCOR PROJECT TEAM
PROJECT MANAGEMENT TEAM
ORGANIZATION CHART
CHART 2

PROJECT DIRECTOR:


UPDATED: 12 DECEMBER 2011



LEGEND

SECONDED TO SYSTEM PLANNING

FULFILLS BOTH T&D AND PACKAGE ENGINEER ROLE



NALCOR ENERGY - LOWER CHURCHILL PROJECT

NALCOR PROJECT TEAM

MUSKRAT FALLS AND LABRADOR ISLAND TRANSMISSION LINK PROJECTS

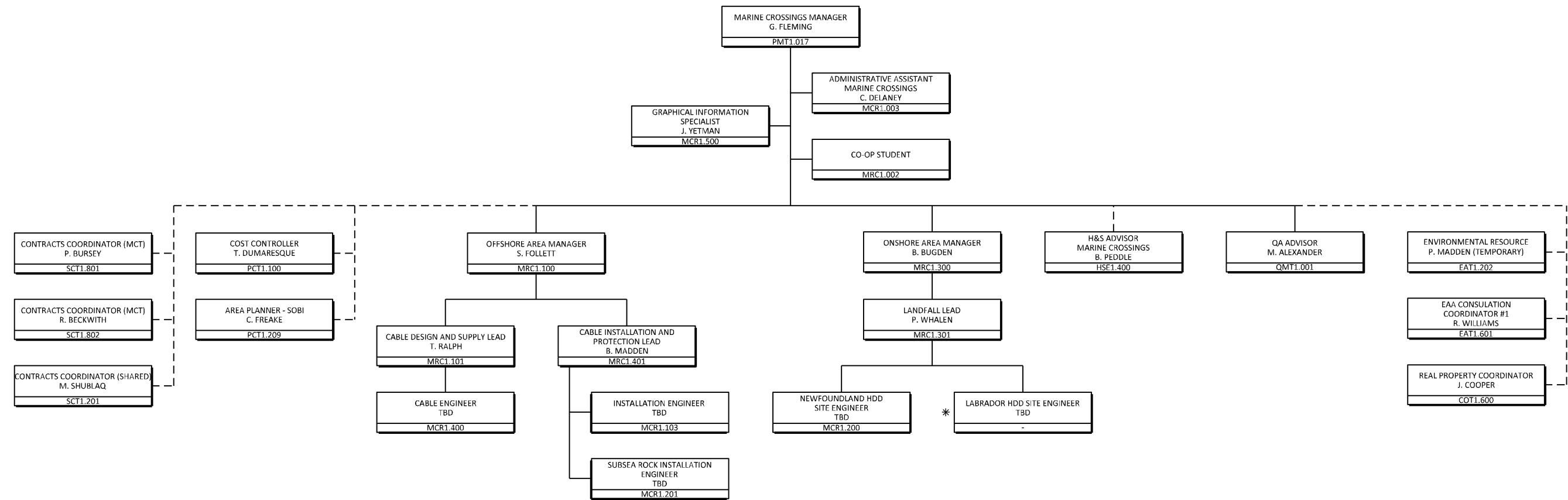
ORGANIZATION CHART

CHART 3

PROJECT DIRECTOR:


UPDATED: 10 JANUARY 2012

A4



LEGEND

* POSITION TO BE APPROVED

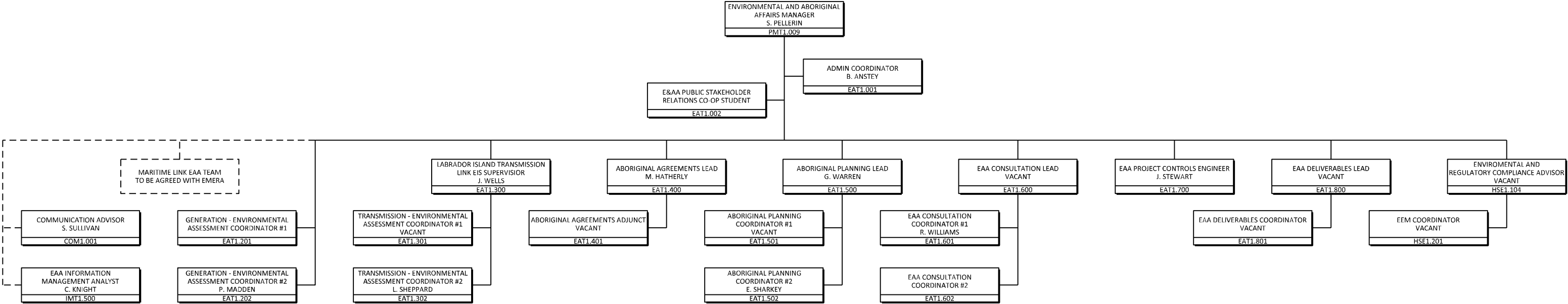


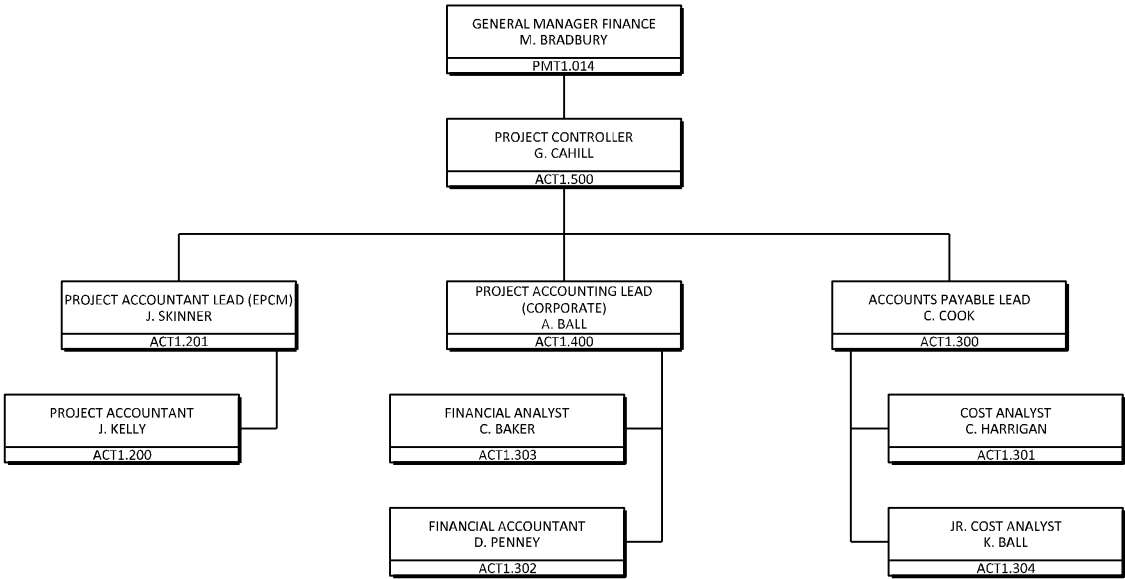
NALCOR ENERGY - LOWER CHURCHILL PROJECT

NALCOR PROJECT TEAM
MARINE CROSSINGS (SOBI)
ORGANIZATION CHART
CHART 4

PROJECT DIRECTOR: UPDATED: 19 JANUARY 2012

A1





NALCOR ENERGY - LOWER CHURCHILL PROJECT

NALCOR PROJECT TEAM
FINANCE
ORGANIZATION CHART
CHART 6

GATEKEEPER:	
LCP VP:	
PROJECT DIRECTOR:	

UPDATED: 10 JANUARY 2012

