

Nalcor Energy – Lower Churchill Project



LCP Organizational Charts

LCP-PT-MD-0000-PM-CR-0001-01

Comments: Issued for DG3 purposes.

Total # of Pages
(Including Cover):



16

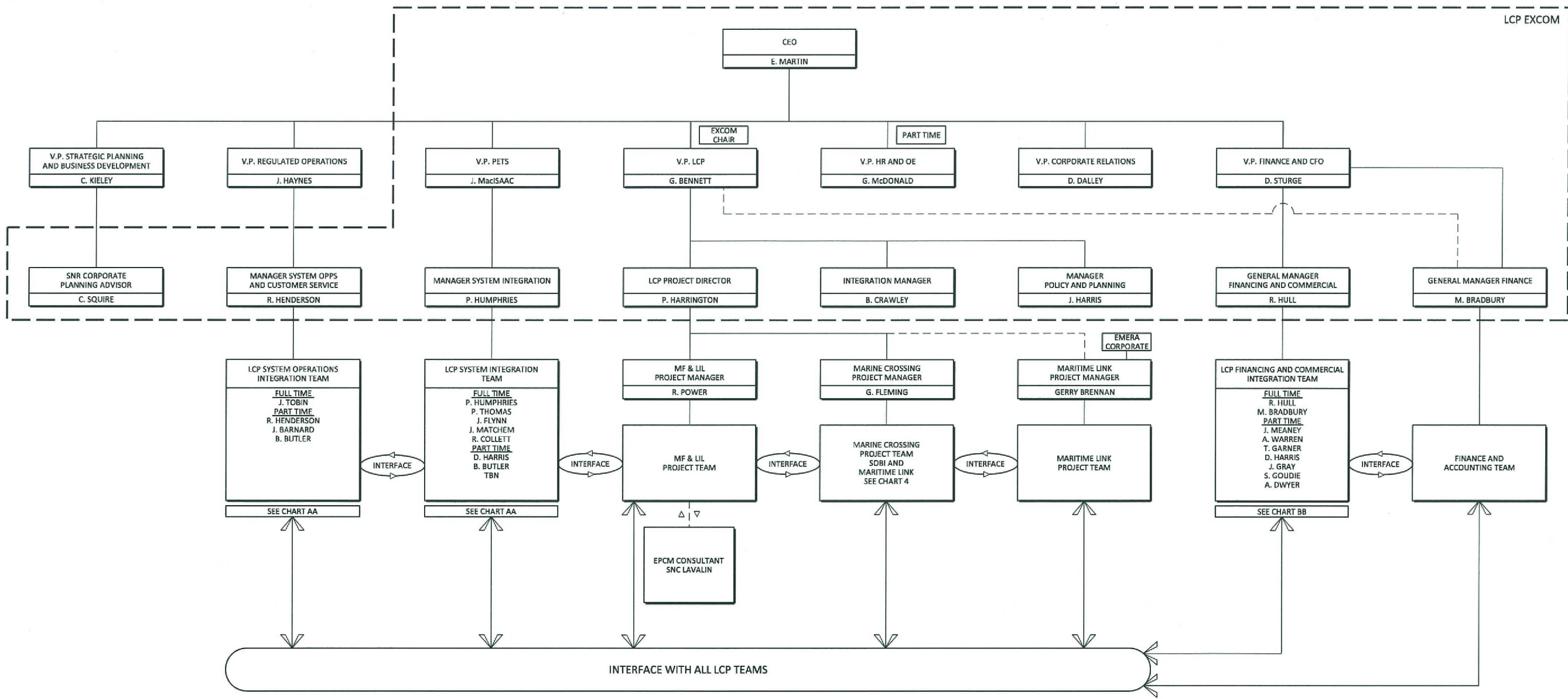
B3	21-Sep-2012	Re-Issued	<i>M.M.</i> M. McGrath	<i>C. Rowsell</i> C. Rowsell	<i>G. Fleming</i> G. Fleming	<i>R. Power</i> R. Power	<i>P. Harrington</i> P. Harrington
B2	24-Jan-2012	Re-Issued	M. McGrath	C. Rowsell	G. Fleming	R. Power	P. Harrington
B1	07-Dec-2011	Approved for use/ Implementation	J. Kean/ M. McGrath	C. Rowsell		R. Power	P. Harrington
Status/ Revision	Date	Reason For Issue	Prepared By	Functional Manager Approval	Project Manager (Marine Crossings) Approval	Project Manager (Generation + Island Link) Approval	Project Director Approval
CONFIDENTIALITY NOTE:		This document contains intellectual property of the Nalcor Energy – Lower Churchill Project and shall not be copied, used or distributed in whole or in part without the prior written consent from the Nalcor Energy – Lower Churchill Project.					

Inter-Departmental / Discipline Approval (where required)

[illegible]



 LOWER CHURCHILL PROJECT	NALCOR ENERGY - LOWER CHURCHILL PROJECT
LCP-PT-MD-0000-PM-CR-0001-01	
PROJECT DIRECTOR: 	UPDATED: 19 SEPTEMBER 2012



NOTES

1. JDC-ML APPOINTED REPRESENTATIVES NALCOR CO-CHAIR: G. BENNETT, P. HARRINGTON, B. CRAWLEY, L. CLARKE
EMERA CO-CHAIR: N. TOWER, R. JANEGA, K. CANTWELL, B. RENDELL

1. JDC-UL APPOINTED REPRESENTATIVES NALCOR CHAIR: G. BENNETT, P. HARRINGTON, B. CRAWLEY, L. CLARKE
EMERA: N. TOWER, R. JANEGA, K. CANTWELL, B. RENDELL



NALCOR ENERGY - LOWER CHURCHILL PROJECT

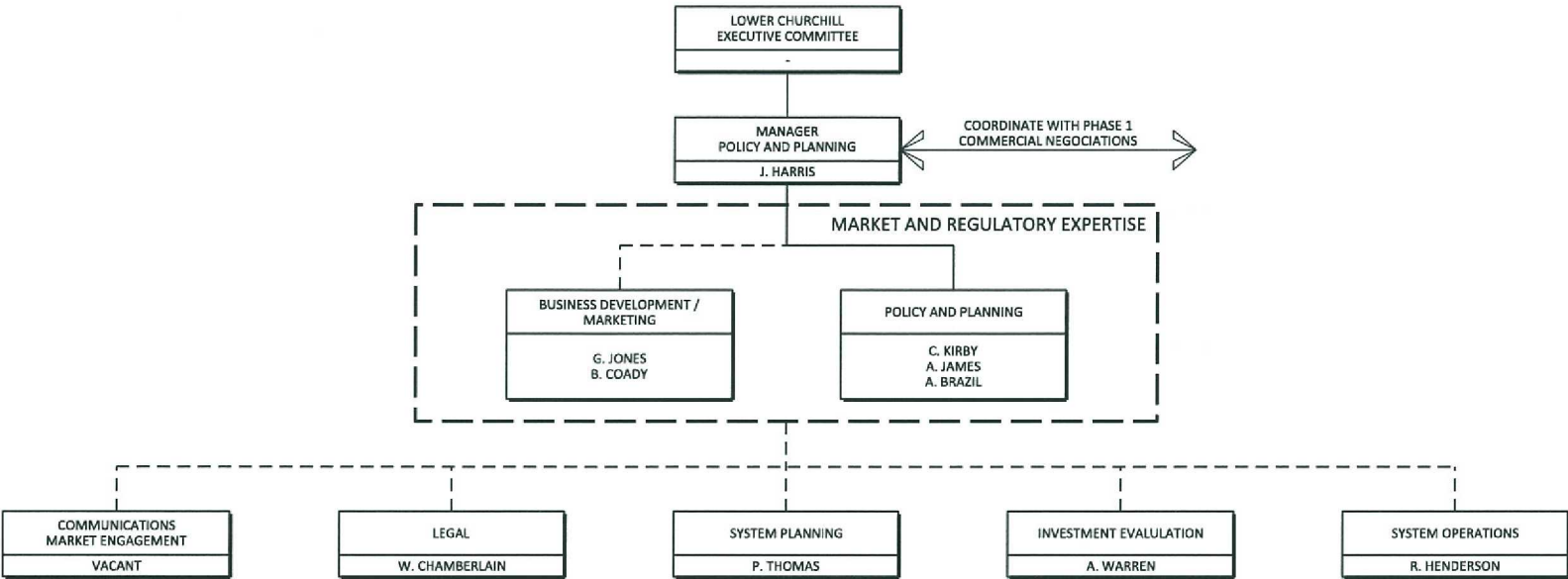
LCP PHASE I
INTEGRATION AND EXCOM

PROJECT DIRECTOR:

[Signature]

UPDATED: 13 JANUARY 2012

A2



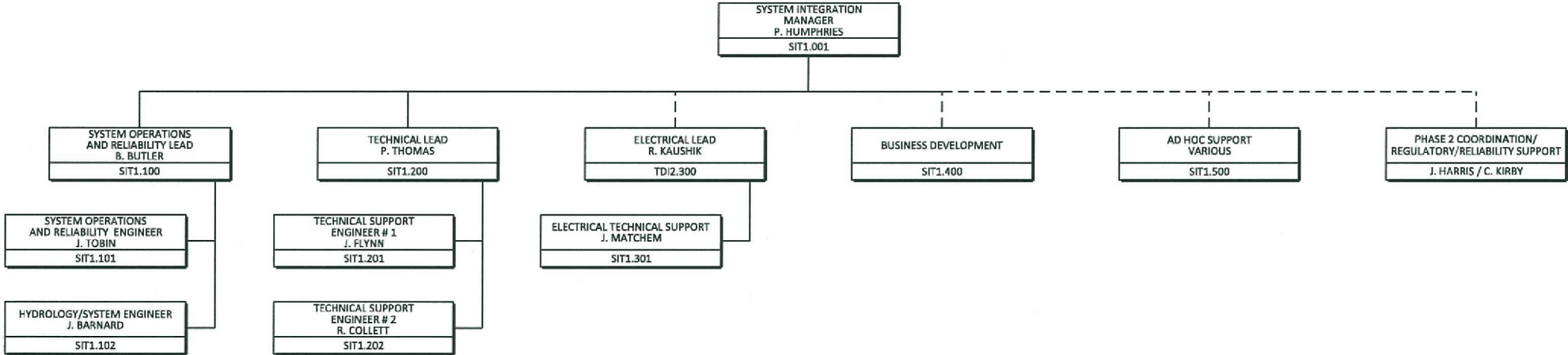
NALCOR ENERGY - LOWER CHURCHILL PROJECT

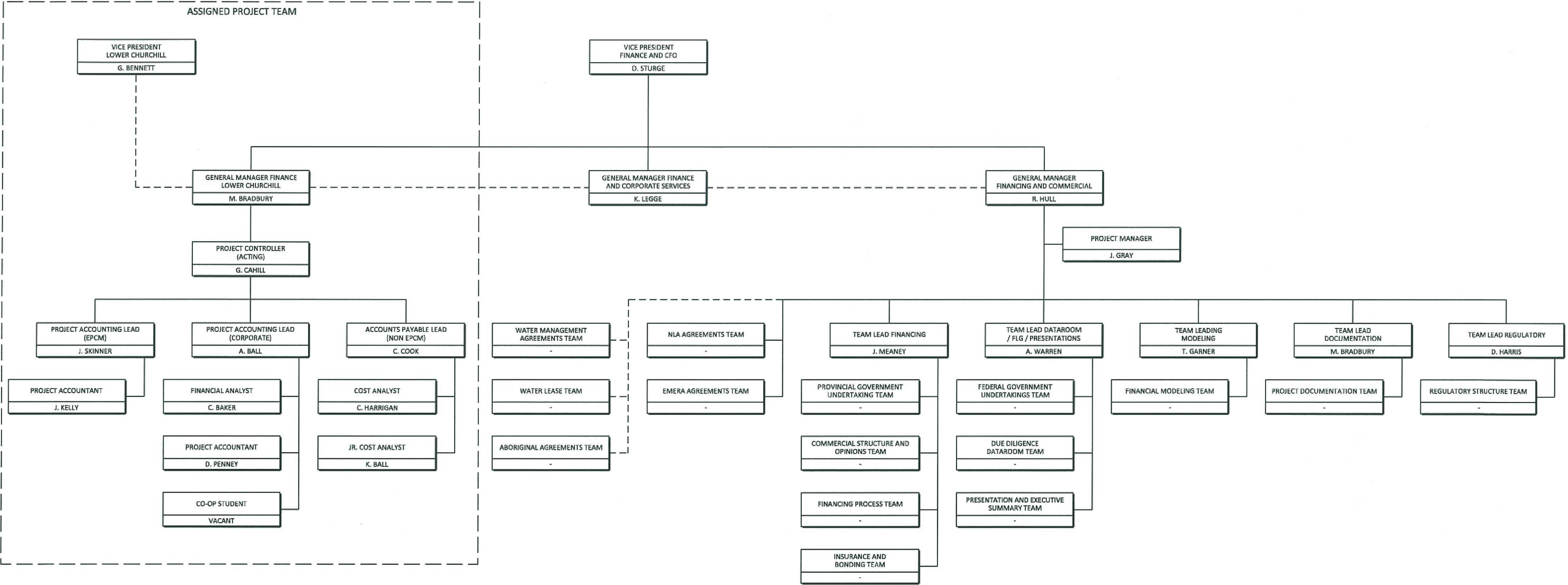
LCP PHASE 2
INTERNAL

PROJECT DIRECTOR: 

UPDATED: 13 OCTOBER 2011

A1





NALCOR ENERGY - LOWER CHURCHILL PROJECT

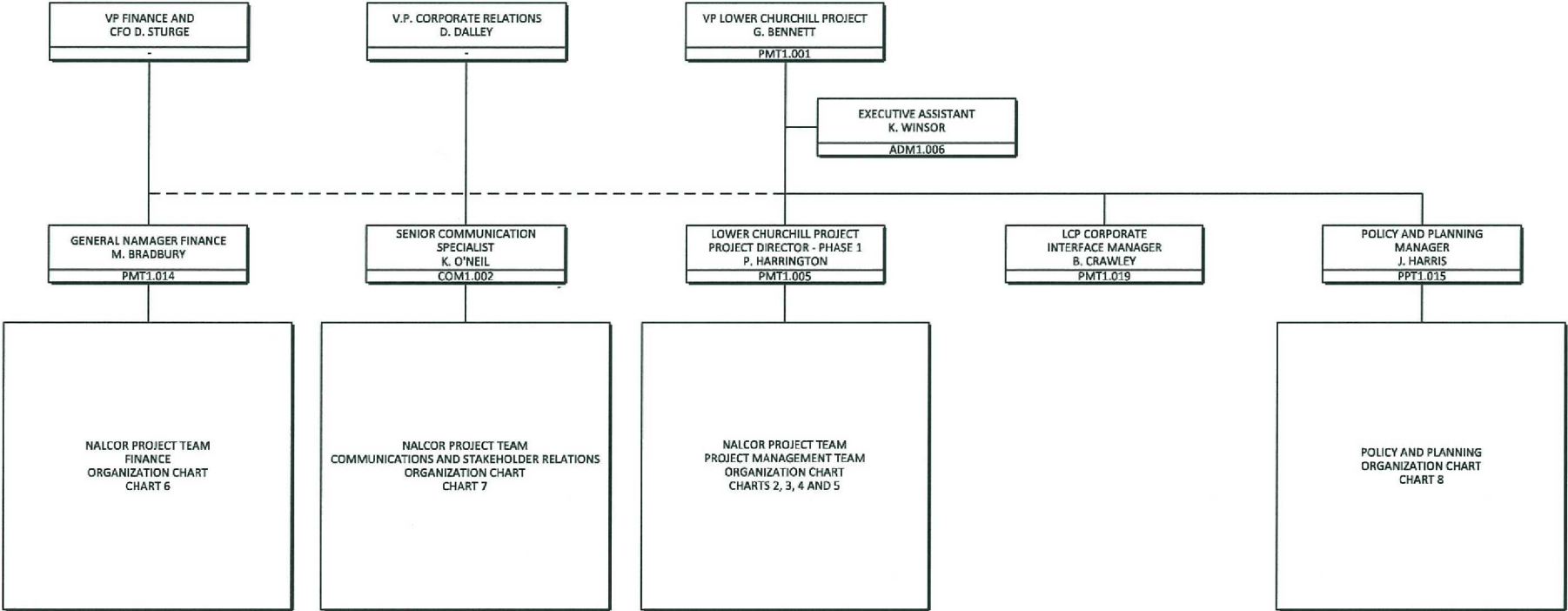
LCP PHASE I
FINANCE TEAM
CHART BB

PROJECT DIRECTOR:

[Signature]

UPDATED: 10 JANUARY 2012

A2



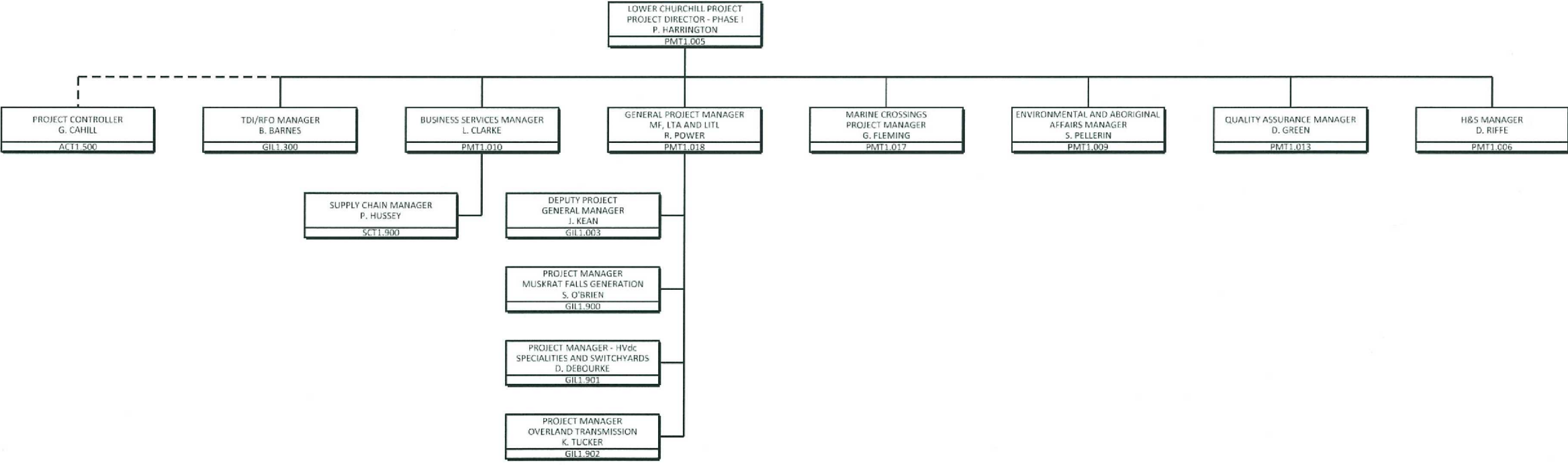
NALCOR ENERGY - LOWER CHURCHILL PROJECT

NALCOR PROJECT TEAM
VP AND REPORTS
ORGANIZATION CHART
CHART 1

PROJECT DIRECTOR:

UPDATED: 25 MAY 2012

A2



NALCOR ENERGY - LOWER CHURCHILL PROJECT

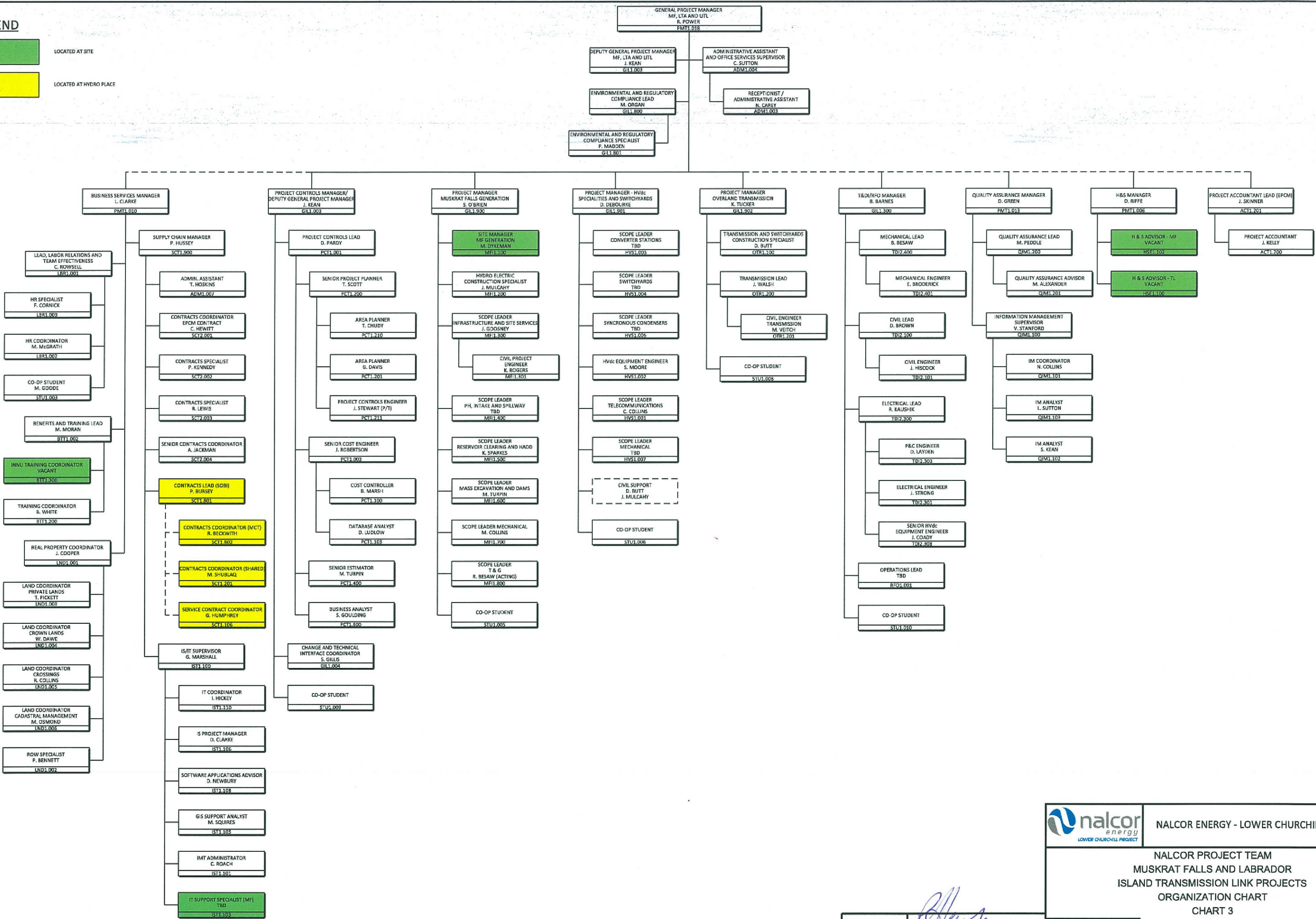
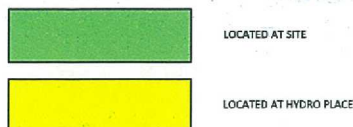
NALCOR PROJECT TEAM
PROJECT MANAGEMENT TEAM
ORGANIZATION CHART
CHART 2

PROJECT DIRECTOR:

UPDATED: 4 SEPTEMBER 2012

A2

LEGEND



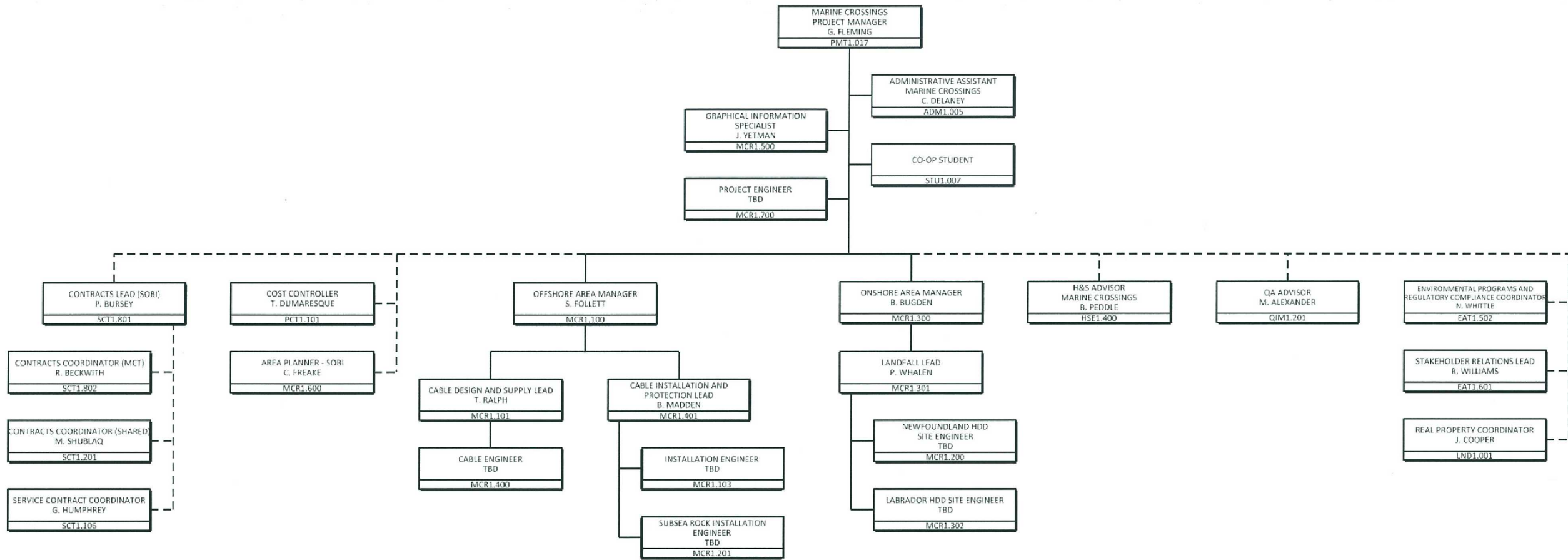
NALCOR ENERGY - LOWER CHURCHILL PROJECT

NALCOR PROJECT TEAM
MUSKRAT FALLS AND LABRADOR
ISLAND TRANSMISSION LINK PROJECTS
ORGANIZATION CHART
CHART 3

PROJECT DIRECTOR:

UPDATED: 21 AUGUST 2012

A4



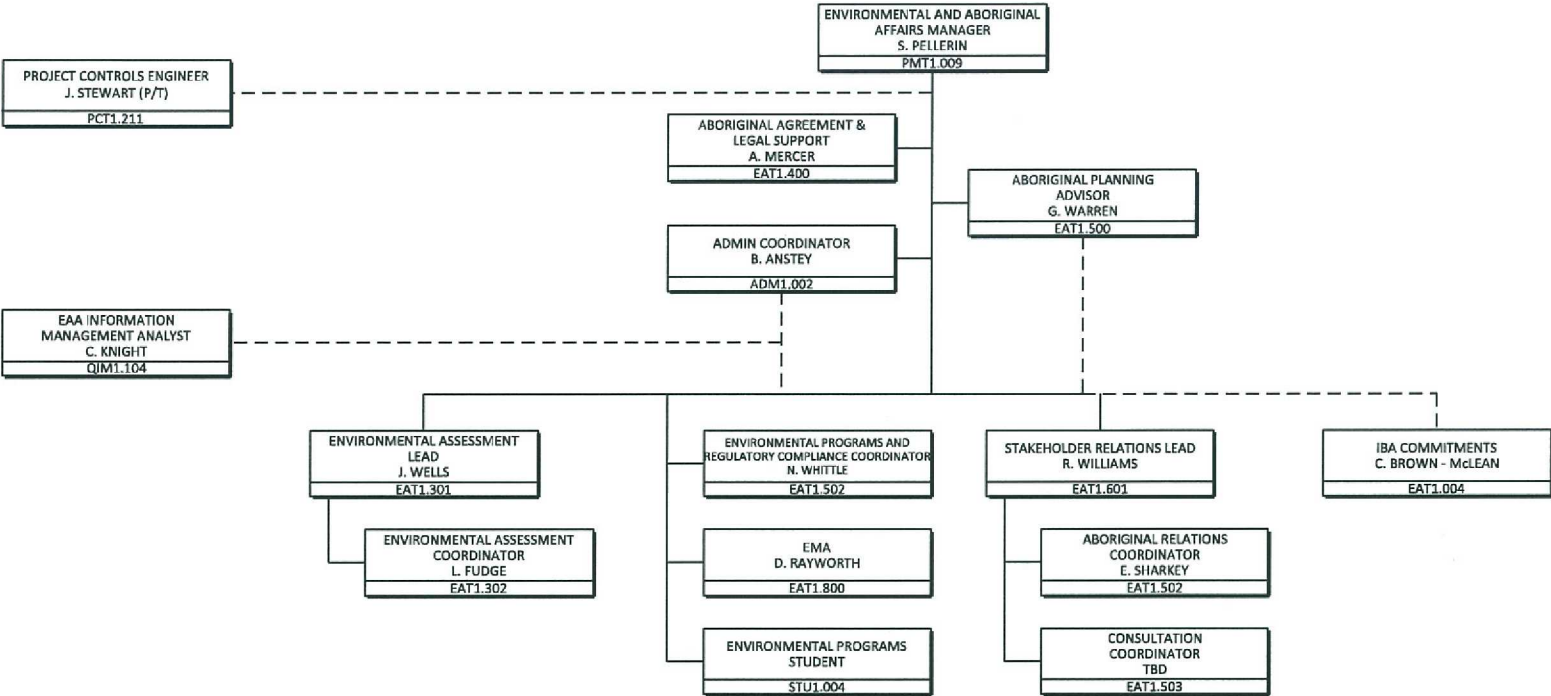
NALCOR ENERGY - LOWER CHURCHILL PROJECT

NALCOR PROJECT TEAM
MARINE CROSSINGS (SOBI)
ORGANIZATION CHART
CHART 4

PROJECT DIRECTOR:

UPDATED: 4 SEPTEMBER 2012

A1



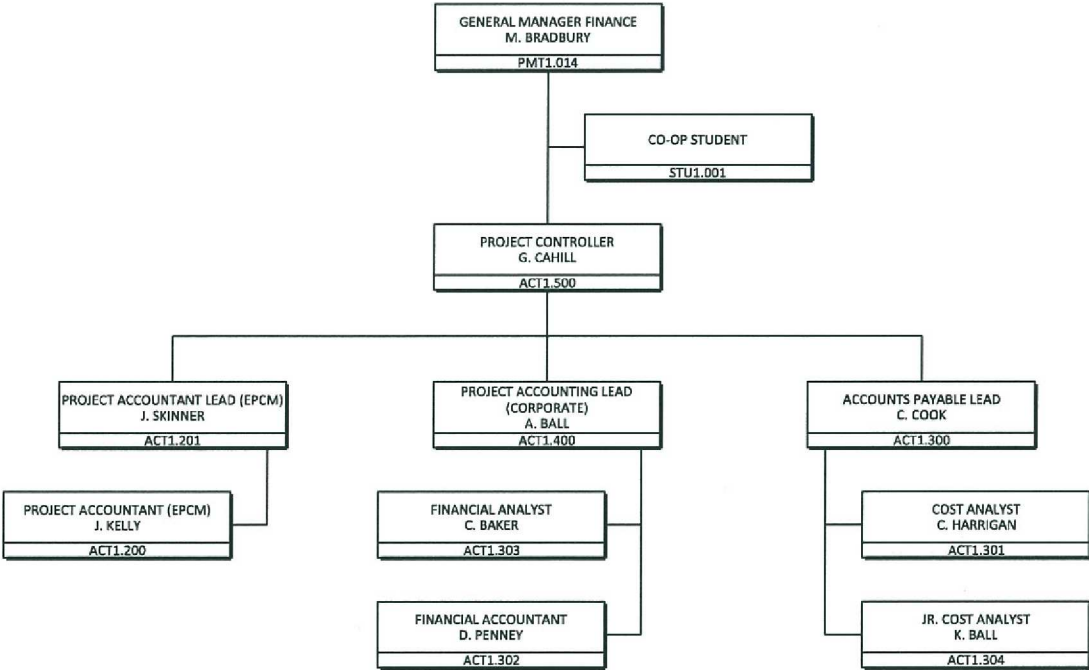
NALCOR ENERGY - LOWER CHURCHILL PROJECT

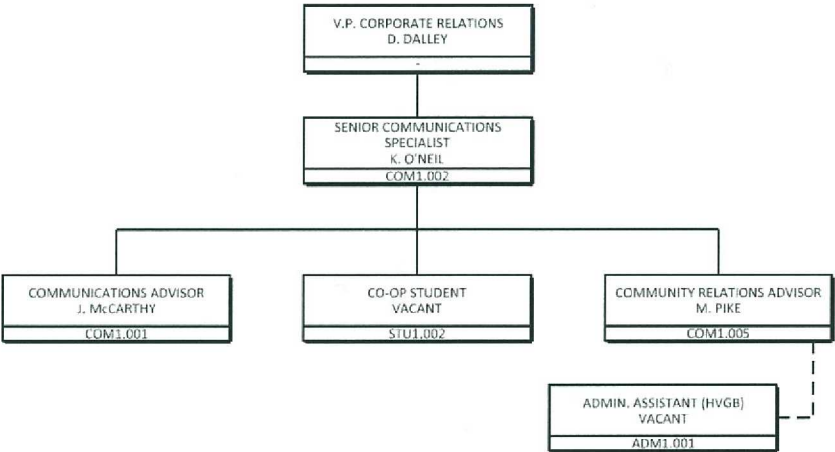
NALCOR PROJECT TEAM
ENVIRONMENTAL AND ABORIGINAL AFFAIRS
ORGANIZATION CHART
CHART 5

PROJECT DIRECTOR:

UPDATED: 19 SEPTEMBER 2012

A2



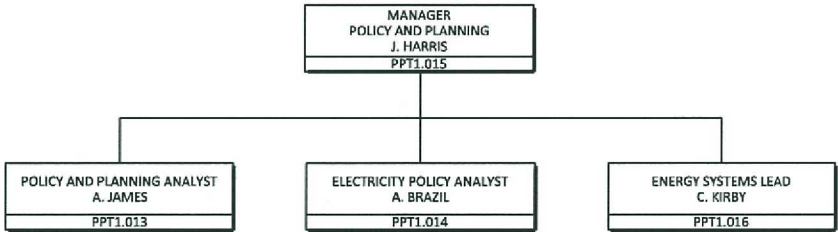


NALCOR ENERGY - LOWER CHURCHILL PROJECT

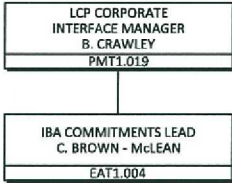
NALCOR PROJECT TEAM
COMMUNICATIONS AND STAKEHOLDER RELATIONS
ORGANIZATION CHART
CHART 7

PROJECT DIRECTOR:

UPDATED: 6 SEPTEMBER 2012



	NALCOR ENERGY - LOWER CHURCHILL PROJECT
	NALCOR PROJECT TEAM POLICY AND PLANNING ORGANIZATION CHART CHART 8
PROJECT DIRECTOR: 	UPDATED: 9 MAY 2012



	NALCOR ENERGY - LOWER CHURCHILL PROJECT
	NALCOR PROJECT TEAM IBA COMMITMENTS
PROJECT DIRECTOR: 	
UPDATED: 20 AUGUST 2012	
A1	