

From: [Williams, Albert](#)
To: [Peach, Bert](#)
Subject: Fw: Expression of Interest, EOI No. LCP-G-002, Lower Churchill Project, EngineeringDesign and Project Support Services
Date: Wednesday, February 25, 2009 2:47:36 PM
Attachments: [SNC Letter and FTP Instructions.pdf](#)

Bert
You will discuss with Montreal (Hassine??)

----- Original Message -----

From: Peach, Bert
To: Williams, Albert; Reid, Elwood; Benjannet, Hassine
Cc: Webber, Linda
Sent: Wed Feb 25 13:06:40 2009
Subject: FW: Expression of Interest, EOI No. LCP-G-002, Lower Churchill Project, EngineeringDesign and Project Support Services

FYI

-----Original Message-----

From: CliffRowe@nalconenergy.com [<mailto:CliffRowe@nalconenergy.com>]
Sent: February 25, 2009 2:15 PM
To: Peach, Bert
Cc: KellyGreene@nalconenergy.com
Subject: Fw: Expression of Interest, EOI No. LCP-G-002, Lower Churchill Project, EngineeringDesign and Project Support Services

Bert, I included a space between your first and last name by mistake.
Kelly please correct your records accordingly.

Regards Cliff Rowe

Clifford C. Rowe
Consultant, Contracts Coordinator,
Nalcor Energy - Lower Churchill Project

Direct Line: (709) 737-7805
Toll Free: 1-888-576-5454 (Canada Only)
Fax: (709) 737-1985
Email: cliffrowe@nalconenergy.com
Website: www.nalconenergy.com

----- Forwarded by Cliff Rowe/NLHydro on 02/25/2009 02:13 PM -----

Cliff
Rowe/NLHydro

To
02/25/2009 02:09 PM Bert. Peach@snclavalin.com
cc
Cliff Rowe/NLHydro@NLHydro, Kelly
Greene/NLHydro@NLHydro

Subject
Expression of Interest, EOI No.
LCP-G-002, Lower Churchill Project,
Engineering Design and Project

Support Services

(See attached file: SNC Letter and FTP Instructions.pdf)

Gentlemen with reference to the above, attached please find our letter inviting your company to submit an Expression of Interest for the Engineering Design and Project Support Services for the Lower Churchill Project.

We have included the instructions to access our FTP Site including your associated passwords. If for any reason you have difficulty accessing this website please contact the undersigned.

All contact regarding this Expression of Interest will be directed to the undersigned. All questions will be responded to officially by a separate bulletin numerically numbered.

Please acknowledge receipt of this email, confirming your receipt of the attached letter and the associated Instructions to access the FTP Site.

Yours truly, Cliff Rowe

Clifford C. Rowe
Consultant, Contracts Coordinator,
Nalcor Energy - Lower Churchill Project

Direct Line: (709) 737-7805
Toll Free: 1-888-576-5454 (Canada Only)
Fax: (709) 737-1985
Email: cliffrowe@nalcorenergy.com
Website: www.nalcorenergy.com



Hydro Place, 500 Columbus Drive.
P.O. Box 12800, St. John's, NL
Canada A1B 0C9
t. 709.737.1833 or 1.888.576.5454
f. 709.737.1985

Doc. No. 09-2/453

February 25, 2009

SNC-Lavalin Inc.
1133 Topsail Road
St. John's, NL A1A 5G2

Attention: Mr. Bert Peach

Expression of Interest (EOI) No. "G-002"
Engineering Design and Project Support Agreement
Lower Churchill Project Development

Dear Mr. Peach:

Nalcor Energy (Nalcor) is developing plans to install (2) new hydroelectric developments, one at Gull Island and the other at Muskrat Falls on the lower Churchill River in Labrador.

On behalf of Nalcor Energy, we have enclosed an Expression of Interest (EOI) for the Engineering Design and Project Support Agreement, for your review and consideration.

While this EOI is related only to the Gull Island Hydroelectric Facility and associated Transmission System, Nalcor Energy at its discretion reserves the right to extend this Agreement with the successful Proponent to include the Muskrat Falls Hydroelectric Facility and associated Transmission System at a later date.

The purpose of this EOI is:

1) to assist Nalcor in defining the project delivery method to be followed for the Lower Churchill Project. To achieve this, Proponents will:

- a) review and respond to the proposed project delivery method identified in the EOI.
- b) identify (if any) Proponent proposed alternative project delivery methods for the Lower Churchill Project.

2) to assist Nalcor in the development of an approved Bidders List to receive the subsequent RFP.

You are hereby invited to submit a response to this EOI for the provision of the services related to the Engineering Design and Project Support Agreement for the Lower Churchill Project.

The Proponent's Expression of Interest Response should follow the documents listed below and the Instructions to Proponents which are attached:

Instructions to Proponents

Engineering Design and Project Support Agreement Schedule

Scope of Work and Technical Attachments

Corporate Organization, Data and Financial Statement

Health, Safety and Environment Questionnaire

Health, Safety and Environment Requirements

Quality Management Questionnaire

Quality Requirements

Information Questionnaire

Execution Proposal

Key Personnel

EOI documents will be made available to Proponent electronically through a file transfer protocol (FTP) site. It is the Proponent's responsibility to access the FTP site and download all associated documents. The FTP site can be accessed through a web browser at the following address; ftp://142.163.56.233: 10421, in accordance with these instructions. Your user name and password for access to this site are as follows:

Username: berpeaix

Password: 32392580

Nalcor, for the purposes of this EOI and as described in the Scope of Work and Technical Attachments, has divided the Scope of Work into four (4) sections which include for the provision of engineering-specific services for the Lower Churchill Project by discrete physical project components and for the Provision of Support Personnel as follows:

Scope of Work A: Engineering-specific services for Gull Island Hydroelectric Development

Scope of Work B: Engineering-specific services for High Voltage Direct Current Transmission System Specialties

Scope of Work C: Engineering-specific services for High Voltage Overhead Transmission Lines (ac and dc)

Scope of Work D: Provision of Support Personnel to bolster Company led Integrated Project Team

This breakdown is a result of our preliminary understanding of the market place and an appetite of potential consultants / contractors to complete specific scopes of work based upon their individual areas of expertise. Recent discussions with engineering contractors confirm our

understanding of the market place; however it also became clear that the engineering contractor community may want to form Joint Ventures or Partnerships to:

- 1) take on the entire Scope of Work for the Engineering Design and Project Support Agreement for the Lower Churchill Project or
- 2) propose an alternative method to execute the work. One result of this EOI is the potential formation of those joint ventures and or partnerships. Upon review of the responses to this EOI, including any alternatives proposed, Nalcor may modify the Scope of Work breakdown prior to the issuance of any subsequent Request for Proposal.

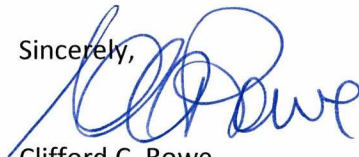
Sealed Responses to the Expression of Interest must be received at the Submission Address defined in the Instructions to Proponents attached hereto, on or before 15:00 hours local St. John's, Newfoundland and Labrador time on April 7, 2009. EOI responses received after the deadline for receipt, as noted above, will not be considered.

Nalcor Energy is not liable for any expenses incurred by Proponent in the preparation or submittal of its Expression of Interest Response including those incurred as a result of discussions and / or clarifications.

If you have any question as to the meaning or interpretation of any documents submitted herewith, please request additional information in writing either by email or by fax to the undersigned at the above address (fax: 709-737-1985) with reference noted as Lower Churchill Project, "**Expression of Interest**" EOI No. G-002 "**Engineering Design and Project Support Agreement**".

Nalcor will provide a written reply to all Proponent(s) as soon as possible.

Sincerely,



Clifford C. Rowe
Contracts Coordinator

Attachments:

Instructions to Access LCP FTP Site
Instructions to Proponents
Engineering Design and Project Support Agreement Schedule
Scope of Work and Technical Attachments
Corporate Organization, Data and Financial Statement
Health, Safety and Environment Questionnaire
Health, Safety and Environment Requirements
Quality Management Questionnaire
Quality Requirements
Information Questionnaire
Execution Proposal
Key Personnel

Nalcor Energy – Lower Churchill Project

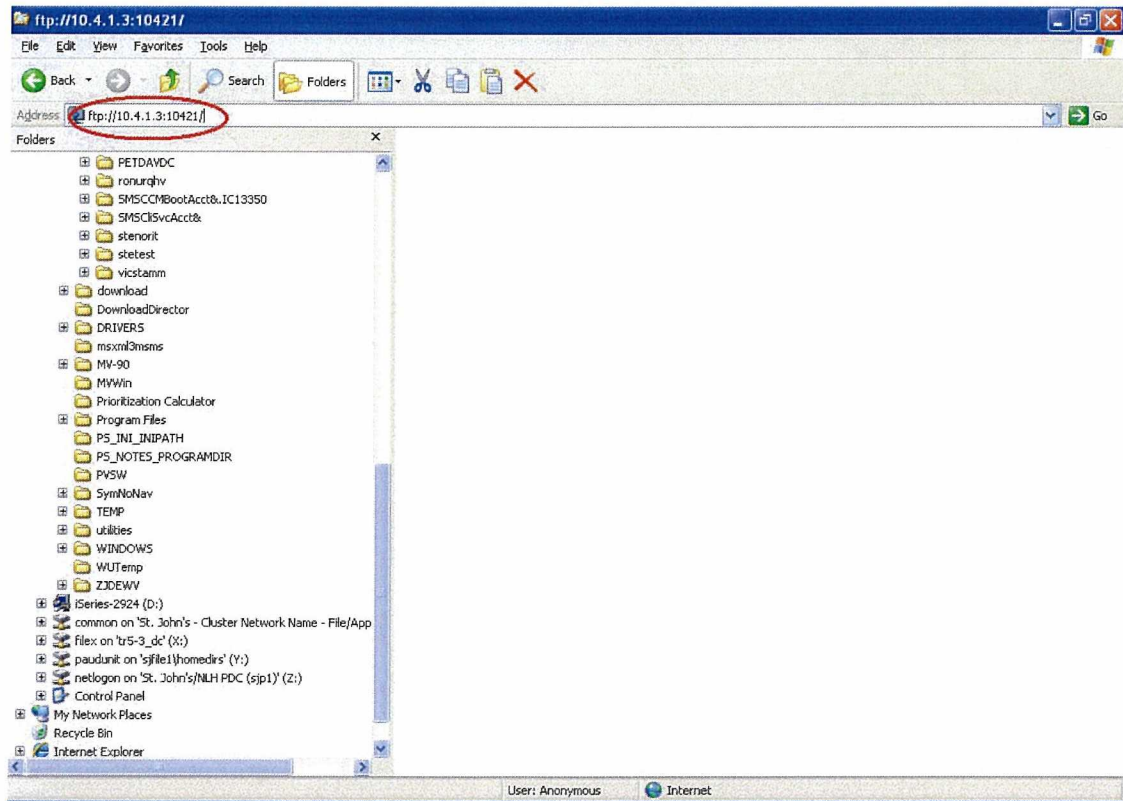
Instructions for Accessing Lower Churchill Project / Document Control – FTP Site

The Lower Churchill Project (LCP) Document Control FTP site has been created to streamline the transfer of reports and data between Nalcor Energy and external resource contractors.

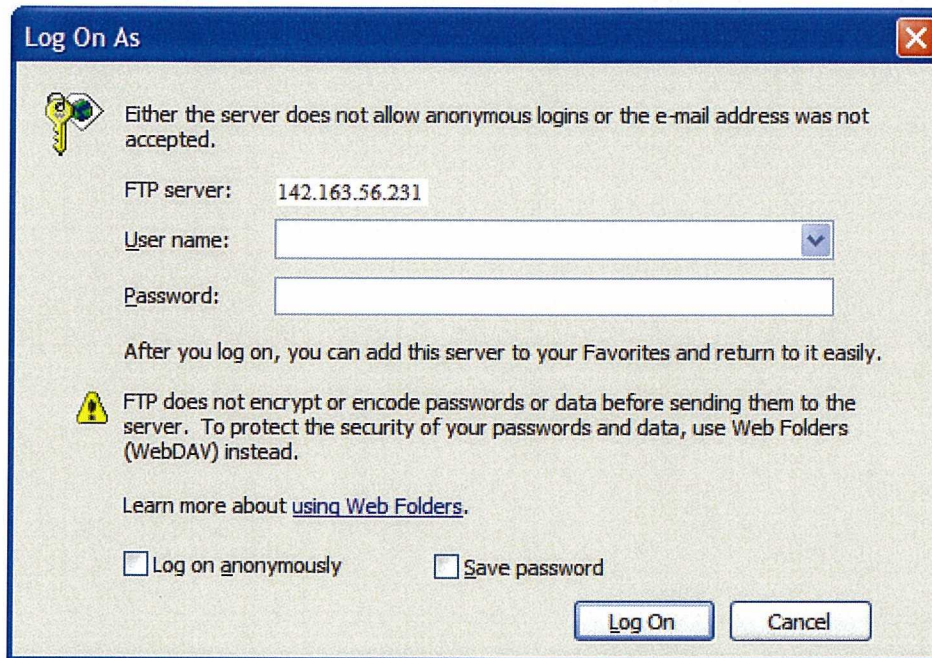
System requirements: Connection to the FTP site has only been tested using Windows XP Service Pack 2. Though not tested, other operating systems and web browsers should be able to connect.


To connect to the LCP Document Control FTP site:

1. Start Windows Explorer. This can be started by right-clicking on the Start button and selecting Explore or by click Start – All Programs (or Programs) – Accessories – Windows Explorer.
2. In the address bar file type: ftp://142.163.56.233:10421

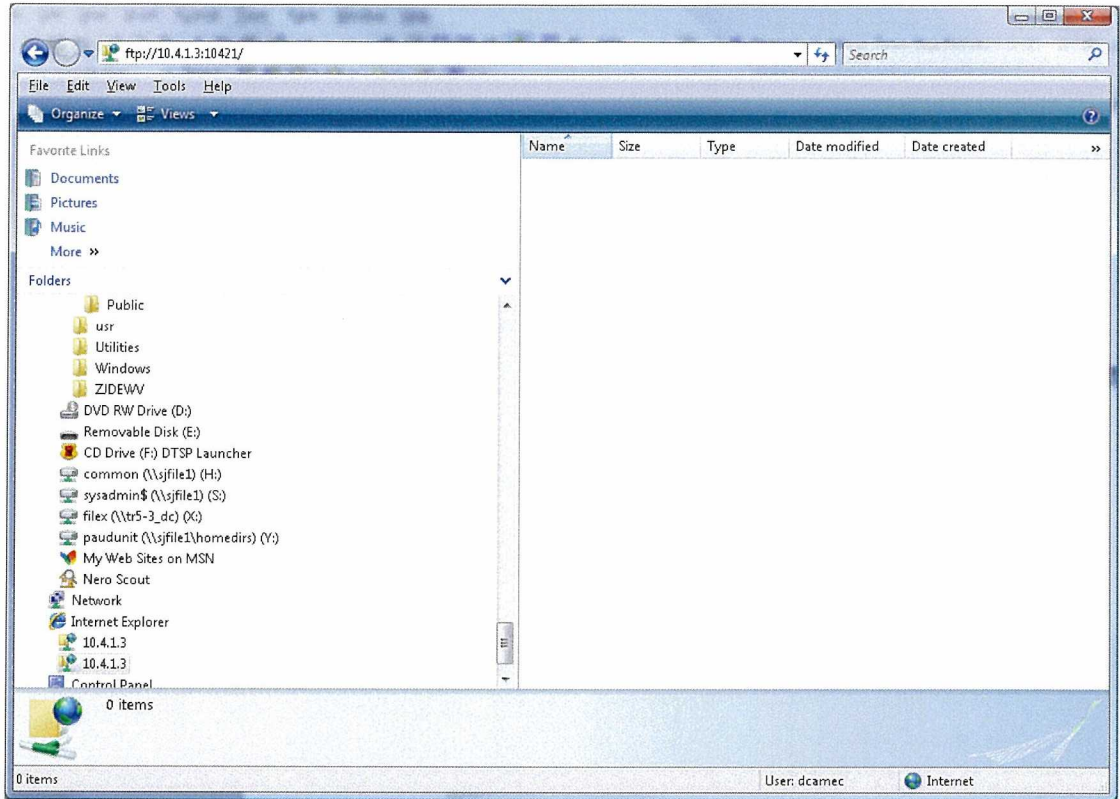


3. Hit Enter and you will be prompted for your logon credentials:



4. Enter your user ID and password – Click . Note: your user ID and password will be supplied to you by the Contracts Administrator.

5. The Lower Churchill Project Document Control folder structure (similar to below) will be presented:



6. You can copy files to and from this area by dragging and dropping.
7. You can save the LCP Document Control site in your favorites for future reference.
8. When you are finish, close Windows Explorer.
9. If you experience problems contact:

Lower Churchill Project Information Technology Department
Ph: (709) 737-4259
Cell: (709) 728-2616

Or you may e-mail: lcpdcc@nalcoreenergy.ca