



Hydro Place, 500 Columbus Drive,
P.O. Box 12800, St. John's, NL
Canada A1B 0C9
t. 709.737.1833 or 1.888.576.5454
f. 709.737.1985

Rec. No: 10-6/2421

July 9, 2010

SNC-Lavalin Inc.
1133 Topsail Road
Mount Pearl, NL A1N 5G2

Attention: Albert Williams, P. Eng.
Senior Vice President

**Subject: REQUEST FOR PROPOSAL (RFP) No. LC-G-002
ENGINEERING, PROCUREMENT AND CONSTRUCTION MANAGEMENT (EPCM)
SERVICES**

Dear Mr. Williams:

Nalcor Energy, herein referred to as Company, is developing plans to install (2) new hydroelectric facilities, one at Gull Island and the other at Muskrat Falls on the Churchill River in Labrador.

You are hereby invited to submit a Proposal for the provision of Engineering, Procurement and Construction Management (EPCM) Services for the Project as detailed in the following documents:

Request for Proposal (RFP)

Part 1 – General Information and Instructions to Proponents

Part 2 - Agreement (including Exhibits 1 – 11)

These documents will be made available to Proponent electronically through a password protected repository. It is the Proponent's responsibility to access the site and download all associated documents. The access directions are attached hereto. Your password and user ID to access this site is as follows:

User ID: albwilex

Password: b03b72ce

Mr. Williams
SNC-Lavalin Inc.
July 9, 2010

Please advise, before 14 July 2010, that you have received the RFP. In addition, please advise, before 23 July 2010, whether or not you will submit a Proposal for this work using the Form of Acknowledgement contained in Part 1, Section 0.2 Instructions to Proponents, Attachment 1.

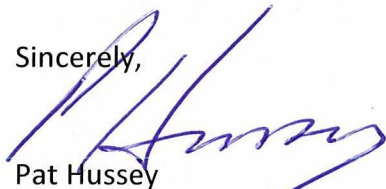
Proponent must deliver, via hand delivery or courier, one original and two copies of its Proposal not later than 15:00 hours local St. John's, Newfoundland time on 26 August 2010 to the submission address specified in Part 1, Section 0.1.10 of the RFP. Proponent must ensure that the Proposal arrives before the closing time specified.

The submitted Proposal shall remain valid for a period of one hundred and eighty (180) days after the closing time and date.

Company is not liable for any expenses incurred by Proponent in the preparation or submittal of its Proposal including those incurred as a result of discussions and / or negotiations.

If you have any question as to the meaning or interpretation of any documents submitted herewith, please request additional information in writing either by email or by fax to the undersigned with reference noted as RFP No. LC-G-002 EPCM Services. Company will provide a written reply to all Proponent(s) as soon as possible.

Sincerely,



Pat Hussey

Supply Chain Lead

pathussey@nalcenergy.com

Fax (709) 737-1985

Attachments:

Instructions to Access Electronic Site

Nalcor Energy – Lower Churchill Project

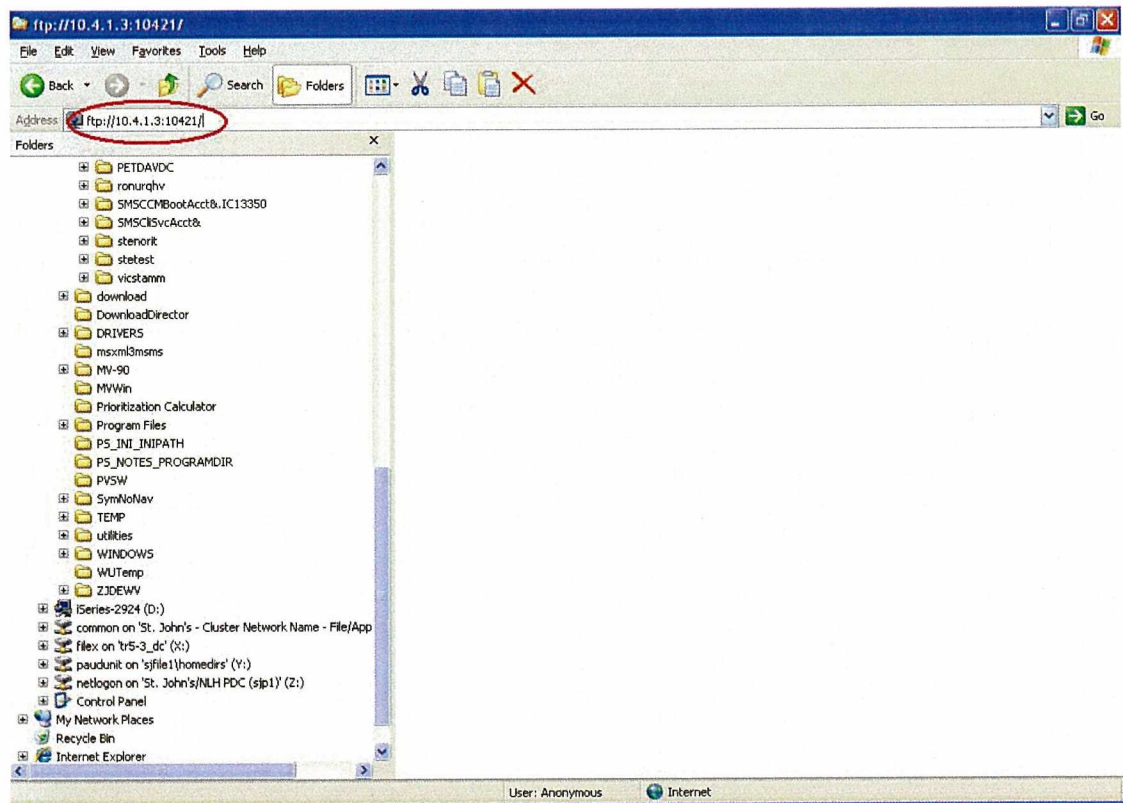
Instructions for Accessing Lower Churchill Project / Document Control – FTP Site

The Lower Churchill Project (LCP) Document Control FTP site has been created to streamline the transfer of reports and data between Nalcor Energy and external resource contractors.

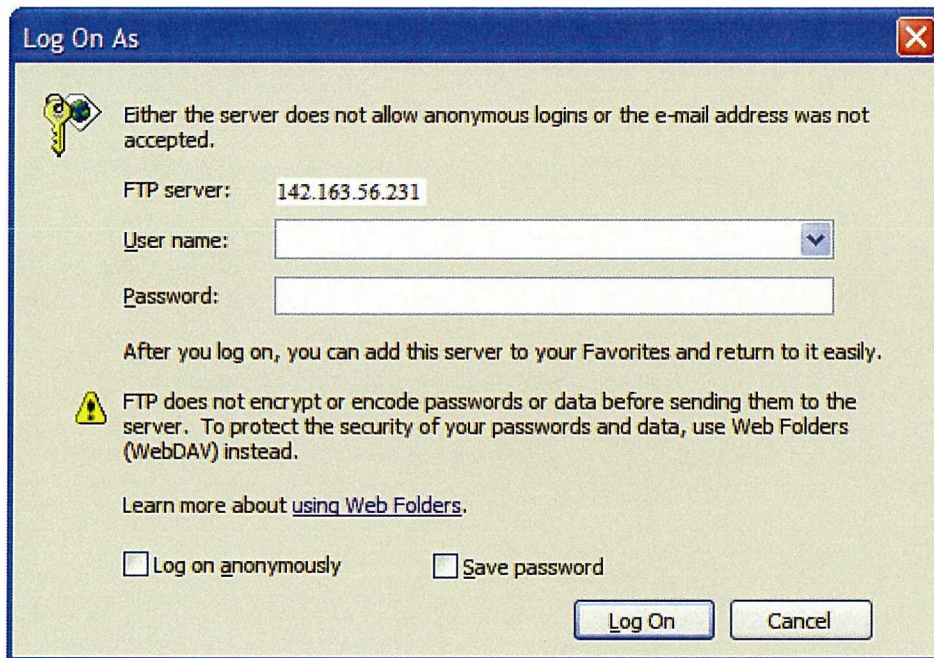
System requirements: Connection to the FTP site has only been tested using Windows XP Service Pack 2. Though not tested, other operating systems and web browsers should be able to connect.

To connect to the LCP Document Control FTP site:

1. Start Windows Explorer. This can be started by right-clicking on the Start button and selecting Explore or by click Start – All Programs (or Programs) – Accessories – Windows Explorer.
2. In the address bar filed type: <ftp://142.163.56.233:10421>

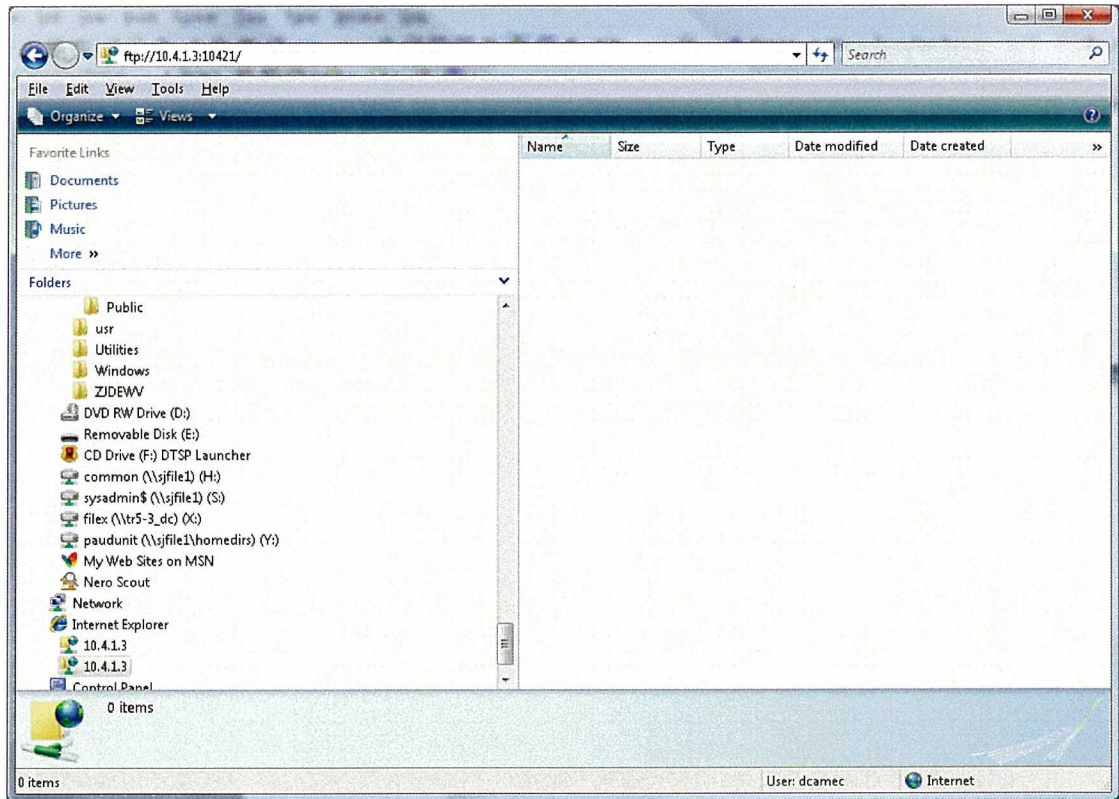


3. Hit Enter and you will be prompted for your logon credentials:



4. Enter your user ID and password – Click . Note: your user ID and password will be supplied to you by the Contracts Administrator.

5. The Lower Churchill Project Document Control folder structure (similar to below) will be presented:



6. You can copy files to and from this area by dragging and dropping.
7. You can save the LCP Document Control site in your favorites for future reference.
8. When you are finish, close Windows Explorer.
9. If you experience problems contact:

Lower Churchill Project Information Technology Department
Ph: (709) 737-4259
Cell: (709) 728-2616

Or you may e-mail: lcpdcc@nalcoreenergy.com

Troubleshooting:**Question: I am not getting a username / password box.****Answer:**

- 1.) If you are experiencing problems connecting to the LCPDCC FTP Site and are not getting prompted with a username / password problem, it might be due to security restrictions with your company's infrastructure. Typically it has been found that in order to correct a connectivity issue, your IT Department will have to allow ftp traffic to flow on the following ports.

10421
10130
10131
10132
10133
10134
10135

Typically when the traffic has been allowed over these ports it has resolved the connectivity issues.

- 2.) Ensure that you have typed the FTP server address correctly.

Question: I am getting a username / password box but am unable to connect**Answer:**

- 1.) Verify that you are typing in the username and password that was provided to you correctly.
- 2.) If you are typing the username and password correctly, then you may want to contact the Nalcor Energy – Newfoundland and Labrador Hydro Information Systems Helpdesk – or – email LCPDCC@nalcorenergy.com and advise them that you are trying to log into the LCPDCC FTP site and aren't able to connect with the username & password that was provided.