



March 18th, 2016

AH-Letter-PM-132

Muskrat Falls Corporation
Lower Churchill Project Muskrat Falls Corporation
350 Torbay Road Plaza, Suite No. 2
St. John's, NL, A1A 4E1

Attention: Scott O'Brien – Project Manager, Muskrat Falls Generation

Subject: 1) CH0032: Supply and Install Powerhouse and Spillway Hydro-Mechanical Equipment – Contractor's Spillway Installation Plan

References: 1) Company's letter - LTR-CH0032001-0286 – Confirmation of Performance Default
2) AH-Letter-PM-121 – Reply to Company's Letter CH0032001-0260
3) Company's letter - LTR-CH0032001-0260 – Performance Default Notice

Dear Mr. O'Brien,

In response to Company's letter LTR-CH0032001-0286 and as a follow-up to our discussions held in St-Johns during the week of March 7, 2016 where a preliminary plan was presented to Company, Contractor submits the following information, within the ten (10) business days specified in your letter LTR-CH0032001-0260.

Company will find attached an updated schedule, based on a plan to achieve June 15, 2016 work required for river diversion and commitment letters from Canmec and CRT. While Contractor has no obligation to provide such letters, only to confirm our commitment to the acceleration plan, Contractor has obtained letters from our two key subcontractors as further evidence of our good faith efforts and diligence in pursuing the target date.

This revised schedule follows a detailed review of the scope of work with CRT. A change order has been given to CRT to accelerate some concreting activities. This additional acceleration effort is due to many events out of Contractor's control such as late access to site, additional repair work, weather conditions, etc., and aimed at maintaining the June 15, 2016 acceleration request from Company. Contractor expects full compensation of all costs related to this additional effort, estimated to 4M\$.



Yours Truly,

A handwritten signature in blue ink, appearing to read "Bill Mavromatis".

Bill Mavromatis
Project Manager
Andritz Hydro Canada Inc.

CC: Frank Gillespie, LCP Deputy Company Representative/Area Manager
Bruce Drover, LCP Package Leader - Hydro Mechanical Equipment
Line Tremblay, LCP Senior Contract Administrator
Nicole Hu – AH Commercial Manager
Jean Rochon – AH Large Hydro Manager Operations
Daniel Carrier – AH Vice President
Tim Ryan – AH President
Veronica O'Brien – AH Regional General Counsel - North America

ATTACHMENTS: 1) Spillway Installation Schedule, Mar-18-2016 Update, pdf file (31pages),
.xer electronic file submitted via ACONEX
2) CRT Letter - Commitment to achieve river diversion on June 15, 2016
3) CANMEC Letter – Commitment to achieve river diversion on June 15, 2016



MUSKRAT FALLS

18-Mar-16 08:48

CH-0032 GATES

MASTER CONSTRUCTION SCHEDULE UPDATE - 18-MAR-16

Activity ID	Activity Name	Activity % Complete	At Completion Duration	Start	Finish	2016															
						Nov	Dec	Jan	Feb	Mar	Apr	May	Jun	Jul	Aug	Sep	Oct	Nov	Dec		
Muskrat Falls Gates - 18-Mar-16 - Sent to LCP																					
Project Management																					
Company's Other Contractor as advised by client																					
A0525	Work by company's other contractors - Spillway Downstream (I1B)	100%	0.0d	31-Aug-15 A	31-Aug-15 A																
A34100	Work by company's other contractors - Laydown area ready for mobilization	100%	0.0d	01-Sep-15 A	01-Sep-15 A																
A0520	Work by company's other contractors - Spillway Upstream (I1A)	0%	0.0d	13-Mar-16	13-Mar-16																
A32630	Work by company's other contractors - for Draft Tube structure (I9)	0%	147.0d	13-Mar-16	06-Aug-16																
A32635	Work by company's other contractors - for Draft Tube structure (I10)	0%	206.0d	13-Mar-16	04-Oct-16																
A32640	Work by company's other contractors - for Draft Tube structure (I11)	0%	248.0d	13-Mar-16	15-Nov-16																
A32645	Work by company's other contractors - for Intake structure unit 2 (I13)	0%	487.0d	13-Mar-16	12-Jul-17																
A32650	Work by company's other contractors - for Intake structure unit 4 (I15)	0%	674.0d	13-Mar-16	15-Jan-18																
A0515	Hand over of TRCM railway to Andritz	0%	0.0d		13-Mar-16																
A0530	Work by company's other contractors - Gantry Crane structure and rails (I7)	0%	33.0d	13-Mar-16	14-Apr-16																
A0545	Work by company's other contractors - for Draft Tube structure (I8)	0%	105.0d	13-Mar-16	25-Jun-16																
A0550	Work by company's other contractors - for Intake structure unit 1 (I12)	0%	397.0d	13-Mar-16	13-Apr-17																
A0555	Work by company's other contractors - for Intake structure unit 3 (I14)	0%	577.0d	13-Mar-16	10-Oct-17																
A0540	Work by company's other contractors - Roof access available to lower the crane	0%	7.0d	15-Apr-16	21-Apr-16																
A0535	Lower the Draft Tube Gantry Crane	0%	4.0d	22-Apr-16	25-Apr-16																
A0560	Work by company's other contractors - water diversion	0%	179.1d	28-Oct-16	25-Apr-17																
A0575	Work by company's other contractors for cofferdams#3 and rock plug removed in order to fill the tailrace with water	0%	17.9d	27-Mar-17	13-Apr-17																
A0570	Work by company's other contractors after commissioning of draft tube (M22)	0%	567.0d	03-Jun-17	21-Dec-18																
A0565	Work by company's other contractors - for the Rollway Construction Bay 1	0%	163.0d	17-Jun-17	26-Nov-17																
A34090	Work by company's other contractors - after roller gates wet test Bay 3 & 5	0%	191.0d	06-Aug-17	12-Feb-18																
A34095	Work by company's other contractors - after roller gates wet test Bay 2 & 4	0%	303.3d	25-Sep-17	25-Jul-18																
A0585	Work by company's other contractors - for the Rollway Construction Bay 3 & 5	0%	112.0d	17-Feb-18	08-Jun-18																
A0580	Work by company's other contractors - for the Rollway Construction Bay 2 & 4	0%	132.0d	25-Jul-18	04-Dec-18																
A32660	Work by others after commissioning of Intake (M23)	0%	259.0d	12-Sep-18	28-May-19																
Schedule Milestones																					
General																					
A0025	LNTP	100%	0.0d	25-Oct-13 A																	
A0005	M1 - Contract Award (Anticipated Date)	100%	0.0d	08-Nov-13 A																	
A0010	M2 - Substantial Completion of the Work	0%	0.0d		28-May-19																
A0200	Final Completion	0%	0.0d		21-Jun-19																
Spillway																					
Delivery																					
A0035	M3b-Hydro-Mechanical primary embedded parts for South Pier delivered to Site (Figure 1)	100%	0.0d	24-Apr-14 A	03-Sep-14 A																
A0030	M3a-Hydro-Mechanical primary embedded parts required for the Spillway Slab delivered to Site (Figure 1)	100%	0.0d		24-Apr-14 A																
A0040	M3c-Hydro-Mechanical primary embedded parts for Pier 1 delivered to Site (Figure 1)	100%	0.0d		26-May-14 A																
A0045	M3d-Hydro-Mechanical primary embedded parts for Pier 2 delivered to Site (Figure 1)	100%	0.0d		16-Jun-14 A																
A0085	M3e-All remaining Hydro-Mechanical primary embedded parts for Piers 3 & 4 and North Pier delivered to Site (Figure 1)	100%	0.0d		28-Jun-14 A																
A0105	M3g-All Remaining Spillway Primary Embedded Parts - Rollways	100%	0.0d		28-Jun-14 A																
A0100	M3f-All Downstream Stop Log Guide primary Embedded Parts delivered to site (Figure 2)	100%	0.0d		03-Sep-14 A																
Installation																					
A0120	I1B - Downstream of spillway ready for start of Hydromechanical Works (Dates for reference ONLY)	100%	0.0d	01-Sep-15 A																	
A0020	I1A - Upstream of spillway ready for start of Hydromechanical Works (Dates for reference ONLY)	0%	0.0d	01-Nov-15 A																	
A0050	M4 - MINIMUM-Spillway all hydro-mechanical and elec.systems commissioned ready for river diversion	0%	0.0d		15-Jun-16*																
A0110	M4-COMPLETE-Spillway all hydro-mec&elec.sys commissioned ready for riv diver - Does not reflect ongoing delays	0%	0.0d		28-Oct-16																
Engineering																					
Basic and Detail Design																					
Spillway																					
Basic Design and Primary Anchors																					
A1045	Engineering - basic design and primary anchors	100%	54.0d	25-Oct-13 A	09-Jan-14 A																
A1005	Approval of Basic Design and primary anchors	100%	96.0d	15-Nov-13 A	31-Mar-14 A																
Upstream Permanent Stoplogs S1																					
A1150	Engineering of guides for Upstream Permanent Stoplogs S1	100%	60.0d	01-Jan-14 A	25-Mar-14 A																
A1250	Engineering of Upstream Permanent Stoplogs S1	100%	124.0d	28-Feb-14 A	21-Aug-14 A																
A1170	Approval of guides for Upstream Permanent Stoplogs S1	100%	81.0d	25-Mar-14 A	16-Jul-14 A																
A1255	Approval of Upstream Permanent Stoplogs S1	100%	106.0d	18-Jul-14 A	15-Dec-14 A																

■ WBS Summary
 ● Critical Remaining Work
○ Level of Effort
 ◆ Milestone
● Actual Work
○ Remaining

Activity ID	Activity Name	Activity % Complete	At Completion Duration	Start	Finish	2016											
						Nov	Dec	Jan	Feb	Mar	Apr	May	Jun	Jul	Aug	Sep	Oct
Upstream Temporary Stoplogs S2 & S3																	
A1050	Engineering of guides for Upstream Temporary Stoplogs S2/S3	100%	43.0d	20-Jan-14 A	20-Mar-14 A												
A1475	Approval of guides for Temporary Stoplogs S2/S3	100%	82.0d	21-Mar-14 A	15-Jul-14 A												
A1480	Engineering of Temporary Stoplogs S2/S3	100%	109.0d	21-Mar-14 A	21-Aug-14 A												
A1485	Approval of Temporary Stoplogs S2/S3	100%	91.0d	08-Aug-14 A	15-Dec-14 A												
Downstream Stoplogs S4																	
A1155	Engineering of guides for Downstream Stoplogs S4	100%	94.0d	20-Jan-14 A	30-May-14 A												
A1260	Engineering of Stoplogs S4	100%	118.0d	10-Mar-14 A	21-Aug-14 A												
A1175	Approval of guides for Downstream Stoplogs S4	100%	117.0d	14-Apr-14 A	24-Sep-14 A												
A1440	Approval of Stoplogs S4	100%	84.0d	01-Sep-14 A	26-Dec-14 A												
Spillway Roller Gate																	
A1160	Engineering of guides for Spillway Roller Gate	100%	43.0d	20-Jan-14 A	20-Mar-14 A												
A1215	Approval of guides for Spillway Roller Gate	100%	82.0d	21-Mar-14 A	15-Jul-14 A												
A1040	Engineering of the spillway gates	100%	133.0d	21-Mar-14 A	24-Sep-14 A												
A1055	SRG Skin plate thickness settlement	100%	94.0d	26-Sep-14 A	05-Feb-15 A												
A1080	Implementation of changes	100%	26.0d	06-Feb-15 A	14-Mar-15 A												
A1070	Approval of Gate Design	100%	18.0d	15-Mar-15 A	09-Apr-15 A												
Spillway Towers, Bridge Structure & Hoist House																	
A1460	Engineering of spillway tower, bridge structure & hoist tower anchors	100%	249.0d	14-Feb-14 A	29-Jan-15 A												
A2125	Engineering of spillway tower, bridge structure & hoist house concept	100%	230.0d	07-Apr-14 A	23-Feb-15 A												
A2200	Approval of spillway tower, bridge structure & hoist house anchors	100%	247.0d	01-Aug-14 A	14-Jul-15 A												
A2130	Internal Approval of spillway tower, bridge structure & hoist house design	100%	135.0d	06-Jan-15 A	14-Jul-15 A												
Spillway Hoist																	
A2100	Engineering of spillway hoist	100%	74.0d	17-Feb-14 A	30-May-14 A												
A2105	Approval of spillway hoist design	100%	170.0d	02-May-14 A	26-Dec-14 A												
TRCM																	
A1075	Design concept for TRCM	100%	171.0d	01-Nov-13 A	30-Jun-14 A												
A1125	Internal approval of TRCM Design	100%	180.0d	21-Feb-14 A	31-Oct-14 A												
Spillway Rollway																	
A2175	Engineering of spillway rollway	100%	11.0d	10-Mar-14 A	25-Mar-14 A												
A2180	Approval of spillway rollway design	100%	83.0d	20-Mar-14 A	15-Jul-14 A												
Power & Electrical																	
A2225	Engineering of spillway hoist tower-electrical equipment-Andritz Hemi	100%	518.0d	28-Jan-14 A	22-Jan-16 A												
A2275	Engineering of spillway electrical building - Subcontractor Technical Procurement Specification	70%	483.0d	15-May-14 A	21-Mar-16												
A2250	Engineering of spillway electrical building-electrical equipment-Andritz Hemi	100%	444.0d	26-May-14 A	05-Feb-16 A												
A2150	Engineering of spillway embedded guide heater system	100%	154.0d	26-May-14 A	26-Dec-14 A												
A2155	Approval of spillway embedded guide heaters design	60%	316.0d	29-Dec-14 A	14-Mar-16												
A2255	Approval of spillway electrical building-electrical equipment-Andritz Hemi	60%	206.0d	19-Jun-15 A	01-Apr-16												
A2230	Approval of spillway hoist tower-electrical equipment-Andritz Hemi	60%	199.0d	30-Jun-15 A	01-Apr-16												
Sourcing																	
PO Placement																	
Spillway																	
Primary Anchors																	
A1200	Place PO Primary anchors for spillway	100%	12.0d	28-Nov-13 A	16-Dec-13 A												
2ND Stage Embedded Parts																	
Upstream Permanent Stoplog Guides S1																	
A1500	Place PO Guides for Upstream Permanent stoplogs S1	100%	99.0d	26-Mar-14 A	12-Aug-14 A												
Upstream Temporary Stoplog Guides S2 / S3																	
A1220	Place PO Guides for Upstream Temporary stoplogs S2 & S3	100%	88.0d	11-Apr-14 A	12-Aug-14 A												
Downstream Stoplog Guides S4																	
A1225	Place PO Guides for Downstream Stoplogs S4	100%	72.0d	02-May-14 A	12-Aug-14 A												
Spillway Roller Gate Guides																	
A1230	Place PO Guides for Spillway Roller Gate	100%	102.0d	21-Mar-14 A	12-Aug-14 A												
Upstream Permanent Stoplogs S1																	
A1445	Place PO Upstream Permanent stoplogs S1	100%	77.0d	01-May-14 A	18-Aug-14 A												
Upstream Temporary Stoplogs S2 & S3																	
A1505	Place PO Upstream Temporary stoplogs S2 & S3	100%	76.0d	02-May-14 A	18-Aug-14 A												
Downstream Stoplogs S4																	
A1450	Place PO stoplogs S4	100%	76.0d	02-May-14 A	18-Aug-14 A												
Spillway Roller Gate																	
A1300	Place PO for Spillway Roller Gates	100%	76.0d	02-May-14 A	18-Aug-14 A												
Spillway Towers, Bridge Structure & Hoist House																	
A2205	Place PO spillway tower, bridge structure & hoist house anchors	100%	107.0d	07-Apr-14 A	03-Sep-14 A												
A2135	Place PO spillway tower, bridge structure & hoist house	100%	89.0d	01-May-14 A	03-Sep-14 A												
Spillway Hoist																	
A2110	Place PO spillway hoist	100%	88.0d	02-May-14 A	03-Sep-14 A												
TRCM																	
A1295	Place PO TRCM	100%	1.0d	06-Mar-14 A	07-Mar-14 A												
Modifications																	
A2185	Place PO spillway rollway modifications	100%	73.0d	23-May-14 A	03-Sep-14 A												
Power & Electrical																	
A2285	Place PO spillway electrical building - Subcontract (structural, architectural and mechanical auxiliaries)	100%	133.0d	06-Jun-14 A	10-Dec-14 A												

Activity ID	Activity Name	Activity % Complete	At Completion Duration	Start	Finish	2016											
						Nov	Dec	Jan	Feb	Mar	Apr	May	Jun	Jul	Aug	Sep	Oct
A32365	Design approval - TRCM	98%	429.0d	01-Sep-14 A	21-Apr-16	[Gantt bar from Sep-14 to Apr-16]											
A32345	Manufacturing Kick-off - TRCM	100%	1.0d	07-Oct-14 A	07-Oct-14 A	[Green dot at Oct-14]											
A32385	Material procurement - TRCM	100%	148.0d	22-Dec-14 A	16-Jul-15 A	[Gantt bar from Dec-14 to Jul-15]											
A32375	Approval PE - TRCM	97%	314.0d	08-Feb-15 A	21-Apr-16	[Gantt bar from Feb-15 to Apr-16]											
Manufacturing of TRCM			563.0d	07-Mar-14 A	03-May-16	[Gantt bar from Mar-14 to May-16]											
A32335	GA drawing - TRCM	100%	41.0d	07-Mar-14 A	05-May-14 A	[Green dot at May-14]											
A32395	Fabrication - TRCM	100%	144.0d	14-Jan-15 A	04-Aug-15 A	[Gantt bar from Jan-15 to Aug-15]											
A32405	Machining - TRCM	100%	88.0d	06-Apr-15 A	06-Aug-15 A	[Gantt bar from Apr-15 to Aug-15]											
A32415	Blasting & painting - TRCM	100%	85.0d	14-Apr-15 A	11-Aug-15 A	[Gantt bar from Apr-15 to Aug-15]											
A32425	Mechanical assembly in the Workshop - TRCM	100%	67.0d	17-Jun-15 A	18-Sep-15 A	[Gantt bar from Jun-15 to Sep-15]											
A32435	Hydraulic assembly in the Workshop - TRCM	100%	48.0d	14-Jul-15 A	18-Sep-15 A	[Gantt bar from Jul-15 to Sep-15]											
A32445	Electrical assembly in the workshop - TRCM	100%	64.0d	15-Jul-15 A	13-Oct-15 A	[Gantt bar from Jul-15 to Oct-15]											
A32455	Internal testing (pressure, functions, tightness) - TRCM	100%	17.0d	18-Sep-15 A	13-Oct-15 A	[Gantt bar from Sep-15 to Oct-15]											
A32465	Workshop testing (FAT) - TRCM	100%	6.0d	26-Oct-15 A	03-Nov-15 A	[Gantt bar from Oct-15 to Nov-15]											
A32475	Dismantling and packaging - TRCM	5%	125.0d	03-Nov-15 A	25-Apr-16	[Gantt bar from Nov-15 to Apr-16]											
A32485	QA/Shipping release - TRCM	0%	5.0d	26-Apr-16	02-May-16	[Green dot at Apr-16]											
A32595	Shop Storage - TRCM	0%	1.0d	03-May-16	03-May-16	[Green dot at May-16]											
Modifications			70.0d	10-Mar-15 A	16-Jun-15 A	[Gantt bar from Mar-15 to Jun-15]											
A25985	Spillway rollway modification	100%	70.0d	10-Mar-15 A	16-Jun-15 A	[Green dot at Jun-15]											
Power & Electrical			341.0d	02-Feb-15 A	23-May-16	[Gantt bar from Feb-15 to May-16]											
A33190	Pre-Manufacturing spillway electrical building-electrical equipment-Andritz Hemi	60%	320.0d	02-Feb-15 A	22-Apr-16	[Gantt bar from Feb-15 to Apr-16]											
A2265	Manufacturing spillway electrical building-electrical equipment-Andritz Hemi	40%	324.0d	25-Feb-15 A	23-May-16	[Gantt bar from Feb-15 to May-16]											
A2290	Manufacturing spillway electrical building - Subcontract (structural and architectural and mechanical auxiliaries)	75%	279.0d	10-Mar-15 A	01-Apr-16	[Gantt bar from Mar-15 to Apr-16]											
A33195	Pre-Manufacturing spillway hoist tower-electrical equipment-Andritz Hemi	100%	37.0d	25-Aug-15 A	15-Oct-15 A	[Gantt bar from Aug-15 to Oct-15]											
A2240	Manufacturing spillway hoist tower-electrical equipment-Andritz Hemi	20%	157.0d	15-Oct-15 A	20-May-16	[Gantt bar from Oct-15 to May-16]											
A33185	Pre-Manufacturing spillway embedded guide heater system	0%	0.0d	15-Mar-16	15-Mar-16	[Green dot at Mar-16]											
A2165	Manufacturing spillway embedded guide heater system	0%	31.0d	15-Mar-16	26-Apr-16	[Gantt bar from Mar-16 to Apr-16]											
25kV Fused Load Break Switch			274.0d	25-Feb-15 A	14-Mar-16	[Gantt bar from Feb-15 to Mar-16]											
A35750	25kV Fused Load Break Switch Manufacturing	100%	242.0d	25-Feb-15 A	29-Jan-16 A	[Green dot at Jan-16]											
A35755	25kV Fused Load Break Switch FAT	100%	1.0d	03-Feb-16 A	04-Feb-16 A	[Green dot at Feb-16]											
A35760	25kV Fused Load Break Switch QA/Shipping release	100%	10.0d	05-Feb-16 A	19-Feb-16 A	[Green dot at Feb-16]											
A35875	25kV Fused Load Break Switch Shop Storage	0%	1.0d	14-Mar-16	14-Mar-16	[Green dot at Mar-16]											
Spillway building - Switchgear			201.0d	15-Jun-15 A	21-Mar-16	[Gantt bar from Jun-15 to Mar-16]											
A35765	Spillway building - Switchgear Manufacturing	100%	174.0d	15-Jun-15 A	12-Feb-16 A	[Green dot at Feb-16]											
A35770	Spillway building - Switchgear FAT	100%	4.0d	15-Feb-16 A	19-Feb-16 A	[Green dot at Feb-16]											
A35775	Spillway building - Switchgear QA/Shipping release	0%	5.0d	14-Mar-16	18-Mar-16	[Green dot at Mar-16]											
A35890	Spillway building - Switchgear Shop Storage	0%	1.0d	21-Mar-16	21-Mar-16	[Green dot at Mar-16]											
25/0.6 kV Dry Type Transformers			245.0d	07-Apr-15 A	14-Mar-16	[Gantt bar from Apr-15 to Mar-16]											
A35735	25/0.6 kV Dry Type Transformers Manufacturing	100%	178.0d	07-Apr-15 A	11-Dec-15 A	[Green dot at Dec-15]											
A35740	25/0.6 kV Dry Type Transformers FAT	100%	2.0d	14-Dec-15 A	16-Dec-15 A	[Green dot at Dec-15]											
A35745	25/0.6 kV Dry Type Transformers QA/Shipping release	100%	2.0d	17-Dec-15 A	21-Dec-15 A	[Green dot at Dec-15]											
A35845	25/0.6 kV Dry Type Transformers Shop Storage	0%	60.0d	22-Dec-15 A	14-Mar-16	[Gantt bar from Dec-15 to Mar-16]											
Busway			196.0d	15-Jun-15 A	14-Mar-16	[Gantt bar from Jun-15 to Mar-16]											
A35780	Busway Manufacturing	100%	161.0d	15-Jun-15 A	26-Jan-16 A	[Green dot at Jan-16]											
A35785	Busway FAT	100%	0.0d	27-Jan-16 A	27-Jan-16 A	[Green dot at Jan-16]											
A35790	Busway QA/Shipping release	100%	0.0d	28-Jan-16 A	28-Jan-16 A	[Green dot at Jan-16]											
A35975	Busway Shop Storage	0%	33.0d	28-Jan-16 A	14-Mar-16	[Gantt bar from Jan-16 to Mar-16]											
Spillway Building - Electrical Distribution			35.0d	08-Feb-16 A	25-Mar-16	[Gantt bar from Feb-16 to Mar-16]											
A35795	Spillway Building - Electrical Distribution Manufacturing	50%	34.0d	08-Feb-16 A	24-Mar-16	[Gantt bar from Feb-16 to Mar-16]											
A35805	Spillway Building - Electrical Distribution QA/Shipping release	0%	0.0d	25-Mar-16*	25-Mar-16	[Green dot at Mar-16]											
A35990	Spillway Building - Electrical Distribution Shop Storage	0%	1.0d	25-Mar-16*	25-Mar-16	[Green dot at Mar-16]											
Charger and Batteries			146.0d	27-Aug-15 A	17-Mar-16	[Gantt bar from Aug-15 to Mar-16]											
A35810	Charger and Batteries Manufacturing	100%	110.0d	27-Aug-15 A	28-Jan-16 A	[Green dot at Jan-16]											
A35815	Charger and Batteries inspection by AH	0%	2.0d	14-Mar-16	15-Mar-16	[Green dot at Mar-16]											
A35820	Charger and Batteries QA/Shipping release	0%	1.0d	16-Mar-16	16-Mar-16	[Green dot at Mar-16]											
A35995	Charger, Batteries and UPS Shop Storage	0%	1.0d	17-Mar-16	17-Mar-16	[Green dot at Mar-16]											
UPS			101.0d	26-Oct-15 A	15-Mar-16	[Gantt bar from Oct-15 to Mar-16]											
A36055	UPS Manufacturing	100%	84.0d	26-Oct-15 A	19-Feb-16 A	[Green dot at Feb-16]											
A36060	UPS inspection by AH	0%	1.0d	14-Mar-16*	14-Mar-16	[Green dot at Mar-16]											
A36065	UPS QA/Shipping release	0%	0.0d	15-Mar-16	15-Mar-16	[Green dot at Mar-16]											
Fire Alarm System			118.0d	01-Oct-15 A	14-Mar-16	[Gantt bar from Oct-15 to Mar-16]											
A35825	Fire Alarm System Manufacturing	100%	53.0d	01-Oct-15 A	15-Dec-15 A	[Green dot at Dec-15]											
A35835	Fire Alarm System QA/Shipping release	0%	0.0d	14-Mar-16*	14-Mar-16	[Green dot at Mar-16]											
A36000	Fire Alarm System Shop Storage	0%	1.0d	14-Mar-16	14-Mar-16	[Green dot at Mar-16]											
Hoist House - Ventilation and Heating System			40.0d	25-Jan-16 A	18-Mar-16	[Gantt bar from Jan-16 to Mar-16]											
A35840	Hoist House - Ventilation and Heating System Manufacturing	80%	37.0d	25-Jan-16 A	15-Mar-16	[Gantt bar from Jan-16 to Mar-16]											
A35850	Hoist House - Ventilation and Heating System QA/Shipping release	0%	2.0d	16-Mar-16	17-Mar-16	[Green dot at Mar-16]											
A36005	Hoist House - Ventilation and Heating System Shop Storage	0%	1.0d	18-Mar-16	18-Mar-16	[Green dot at Mar-16]											
Spillway - Gates - MCC			190.0d	25-Jun-15 A	16-Mar-16	[Gantt bar from Jun-15 to Mar-16]											
A35855	Spillway - Gates - MCC Manufacturing	100%	171.0d	25-Jun-15 A	19-Feb-16 A	[Green dot at Feb-16]											
A35860	Spillway - Gates - MCC FAT	0%	2.0d	14-Mar-16	15-Mar-16	[Green dot at Mar-16]											
A35865	Spillway - Gates - MCC QA/Shipping release	0%	0.0d	16-Mar-16	16-Mar-16	[Green dot at Mar-16]											

Activity ID	Activity Name	Activity % Complete	At Completion Duration	Start	Finish	2016											
						Nov	Dec	Jan	Feb	Mar	Apr	May	Jun	Jul	Aug	Sep	Oct
Downstream Stoplog Guides S4																	
Bay 1																	
A12570	B1 Transport of Downstream Permanent Stoplog Guides S4	100%	5.0d	05-Sep-15 A	10-Sep-15 A												
Bay 2																	
A12655	B2 Transport of Downstream Permanent Stoplog Guides S4	100%	5.0d	05-Sep-15 A	10-Sep-15 A												
Bay 3																	
A12660	B3 Transport of Downstream Permanent Stoplog Guides S4	100%	5.0d	05-Sep-15 A	10-Sep-15 A												
Bay 4																	
A12665	B4 Transport of Downstream Permanent Stoplog Guides S4	100%	5.0d	05-Sep-15 A	10-Sep-15 A												
Bay 5																	
A12670	B5 Transport of Downstream Permanent Stoplog Guides S4	100%	5.0d	05-Sep-15 A	10-Sep-15 A												
Spillway Roller Gate Guides																	
Bay 1																	
A12580	B1 Transport of Spillway Roller Gate Guides	100%	3.0d	30-Oct-15 A	02-Nov-15 A												
Bay 2																	
A12675	B2 Transport of Spillway Roller Gate Guides	100%	3.0d	02-Nov-15 A	05-Nov-15 A												
Bay 3																	
A12680	B3 Transport of Spillway Roller Gate Guides	100%	2.0d	06-Jan-16 A	08-Jan-16 A												
Bay 4																	
A12685	B4 Transport of Spillway Roller Gate Guides	100%	2.0d	14-Jan-16 A	16-Jan-16 A												
Bay 5																	
A12690	B5 Transport of Spillway Roller Gate Guides	100%	2.0d	20-Jan-16 A	22-Jan-16 A												
Spillway Stoplogs																	
Upstream Permanent Stoplogs S1																	
Bay 1																	
A32515	B1 Transport of Upstream Permanent stoplogs S1	0%	56.0d	30-Mar-16	24-May-16												
Bay 2																	
A32520	B2 Transport of Upstream Permanent stoplogs S1	0%	46.0d	30-Apr-16*	14-Jun-16												
Upstream Temporary Stoplogs S2 / S3																	
Bay 1																	
A32525	B1 Transport of Upstream Temporary stoplogs S2/S3	0%	35.0d	20-Apr-16	24-May-16												
Bay 2																	
A32530	B2 Transport of Upstream Temporary stoplogs S2/S3	0%	46.0d	30-Apr-16*	14-Jun-16												
Downstream Stoplogs S4																	
Bay 1																	
A32535	B1 Transport of Downstream stoplogs S4	0%	46.0d	09-Apr-16*	24-May-16												
Bay 2																	
A32540	B2 Transport of Downstream stoplogs S4	0%	46.0d	28-Apr-16*	12-Jun-16												
Spillway Roller Gate																	
Bay 1																	
A32545	B1 Transport of Spillway Roller Gates	80%	70.0d	14-Jan-16 A	23-Mar-16												
Bay 2																	
A32550	B2 Transport of Spillway Roller Gates	75%	56.0d	20-Jan-16 A	15-Mar-16												
Bay 3																	
A32555	B3 Transport of Spillway Roller Gates	0%	33.0d	25-Feb-16 A	28-Mar-16												
Bay 4																	
A32560	B4 Transport of Spillway Roller Gates	0%	64.0d	25-Feb-16 A	28-Apr-16												
Bay 5																	
A32565	B5 Transport of Spillway Roller Gates	50%	85.0d	04-Feb-16 A	28-Apr-16												
Spillway Towers, Bridge Structure & Hoist House																	
Primary Anchors																	
A32590	Transport of tower and bridge Primary Anchors	100%	5.0d	15-Jul-15 A	20-Jul-15 A												
Bay 1																	
A12695	B1 Transport of Spillway Towers, Bridge Structure & Hoist House (DELETED)	0%	13.0d	08-Feb-16 A	21-Feb-16 A												
A36095	B1 Transport of Spillway South Tower Upper Section	100%	6.0d	23-Feb-16 A	29-Feb-16 A												
A36125	B1 Transport of Spillway Hoist Bridge - South	100%	4.0d	23-Feb-16 A	26-Feb-16 A												
A36100	B1 Transport of Spillway South Tower Lower Section	0%	7.0d	16-Mar-16*	22-Mar-16												
A36115	B1 Transport of Spillway Hoist House - South Walls	0%	3.0d	22-Mar-16*	24-Mar-16												
A36120	B1 Transport of Spillway Hoist House - South Roof	0%	3.0d	28-Mar-16*	30-Mar-16												
Bay 2																	
A36105	B2 Transport of Spillway Intermediate (Pier 1) Tower Upper Section	100%	3.0d	08-Feb-16 A	11-Feb-16 A												
A36110	B2 Transport of Spillway Intermediate (Pier 1) Tower Lower Section	100%	3.0d	08-Feb-16 A	11-Feb-16 A												
A12700	B2 Transport of Spillway Towers, Bridge Structure & Hoist House (DELETED)	0%	12.0d	09-Feb-16 A	21-Feb-16 A												
A36130	B2 Transport of Spillway Hoist Bridge - Central 1	100%	2.0d	01-Mar-16 A	03-Mar-16 A												
A36135	B2 Transport of Spillway Hoist House - Central 1 Walls	0%	4.0d	23-Mar-16*	26-Mar-16												
A36140	B2 Transport of Spillway Hoist House - Central 1 Roof	0%	4.0d	01-Apr-16*	04-Apr-16												
Bay 3																	
A12720	B3 Transport of Spillway Intermediate (Pier 2) Tower Upper Section	100%	3.0d	09-Feb-16 A	12-Feb-16 A												
A12725	B3 Transport of Spillway Intermediate (Pier 2) Tower Lower Section	100%	3.0d	09-Feb-16 A	12-Feb-16 A												
A12705	B3 Transport of Spillway Towers, Bridge Structure & Hoist House (DELETED)	0%	0.0d	20-Feb-16 A	20-Feb-16 A												
A12740	B3 Transport of Spillway Hoist Bridge - Central 2	100%	2.0d	01-Mar-16 A	03-Mar-16 A												
A12730	B3 Transport of Spillway Hoist House - Central 2 Walls	0%	4.0d	23-Mar-16*	26-Mar-16												

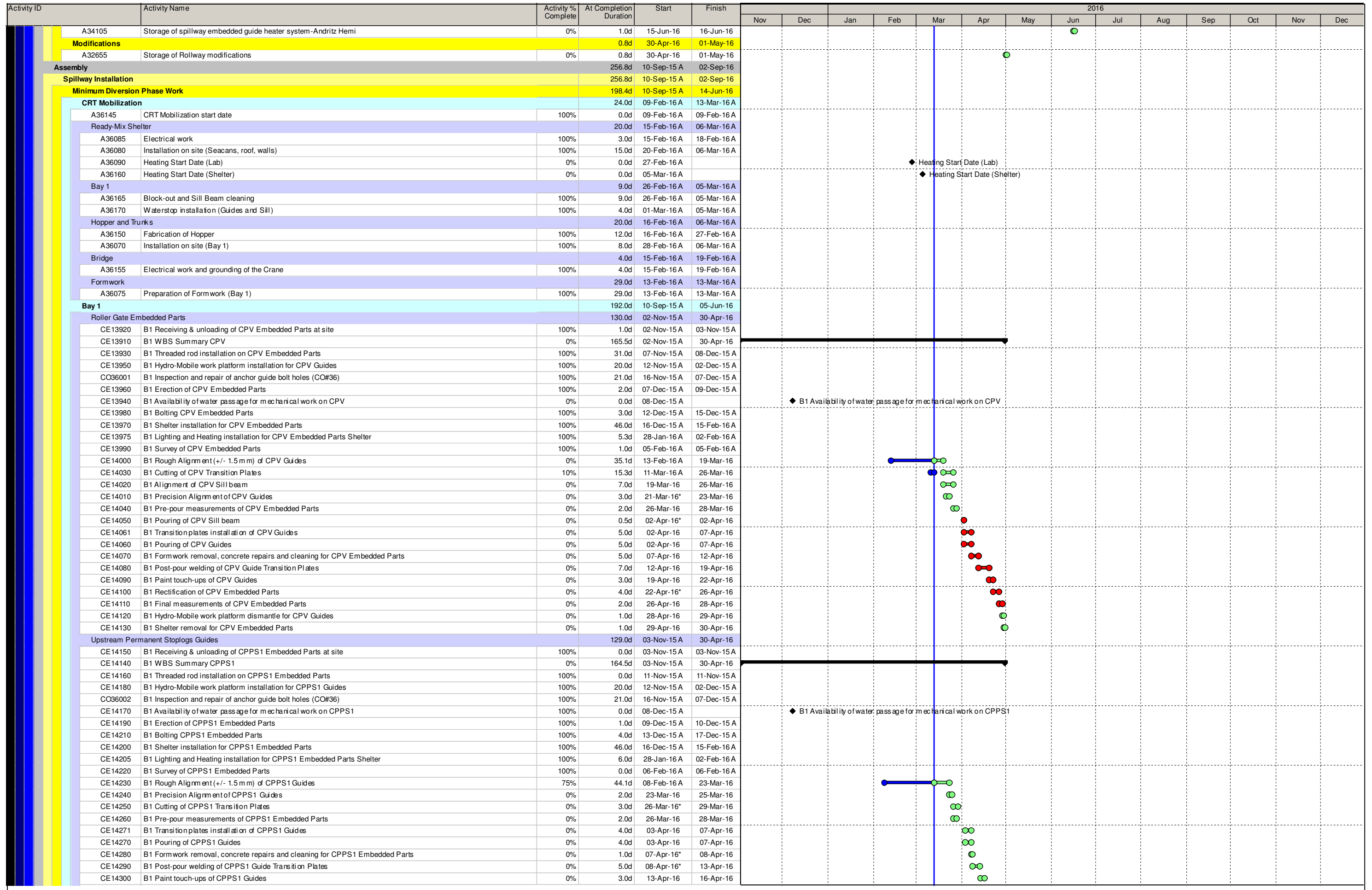
Activity ID	Activity Name	Activity % Complete	At Completion Duration	Start	Finish	2016													
						Nov	Dec	Jan	Feb	Mar	Apr	May	Jun	Jul	Aug	Sep	Oct	Nov	Dec
A12735	B3 Transport of Spillway Hoist House - Central 2 Roof	0%	4.0d	01-Apr-16*	04-Apr-16														
Bay 4																			
A12745	B4 Transport of Spillway Intermediate (Pier 3) Tower Upper Section	100%	2.0d	15-Feb-16 A	05-Apr-16														
A12750	B4 Transport of Spillway Intermediate (Pier 3) Tower Lower Section	100%	2.0d	15-Feb-16 A	17-Feb-16 A														
A12710	B4 Transport of Spillway Towers, Bridge Structure & Hoist House (DELETED)	0%	1.0d	20-Feb-16 A	21-Feb-16 A														
A12775	B4 Transport of Spillway Hoist Bridge - Central 3	100%	3.0d	08-Mar-16 A	11-Mar-16 A														
A12755	B4 Transport of Spillway Hoist House - Central 3 Walls	0%	4.0d	23-Mar-16*	26-Mar-16														
A12760	B4 Transport of Spillway Hoist House - Central 3 Roof	0%	4.0d	02-Apr-16*	05-Apr-16														
Bay 5 (Including North Tower)																			
A12715	B5 Transport of Spillway Towers, Bridge Structure & Hoist House (DELETED)	0%	0.0d	20-Feb-16 A	20-Feb-16 A														
A12790	B5 Transport of Spillway Hoist Bridge - North	100%	3.0d	09-Mar-16 A	12-Mar-16 A														
A12785	B5 Transport of Spillway North Tower Lower Section	0%	6.0d	09-Mar-16 A	14-Mar-16 A														
A12765	B5 Transport of Spillway Intermediate (Pier 4) Tower Upper Section	0%	3.0d	13-Mar-16*	15-Mar-16														
A12770	B5 Transport of Spillway Intermediate (Pier 4) Tower Lower Section	0%	3.0d	13-Mar-16*	15-Mar-16														
A12795	B5 Transport of Spillway Hoist House - North Walls	0%	3.0d	22-Mar-16*	24-Mar-16														
A12780	B5 Transport of Spillway North Tower Upper Section	0%	6.0d	28-Mar-16*	02-Apr-16														
A12800	B5 Transport of Spillway Hoist House - North Roof	0%	3.0d	28-Mar-16*	30-Mar-16														
Spillway Hoist																			
Bay 1																			
A32490	B1 Transport of spillway hoist	0%	3.0d	06-Apr-16*	08-Apr-16														
Bay 2																			
A32495	B2 Transport of spillway hoist	0%	3.0d	06-Apr-16*	08-Apr-16														
Bay 3																			
A32500	B3 Transport of spillway hoist	0%	3.0d	09-Apr-16*	11-Apr-16														
Bay 4																			
A32505	B4 Transport of spillway hoist	0%	3.0d	07-Apr-16*	09-Apr-16														
Bay 5																			
A32510	B5 Transport of spillway hoist	0%	3.0d	13-Mar-16*	15-Mar-16														
TRCM																			
A32570	Transport of TRCM	0%	84.0d	04-May-16	26-Jul-16														
Modifications																			
A32585	Transport of spillway roadway modifications	0%	49.0d	13-Mar-16*	30-Apr-16														
Power & Electrical																			
A2295	Transport of spillway electrical building - Subcontract (structural, architectural and mechanical auxiliaries)	0%	25.0d	11-Mar-16 A	04-Apr-16														
A2170	Transport of spillway embedded guide heater system	0%	50.0d	27-Apr-16	15-Jun-16														
A2245	Transport of spillway hoist tower electrical equipment - Andritz Hemi	0%	30.0d	23-May-16*	21-Jun-16														
A2270	Transport of spillway electrical building electrical equipment - Andritz Hemi	0%	5.0d	24-May-16	28-May-16														
Installation																			
Site Installation																			
Site Coordination																			
A6195	Mobilization discontinued based on LCP notice on 15 Dec 14	100%	167.0d	30-Jun-14 A	14-Dec-14 A														
A8615	Mobilization On Hold Period	100%	245.0d	15-Dec-14 A	31-Aug-15 A														
A8610	Assumed Notice date to resume Mobilization	100%	0.0d	12-Aug-15 A															
A6230	Mobilization	100%	59.0d	02-Sep-15 A	31-Oct-15 A														
A6200	Demobilize	0%	24.0d	29-May-19	21-Jun-19														
SITE COORDINATION-																			
General Site Coordination																			
CE40280	General Site Mobilization	100%	59.0d	02-Sep-15 A	31-Oct-15 A														
CE40290	General Site Demobilization	0%	30.0d	30-Dec-18	29-Jan-19														
Spillway Site Coordination																			
CE12860	Work Preparation of trailers and seacan at Upstream side of Spillway Diversion Phase	0%	3.0d	31-Oct-15 A	02-Nov-15 A														
CE12855	Trailer and seacan installation at Spillway Downstream	0%	0.8d	13-Mar-16	13-Mar-16														
CE12870	End of Hydro-Mechanical Works for river Diversion	0%	0.0d		16-Jun-16														
CE12880	Demobilization from Spillway Diversion Phase	0%	0.0d	16-Jun-16	16-Jun-16														
CE12890	Work Preparation for Bay No. 1 Stoplogs Installation	0%	4.0d	11-Sep-16	14-Sep-16														
CE12900	End of Bay No. 1 Stoplogs Installation	0%	0.0d		18-Sep-16														
CE12910	Work Preparation for Bay No. 1 Rollway modifications	0%	6.0d	20-Nov-17	26-Nov-17														
CE12920	End of Hydro-Mechanical Works for Bay No. 1 Rollway modifications	0%	0.0d		21-Dec-17														
CE12905	Demobilization from Bay No. 1 Rollway modifications	0%	7.0d	21-Dec-17	28-Dec-17														
CE12915	Work Preparation for Bay No. 3&5 Stoplogs Installation	0%	16.0d	28-Dec-17	13-Jan-18														
CE12925	Demobilization from Bay No. 3&5 Rollway modifications	0%	19.5d	18-Jan-18	07-Feb-18														
CE12935	Work Preparation for Bay No. 2&4 Stoplogs Installation	0%	0.8d	07-Feb-18	07-Feb-18														
CE12930	Work Preparation for Bay No. 3 & 5 Rollway Modifications	0%	5.0d	02-Jun-18	07-Jun-18														
CE12940	End of Hydro-Mechanical Works for Bay No. 3 & 5 Rollway modifications	0%	0.0d		05-Jul-18														
CE12950	Work Preparation for Bay No. 2 & 4 Rollway Modifications	0%	5.0d	27-Nov-18	02-Dec-18														
CE12960	End of Hydro-Mechanical Works for Bay No. 2 & 4 Rollway modifications	0%	0.0d		30-Dec-18														
CE12945	Demobilization from Bay No. 2&4 Rollway modifications	0%	2.5d	30-Dec-18	01-Jan-19														
SITE NEED DATES																			
SPILLWAY SITE NEED DATES																			
Site Need Dates for Spillway Roller Gates Embedded Parts																			
Bay 1																			
CE10010	B1 SND for CPV Roller Gate Guides	0%	8.0d	24-Jan-16 A	01-Feb-16 A														

Mobilization

◆ End of Hydro-Mechanical Works for river Diversion

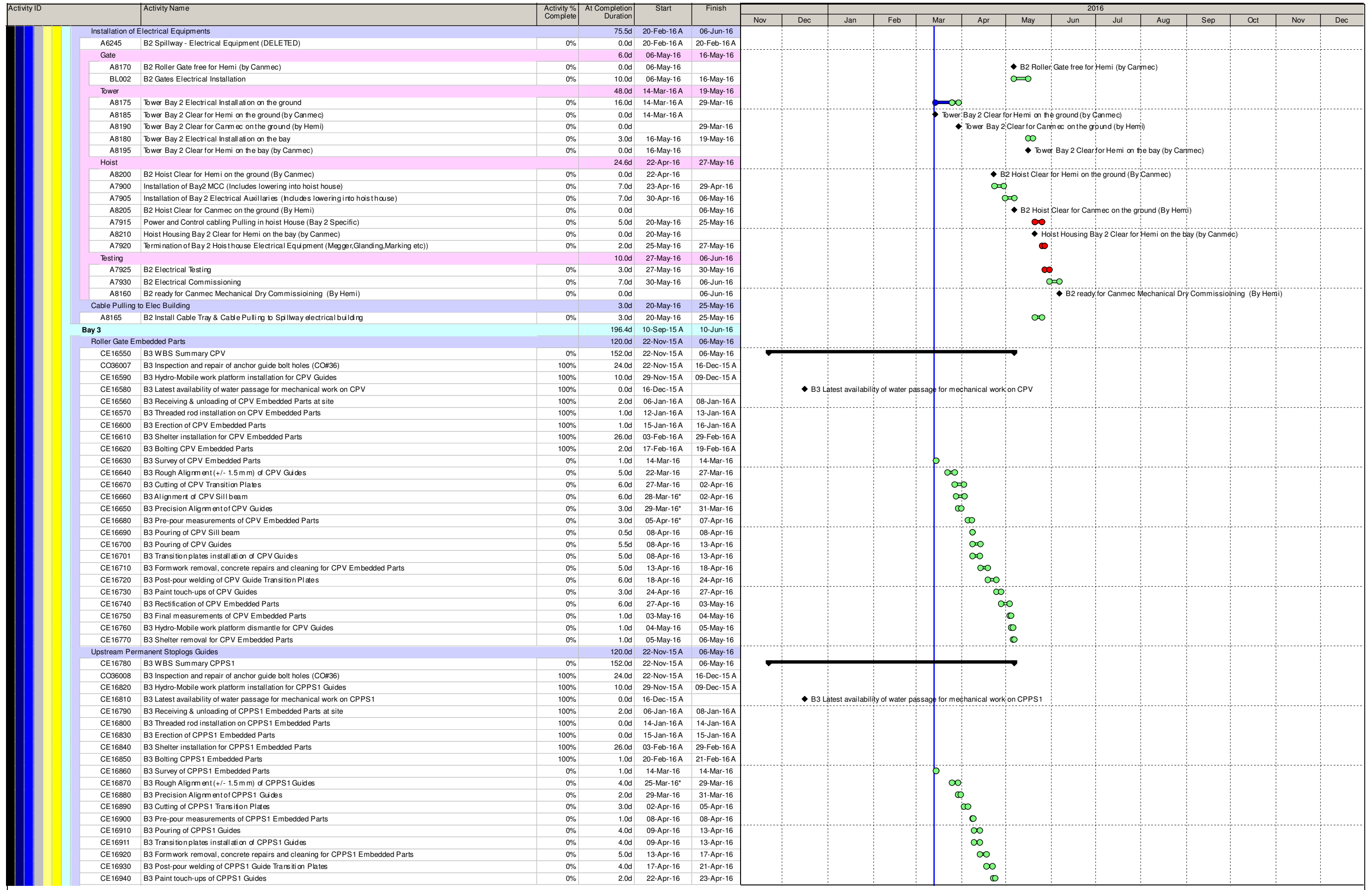
◆ End of Bay No. 1 Stoplogs Installation

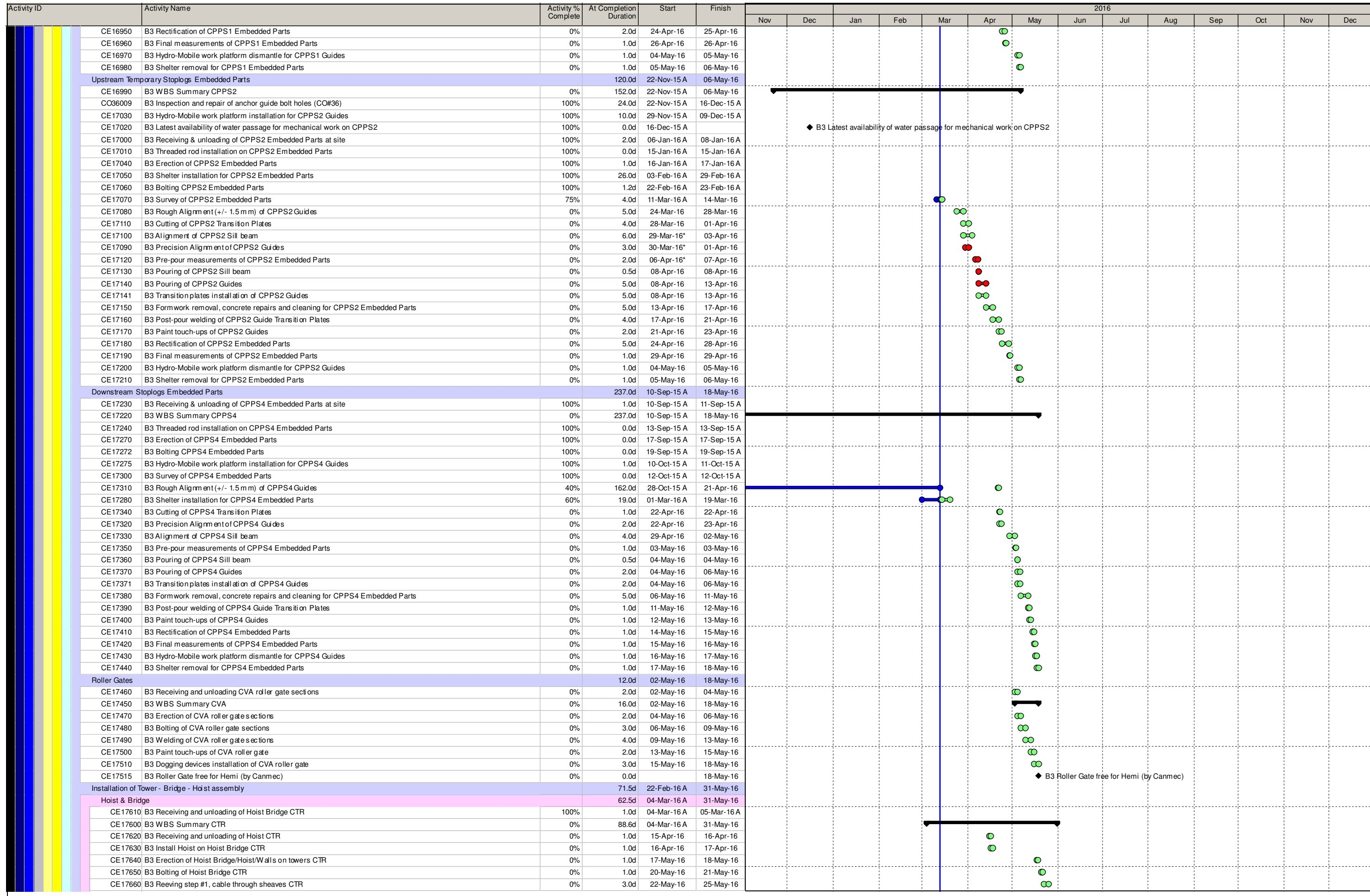
◆ B1 SND for CPV Roller Gate Guides



Activity ID	Activity Name	Activity % Complete	At Completion Duration	Start	Finish	2016												
						Nov	Dec	Jan	Feb	Mar	Apr	May	Jun	Jul	Aug	Sep	Oct	Nov
CE14310	B1 Rectification of CPPS1 Embedded Parts	0%	1.0d	16-Apr-16	17-Apr-16							●						
CE14320	B1 Final measurements of CPPS1 Embedded Parts	0%	1.0d	17-Apr-16	18-Apr-16							●						
CE14330	B1 Hydro-Mobile work platform dismantle for CPPS1 Guides	0%	1.0d	28-Apr-16	29-Apr-16							●						
CE14340	B1 Shelter removal for CPPS1 Embedded Parts	0%	1.0d	29-Apr-16	30-Apr-16							●						
Upstream Temporary Stoplogs Embedded Parts				128.0d	04-Nov-15 A	30-Apr-16												
CE14360	B1 Receiving & unloading of CPPS2 Embedded Parts at site	100%	0.0d	04-Nov-15 A	04-Nov-15 A													
CE14350	B1 WBS Summary CPPS2	0%	163.5d	04-Nov-15 A	30-Apr-16	—————												
CE14370	B1 Threaded rod installation on CPPS2 Embedded Parts	100%	1.0d	09-Nov-15 A	10-Nov-15 A													
CE14390	B1 Hydro-Mobile work platform installation for CPPS2 Guides	100%	20.0d	12-Nov-15 A	02-Dec-15 A													
CO36003	B1 Inspection and repair of anchor guide bolt holes (CO#36)	100%	24.0d	13-Nov-15 A	07-Dec-15 A													
CE14380	B1 Availability of water passage for mechanical work on CPPS2	100%	0.0d	08-Dec-15 A		◆ B1 Availability of water passage for mechanical work on CPPS2												
CE14400	B1 Erection of CPPS2 Embedded Parts	100%	1.0d	12-Dec-15 A	13-Dec-15 A													
CE14420	B1 Bolting CPPS2 Embedded Parts	100%	9.0d	15-Dec-15 A	08-Jan-16 A													
CE14410	B1 Shelter installation for CPPS2 Embedded Parts	100%	46.0d	16-Dec-15 A	15-Feb-16 A													
CE14415	B1 Lighting and Heating installation for CPPS2 Embedded Parts Shelter	100%	6.0d	28-Jan-16 A	02-Feb-16 A													
CE14430	B1 Survey of CPPS2 Embedded Parts	100%	1.0d	03-Feb-16 A	03-Feb-16 A													
CE14440	B1 Rough Alignment (+/- 1.5 m m) of CPPS2 Guides	100%	5.0d	07-Feb-16 A	12-Feb-16 A													
CE14470	B1 Cutting of CPPS2 Transition Plates	100%	20.8d	14-Feb-16 A	05-Mar-16 A													
CE14450	B1 Precision Alignment of CPPS2 Guides	100%	9.9d	19-Feb-16 A	28-Feb-16 A													
CE14460	B1 Alignment of CPPS2 Sill beam	100%	5.0d	29-Feb-16 A	05-Mar-16 A													
CE14480	B1 Pre-pour measurements of CPPS2 Embedded Parts	100%	14.0d	29-Feb-16 A	13-Mar-16							●						
CE14490	B1 Pouring of CPPS2 Sill beam	0%	0.5d	14-Mar-16	14-Mar-16							●						
CE14501	B1 Transition plates installation of CPPS2 Guides	0%	6.0d	14-Mar-16	20-Mar-16							●						
CE14500	B1 Pouring of CPPS2 Guides	0%	5.0d	14-Mar-16	19-Mar-16							●						
CE14510	B1 Formwork removal, concrete repairs and cleaning for CPPS2 Embedded Parts	0%	5.0d	20-Mar-16	25-Mar-16							●						
CE14520	B1 Post-pour welding of CPPS2 Guide Transition Plates	0%	5.0d	25-Mar-16	30-Mar-16							●						
CE14530	B1 Paint touch-ups of CPPS2 Guides	0%	3.0d	30-Mar-16	02-Apr-16							●						
CE14540	B1 Rectification of CPPS2 Embedded Parts	0%	6.0d	02-Apr-16	08-Apr-16							●						
CE14550	B1 Final measurements of CPPS2 Embedded Parts	0%	2.0d	08-Apr-16	10-Apr-16							●						
CE14560	B1 Hydro-Mobile work platform dismantle for CPPS2 Guides	0%	1.0d	28-Apr-16	29-Apr-16							●						
CE14570	B1 Shelter removal for CPPS2 Embedded Parts	0%	1.0d	29-Apr-16	30-Apr-16							●						
Downstream Stoplogs Embedded Parts				227.0d	10-Sep-15 A	08-May-16												
CE14580	B1 WBS Summary CPPS4	0%	227.0d	10-Sep-15 A	08-May-16	—————												
CE14590	B1 Receiving & unloading of CPPS4 Embedded Parts at site	100%	0.0d	10-Sep-15 A	10-Sep-15 A													
CE14600	B1 Threaded rod installation on CPPS4 Embedded Parts	100%	0.0d	12-Sep-15 A	12-Sep-15 A													
CE14630	B1 Erection of CPPS4 Embedded Parts	100%	0.0d	15-Sep-15 A	15-Sep-15 A													
CE14632	B1 Bolting CPPS4 Embedded Parts	100%	0.0d	18-Sep-15 A	18-Sep-15 A													
CE14633	Delay for upstream acceleration	0%	185.0d	27-Sep-15 A	13-Apr-16	—————												
CE14635	B1 Hydro-Mobile work platform installation for CPPS4 Guides (Scissor Lift)	100%	6.0d	03-Oct-15 A	09-Oct-15 A							●						
CE14660	B1 Survey of CPPS4 Embedded Parts	100%	0.0d	07-Oct-15 A	07-Oct-15 A													
CE14640	B1 Shelter installation for CPPS4 Embedded Parts	0%	3.0d	14-Mar-16	16-Mar-16							●						
CE14670	B1 Rough Alignment (+/- 1.5 m m) of CPPS4 Guides	0%	2.0d	14-Apr-16	15-Apr-16							●						
CE14700	B1 Cutting of CPPS4 Transition Plates	0%	1.0d	16-Apr-16	16-Apr-16							●						
CE14680	B1 Precision Alignment of CPPS4 Guides	0%	2.0d	16-Apr-16	17-Apr-16							●						
CE14690	B1 Alignment of CPPS4 Sill beam	0%	5.0d	18-Apr-16	22-Apr-16							●						
CE14710	B1 Pre-pour measurements of CPPS4 Embedded Parts	0%	1.0d	23-Apr-16	23-Apr-16							●						
CE14720	B1 Pouring of CPPS4 Sill beam	0%	0.5d	26-Apr-16	26-Apr-16							●						
CE14731	B1 Transition plates installation of CPPS4 Guides	0%	2.0d	26-Apr-16	28-Apr-16							●						
CE14730	B1 Pouring of CPPS4 Guides	0%	2.0d	26-Apr-16	28-Apr-16							●						
CE14740	B1 Formwork removal, concrete repairs and cleaning for CPPS4 Embedded Parts	0%	5.0d	28-Apr-16	03-May-16							●						
CE14750	B1 Post-pour welding of CPPS4 Guide Transition Plates	0%	1.0d	03-May-16	04-May-16							●						
CE14760	B1 Paint touch-ups of CPPS4 Guides	0%	1.0d	04-May-16	05-May-16							●						
CE14770	B1 Rectification of CPPS4 Embedded Parts	0%	1.0d	04-May-16	05-May-16							●						
CE14780	B1 Final measurements of CPPS4 Embedded Parts	0%	1.0d	05-May-16	06-May-16							●						
CE14790	B1 Hydro-Mobile work platform dismantle for CPPS4 Guides	0%	1.0d	06-May-16	07-May-16							●						
CE14800	B1 Shelter removal for CPPS4 Embedded Parts	0%	1.0d	07-May-16	08-May-16							●						
Roller Gates				14.5d	25-Apr-16	14-May-16												
CE14830	B1 Receiving and unloading CVA roller gate sections	0%	3.0d	25-Apr-16	28-Apr-16							●						
CE14810	B1 WBS Summary CVA	0%	19.0d	25-Apr-16	14-May-16							●						
CE14840	B1 Erection of CVA roller gate sections	0%	3.0d	28-Apr-16	01-May-16							●						
CE14820	B1 Roller Gate delay to optimize 300T crane	0%	0.0d	28-Apr-16	28-Apr-16							●						
CE14850	B1 Bolting of CVA roller gate sections	0%	3.0d	01-May-16	04-May-16							●						
CE14860	B1 Welding of CVA roller gate sections	0%	5.0d	04-May-16	09-May-16							●						
CE14870	B1 Paint touch-ups of CVA roller gate	0%	3.0d	09-May-16	12-May-16							●						
CE14880	B1 Dogging devices installation of CVA roller gate	0%	2.0d	12-May-16	14-May-16							●						
CE14885	B1 Roller Gate free for Hemi (by Canmec)	0%	0.0d		14-May-16							●						
Installation of Tower - Bridge - Hoist assembly				63.5d	28-Feb-16 A	26-May-16												
Hoist & Bridge				63.5d	28-Feb-16 A	26-May-16												
CE14980	B1 WBS Summary CTR	0%	88.5d	28-Feb-16 A	26-May-16							●						
CE14990	B1 Receiving and unloading of Hoist Bridge CTR	100%	0.0d	28-Feb-16 A	28-Feb-16 A	—————												
CE15000	B1 Receiving and unloading of Hoist CTR	0%	1.0d	09-Apr-16	10-Apr-16							●						
CE15010	B1 Install Hoist on Hoist Bridge CTR	0%	2.0d	10-Apr-16	12-Apr-16							●						

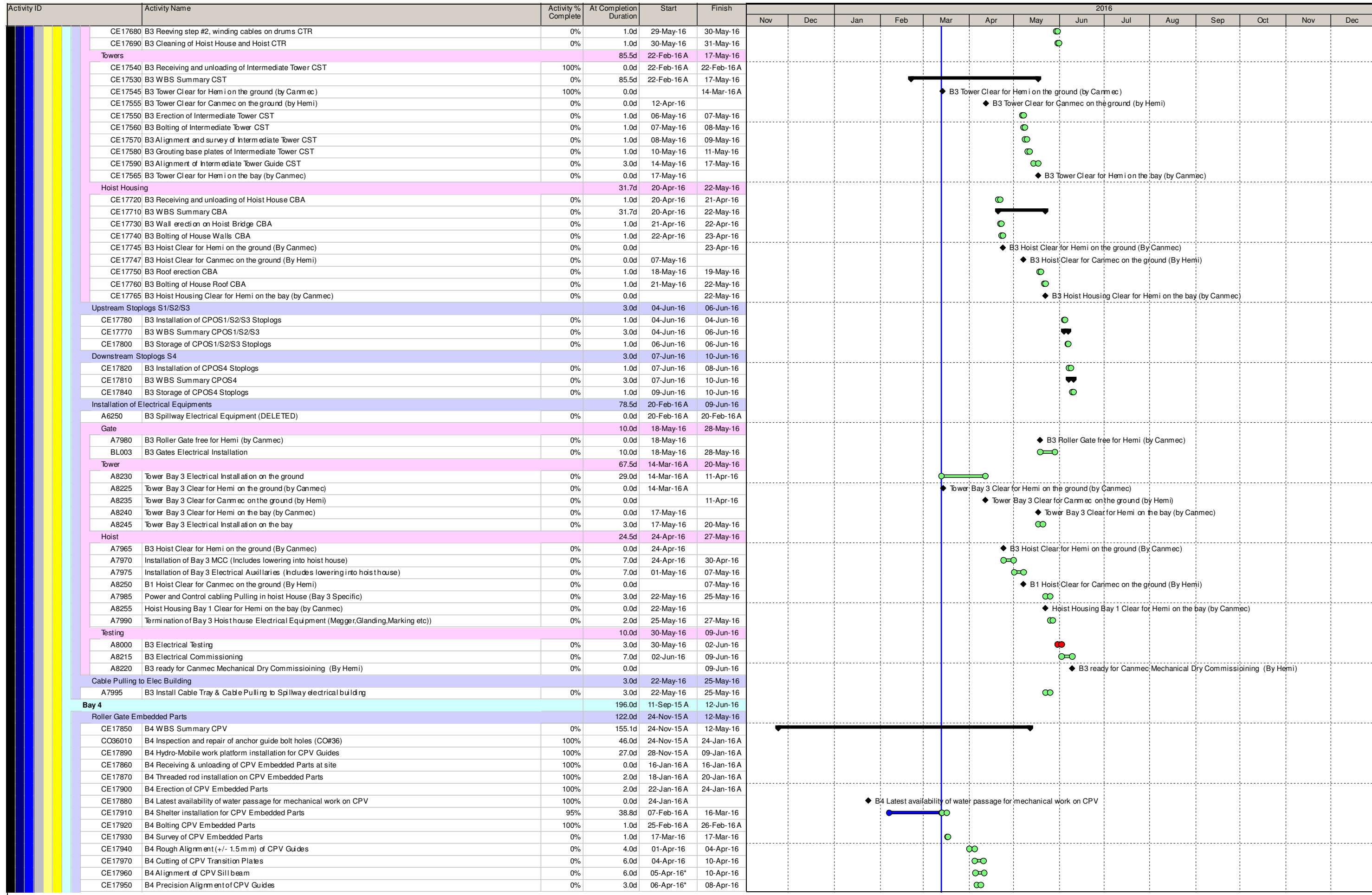
Activity ID	Activity Name	Activity % Complete	At Completion Duration	Start	Finish	2016											
						Nov	Dec	Jan	Feb	Mar	Apr	May	Jun	Jul	Aug	Sep	Oct
CE15920	B2 WBS Summary CPPS4	0%	232.0d	10-Sep-15 A	13-May-16	[Gantt bar from Sep-15 to May-16]											
CE15930	B2 Receiving & unloading of CPPS4 Embedded Parts at site	100%	0.0d	10-Sep-15 A	10-Sep-15 A												
CE15940	B2 Threaded rod installation on CPPS4 Embedded Parts	100%	1.0d	12-Sep-15 A	13-Sep-15 A												
CE15970	B2 Erection of CPPS4 Embedded Parts	100%	0.0d	16-Sep-15 A	16-Sep-15 A												
CE15972	B2 Bolting CPPS4 Embedded Parts	100%	0.0d	19-Sep-15 A	19-Sep-15 A												
CE15975	B2 Hydro-Mobile work platform installation for CPPS4 Guides	100%	6.0d	03-Oct-15 A	09-Oct-15 A												
CE16000	B2 Survey of CPPS4 Embedded Parts	100%	0.0d	10-Oct-15 A	10-Oct-15 A												
CE16010	B2 Rough Alignment (+/- 1.5mm) of CPPS4 Guides	40%	160.0d	27-Oct-15 A	18-Apr-16	[Gantt bar from Oct-15 to Apr-16]											
CE15980	B2 Shelter installation for CPPS4 Embedded Parts	0%	1.0d	17-Mar-16	17-Mar-16												
CE16020	B2 Precision Alignment of CPPS4 Guides	0%	2.0d	19-Apr-16	20-Apr-16												
CE16040	B2 Cutting of CPPS4 Transition Plates	0%	1.0d	19-Apr-16	19-Apr-16												
CE16030	B2 Alignment of CPPS4 Sill beam	0%	4.0d	24-Apr-16	27-Apr-16												
CE16050	B2 Pre-pour measurements of CPPS4 Embedded Parts	0%	1.0d	28-Apr-16	28-Apr-16												
CE16060	B2 Pouring of CPPS4 Sill beam	0%	0.5d	29-Apr-16	29-Apr-16												
CE16070	B2 Pouring of CPPS4 Guides	0%	2.0d	29-Apr-16	01-May-16												
CE16071	B2 Transition plates installation of CPPS4 Guides	0%	2.0d	29-Apr-16	01-May-16												
CE16080	B2 Formwork removal, concrete repairs and cleaning for CPPS4 Embedded Parts	0%	5.0d	01-May-16	06-May-16												
CE16090	B2 Post-pour welding of CPPS4 Guide Transition Plates	0%	1.0d	06-May-16	07-May-16												
CE16100	B2 Paint touch-ups of CPPS4 Guides	0%	1.0d	07-May-16	08-May-16												
CE16110	B2 Rectification of CPPS4 Embedded Parts	0%	1.0d	09-May-16	10-May-16												
CE16120	B2 Final measurements of CPPS4 Embedded Parts	0%	1.0d	10-May-16	11-May-16												
CE16130	B2 Hydro-Mobile work platform dismantle for CPPS4 Guides	0%	1.0d	11-May-16	12-May-16												
CE16140	B2 Shelter removal for CPPS4 Embedded Parts	0%	1.0d	12-May-16	13-May-16												
Roller Gates																	
CE16160	B2 Receiving and unloading CVA roller gate sections	0%	2.0d	17-Apr-16	19-Apr-16												
CE16150	B2 WBS Summary CVA	0%	19.0d	17-Apr-16	05-May-16	[Gantt bar from Apr-16 to May-16]											
CE16170	B2 Erection of CVA roller gate sections	0%	4.0d	19-Apr-16	23-Apr-16												
CE16180	B2 Bolting of CVA roller gate sections	0%	3.0d	23-Apr-16	26-Apr-16												
CE16190	B2 Welding of CVA roller gate sections	0%	0.2d	26-Apr-16	26-Apr-16												
CE16200	B2 Paint touch-ups of CVA roller gate	0%	6.5d	26-Apr-16	02-May-16												
CE16210	B2 Dogging devices installation of CVA roller gate	0%	3.0d	03-May-16	05-May-16												
CE16165	B2 Roller Gate free for Hemi (by Canmec)	0%	0.0d		05-May-16	◆ B2 Roller Gate free for Hemi (by Canmec)											
Installation of Tower - Bridge - Hoist assembly																	
Hoist & Bridge																	
CE16310	B2 Receiving and unloading of Hoist Bridge CTR	100%	1.0d	04-Mar-16 A	05-Mar-16 A												
CE16300	B2 WBS Summary CTR	0%	88.5d	04-Mar-16 A	31-May-16	[Gantt bar from Mar-16 to May-16]											
CE16320	B2 Receiving and unloading of Hoist CTR	0%	1.0d	12-Apr-16	13-Apr-16												
CE16330	B2 Install Hoist on Hoist Bridge CTR	0%	2.0d	13-Apr-16	15-Apr-16												
CE16340	B2 Erection of Hoist Bridge/Hoist/Walls on towers CTR	0%	2.0d	14-May-16	16-May-16												
CE16350	B2 Bolting of Hoist Bridge CTR	0%	2.0d	17-May-16	19-May-16												
CE16360	B2 Reeving step #1, cable through sheaves CTR	0%	3.0d	19-May-16	22-May-16												
CE16380	B2 Reeving step #2, winding cables on drums CTR	0%	2.0d	27-May-16	29-May-16												
CE16390	B2 Cleaning of Hoist House and Hoist CTR	0%	2.0d	29-May-16	31-May-16												
Towers																	
CE16240	B2 Receiving and unloading of Intermediate Tower CST	100%	0.0d	21-Feb-16 A	21-Feb-16 A												
CE16230	B2 WBS Summary CST	0%	85.1d	21-Feb-16 A	16-May-16	[Gantt bar from Feb-16 to May-16]											
CE16245	B2 Tower Clear for Hemi on the ground (by Canmec)	100%	0.0d		14-Mar-16 A	◆ B2 Tower Clear for Hemi on the ground (by Canmec)											
CE16255	B2 Tower Clear for Canmec on the ground (by Hemi)	0%	0.0d	30-Mar-16		◆ B2 Tower Clear for Canmec on the ground (by Hemi)											
CE16250	B2 Erection of Intermediate Tower CST	0%	1.0d	01-May-16	02-May-16												
CE16260	B2 Bolting of Intermediate Tower CST	0%	1.0d	04-May-16	05-May-16												
CE16270	B2 Alignment and survey of Intermediate Tower CST	0%	2.0d	06-May-16	08-May-16												
CE16280	B2 Grouting base plates of Intermediate Tower CST	0%	2.0d	08-May-16	10-May-16												
CE16290	B2 Alignment of Intermediate Tower Guide CST	0%	3.0d	11-May-16	14-May-16												
CE16265	B2 Tower Clear for Hemi on the bay (by Canmec)	0%	0.0d		16-May-16	◆ B2 Tower Clear for Hemi on the bay (by Canmec)											
Hoist Housing																	
CE16410	B2 WBS Summary CBA	0%	33.7d	16-Apr-16	20-May-16	[Gantt bar from Apr-16 to May-16]											
CE16420	B2 Receiving and unloading of Hoist House CBA	0%	2.0d	16-Apr-16	18-Apr-16												
CE16430	B2 Wall erection on Hoist Bridge CBA	0%	2.0d	18-Apr-16	20-Apr-16												
CE16440	B2 Bolting of House Walls CBA	0%	2.0d	20-Apr-16	22-Apr-16												
CE16445	B2 Hoist Clear for Hemi on the ground (By Canmec)	0%	0.0d		22-Apr-16	◆ B2 Hoist Clear for Hemi on the ground (By Canmec)											
CE16447	B2 Hoist Clear for Canmec on the ground (By Hemi)	0%	0.0d	06-May-16		◆ B2 Hoist Clear for Canmec on the ground (By Hemi)											
CE16450	B2 Roof erection CBA	0%	1.0d	16-May-16	17-May-16												
CE16460	B2 Bolting of House Roof CBA	0%	1.0d	19-May-16	20-May-16												
CE16465	B2 Hoist Housing Clear for Hemi on the bay (by Canmec)	0%	0.0d		20-May-16	◆ B2 Hoist Housing Clear for Hemi on the bay (by Canmec)											
Upstream Stoplogs S1/S2/S3																	
CE16480	B2 Installation of CPOS1/S2/S3 Stoplogs	0%	2.0d	30-May-16	31-May-16												
CE16470	B2 WBS Summary CPOS1/S2/S3	0%	5.0d	30-May-16	03-Jun-16	[Gantt bar from May-16 to Jun-16]											
CE16500	B2 Storage of CPOS1/S2/S3 Stoplogs	0%	1.0d	03-Jun-16	03-Jun-16												
Downstream Stoplogs S4																	
CE16520	B2 Installation of CPOS4 Stoplogs	0%	1.0d	05-Jun-16	06-Jun-16												
CE16510	B2 WBS Summary CPOS4	0%	3.0d	05-Jun-16	08-Jun-16	[Gantt bar from Jun-16 to Jun-16]											
CE16540	B2 Storage of CPOS4 Stoplogs	0%	1.0d	07-Jun-16	08-Jun-16												





◆ B3 Latest availability of water passage for mechanical work on CPPS2

◆ B3 Roller Gate free for Hemi (by Canmec)



Activity ID	Activity Name	Activity % Complete	At Completion Duration	Start	Finish	2016													
						Nov	Dec	Jan	Feb	Mar	Apr	May	Jun	Jul	Aug	Sep	Oct	Nov	Dec
CE20360	B5 Dry Commissioning of Hoist CTR	0%	1.3d	13-Jun-16	15-Jun-16								●						
CE18820	B4 Dry Commissioning of CVA roller Gate	0%	1.0d	13-Jun-16	14-Jun-16								●						
CE20120	B5 Dry Commissioning of CVA roller Gate	0%	0.9d	15-Jun-16	16-Jun-16								●						
Spillway Commissioning of Complete Diversion Phase			74.1d	15-Jun-16	27-Sep-16														
AC001	Measurement of guide wheels gaps & bumper tests and load test	0%	10.0d	15-Jun-16	29-Jun-16								—●						
AC002	Control Testing Fully complete	0%	15.0d	15-Jun-16	06-Jul-16								—●						
AC003	Electrical Load Management Fully operational	0%	15.0d	06-Jul-16	27-Jul-16								—●						
A6275	Commissioning of electrical building - AC/DC & Local Control - Andritz Hemi	0%	25.0d	23-Aug-16	17-Sep-16									—●					
A6640	Commissioning of trash cleaner hoist	0%	20.0d	28-Aug-16	16-Sep-16										—●				
A6305	Commissioning of electrical building-Grimard	0%	15.0d	02-Sep-16	17-Sep-16											—●			
A6315	Commissioning of electrical building - AC/DC & Comm on Control- Andritz Hemi	0%	10.0d	17-Sep-16	27-Sep-16												—●		



BUILDING FOR THE FUTURE
SINCE 50 YEARS

Muskat Falls, March 18th, 2016

CRT-AND-L-2016-036r1
15-01

Mr. Bill Mavromatis,
Project Manager
ANDRITZ HYDRO CANADA INC.
6100 Trans Canada HWY
Pointe-Claire, (Québec) H9R 1B9

BY EMAIL
william.mavromatis@andritz-hydro.com


**PROJECT: MUSKRAT FALLS GATES – SECOND STAGE CONCRETE SUPPLY AND
INSTALL SECOND STAGE CONCRETE FOR THE POWERHOUSE AND
SPILLWAY – HYDRO-MECHANICAL EQUIPMENT
AGREEMENT NO. CH0032-03**

SUBJECT: Commitment to plan to achieve river diversion on Jun 15, 2016

Sir,

This letter serves to re-affirm CRT commitment to their second stage concrete pouring activities shown on the plan presented on March 18, 2016 with the objective to achieve river diversion on June 15, 2016.

Best regards,



Jean-François Turgeon, Eng.
Project Director

JFT/pg

c.c.: Daniel Carrier, President, Andritz Hydro Canada Inc.
Mathieu Bertrand, Project Manager, Andritz Hydro Canada Inc.
Steven Hillier, Procurement Planner, Andritz Hydro Canada Inc.
Daniel Bernier, Site Manager, Andritz Hydro Canada Inc.
Jean Rochon, Large Hydro Operations Manager, Andritz Hydro Canada Inc.
Brian Keating, AH Site Coordinator Manager, Andritz Hydro Canada Inc.
Jean-Sébastien Martel, Eng., Project Manager, CRT Construction Inc.
Pierre-Paul Porlier, Construction Vice-President, CRT Construction Inc.

HEAD OFFICE

870 Archimède Street
Lévis, Qc G6V 7M5
Tel. : 418 833.8073
Fax. : 418 833.9629

levis@crtconstruction.ca

BRANCH OFFICE

95 J.-A.-Bombardier Street, Suite 4
Boucherville, Qc J4B 8P1
Tel. : 450 641.9161
Fax. : 450 641.9184

boucherville@crtconstruction.ca

crtconstruction.ca



WITHOUT PREJUDICE

March 18th, 2016

1994-CNM-HAL-077

Project Management
ANDRITZ HYDRO LTÉE
6100 aut. Transcanadienne
Pointe-Claire, Québec, Canada
H9R 1B9

Attention: William Mavromatis, Project Manager

Subject: Muskrat Falls Gates Project

Dear Mr. Mavromatis,

This letter serves to once again re-affirm Canmec's full determination and dedication towards our mutual objective of trying to achieve river diversion on June 15, 2016.

Best Regards,

Yours truly,

Groupe CANMEC/ CANMEC Industriel

A handwritten signature in blue ink, appearing to read "Eric Tremblay", is written over a horizontal line.

Eric Tremblay
Vice President, Energy
ET/et

Cc: Mathieu Bertrand, Andritz
William mavromatis, Andritz
Jean David Turcotte, Canmec Industrial
Jean Rochon, Andritz