

From: Rideout, Jody
To: jasonkean@lowerchurchillproject.ca
Cc: [Budzinski, Adam](#)
Subject: Valard Presentation 16/12/2013
Date: Saturday, December 21, 2013 12:39:16 PM
Attachments: [.png](#)
[.png](#)
[Nalcor-HVDC-16Dec2013.ppt](#)
[ATT00001.htm](#)

Jason,

The presentation file we presented with on Monday is attached. I've made a couple minor adjustments to reflect discussions with Mark that hadn't taken place due to the weather.

I trust, you'll provide this to whomever needs it.

An email with organization charts will follow.

Thanks,

Jody

Jody Rideout | Director, Major Projects | **Valard Construction LP**

Suite 200 | 3595 - 114 Ave SE | Calgary, AB T2Z 3X2 | www.valard.com

Main: 403.279.1003 | Fax: 403.236.1303 | Cell: 403.700.3411

Email: jrideout@valard.com

[Quanta Services, Inc. \(NYSE: PWR\)](#) | www.quantaservices.com



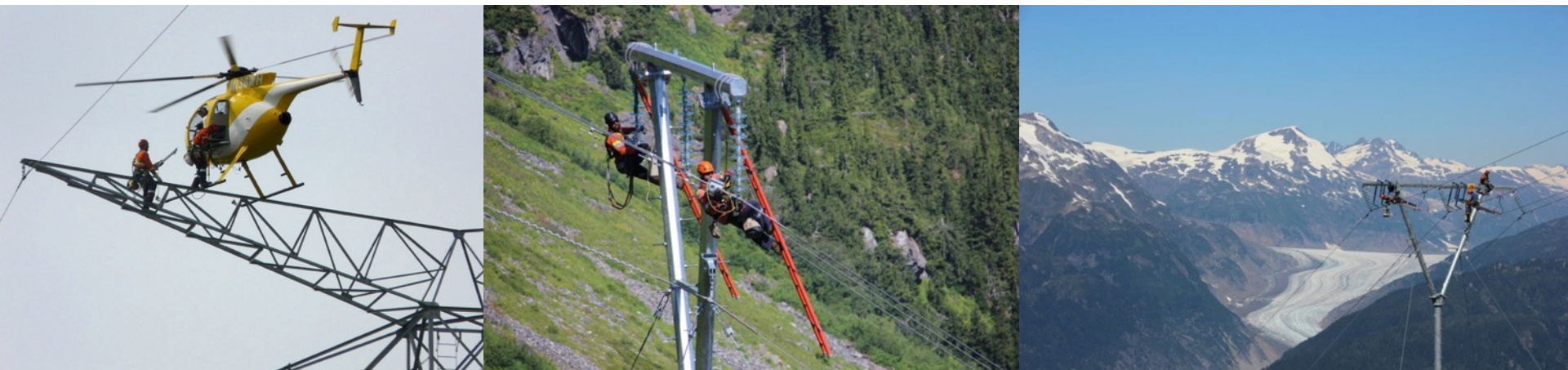


Nalcor - HVDC Line Construction

Dec 16, 2013

Agenda

- Execution Plan
- Management Structure
- The Quanta Team
- Estimate Assumptions

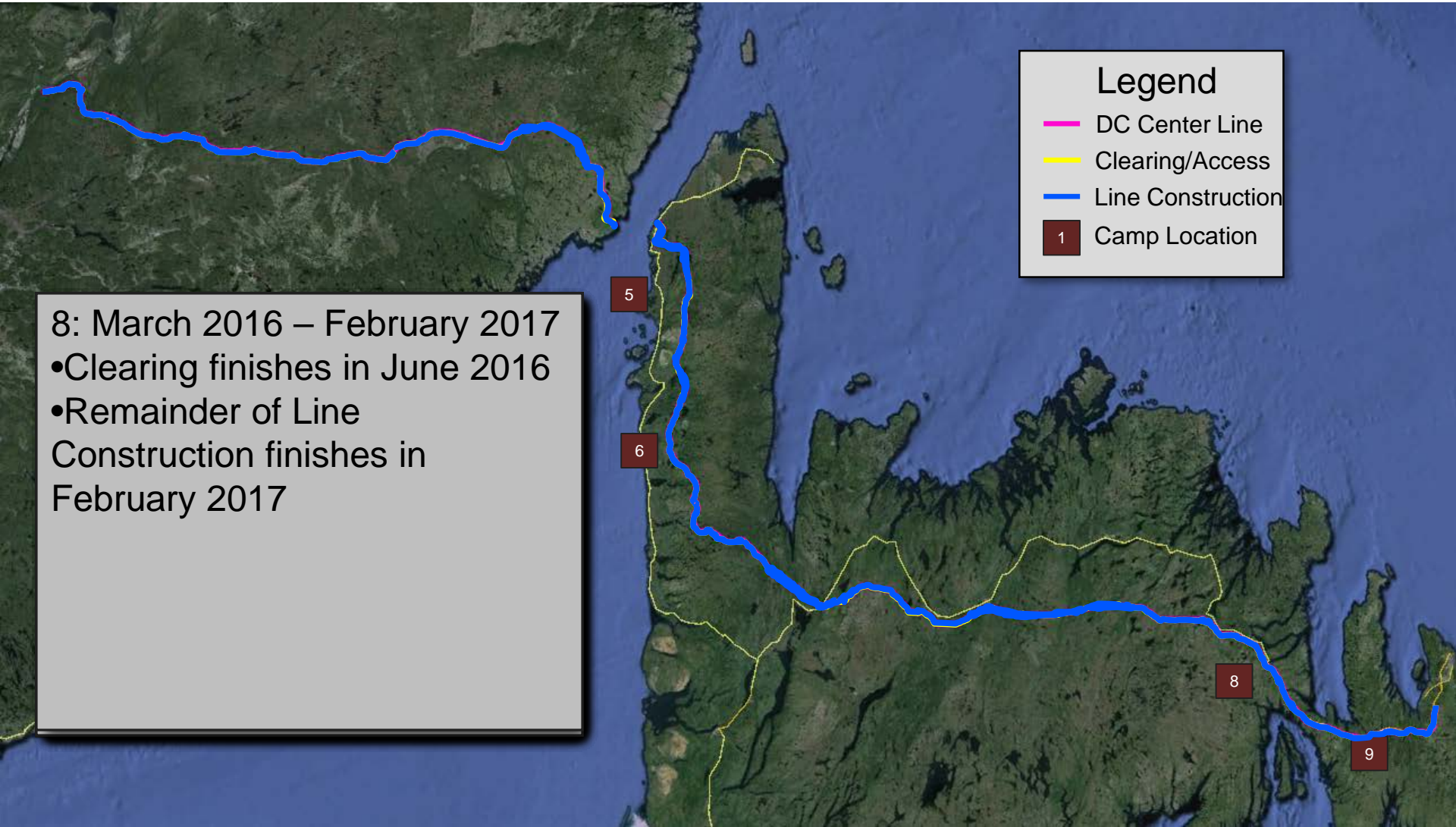
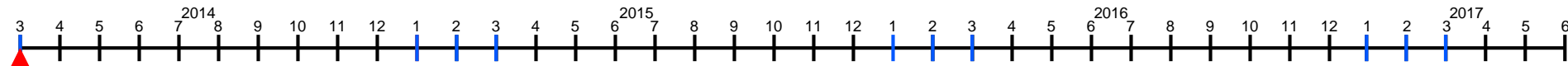


Execution Strategy

- Year round progress across 3 distinct spreads
- Separate management team per spread
- 6 camps deployed to 11 total locations
- Contiguous work fronts = maximum efficiency
- Resource leveled plan reduces camps & indirects
- 18 – 24 month construction window per spread
- Access and clearing begin April 2014 (spread 1)
- All line construction completed by March 2017

Schedule Overview

TIMELINE



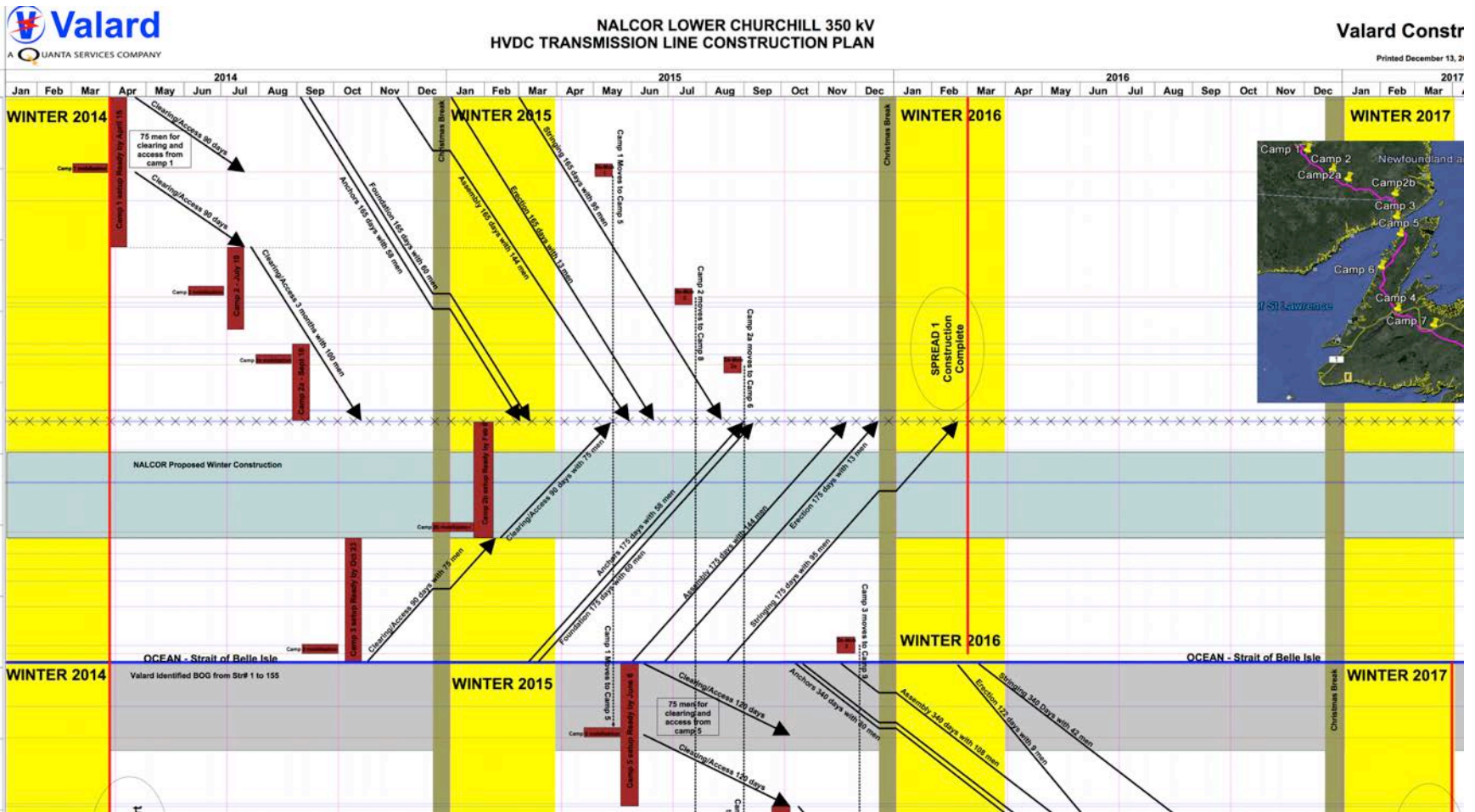
Legend

- DC Center Line
- Clearing/Access
- Line Construction
- 1 Camp Location

8: March 2016 – February 2017

- Clearing finishes in June 2016
- Remainder of Line Construction finishes in February 2017

Execution Plan - Tilos



Execution Plan

- Reduced Work-Fronts
- Reduction of Camp Resources & Overheads
- Management Efficiencies
- Management Consistencies
- Construction Efficiencies

Execution Plan

- LRM – Fewer, Higher Production Crews
- Quality Program
- Leverage Manpower/Resources Deployed To NL
 - CMs, Supervisors, Directors
 - Opportunity to Grow Skilled Positions
- Safety



Execution Plan

- Time Off Coverage

Project Organization



Quanta Executive Operations Support for Valard's Nalcor Projects
 BJ Ducey - VP Quanta Services Inc.

QUANTA EXECUTIVE SUPPORT STEERING COMMITTEE:
 Duke Austin - COO; Vic Budzinski - CEO, Valard; Bill Korfath - President IRBY Construction

In addition to a Parental Guarantee, role of Quanta Operations support group is to provide Valard's execution team additional resources (Labor and Equipment), intellectual property or Capital allocations from the greater Quanta organization that might be needed to successfully execute the scope and scale of the projects.

Adam Budzinski
 President
 Valard Executive Rep.

Jody Rideout
 Project Director

Hayley McNeil
 Corporate Safety

Eric Winter
 Quality Manager

Marc Ouimet
 Manager of Lands,
 Access & Environment

Sam Blair
 Environment Manager

Sean Dunn
 Corporate Controls &
 Scheduling

Bill Zumik
 Project Safety Lead

Louis Thomas
 Project Quality Lead

Tracy Avery
 Project HR &
 Labour Relations Lead

Vjeko Vidakovic
 Stringing Planner

Dean Sjodin
 ROW Manager

Luce Paquin
 Environment Lead

James Wainwright
 Project Controls &
 Scheduling

Project Camp Manager
 **Person to manage a later
 starting work front

Labrador & Northern
 Newfoundland
 Management Team

Long Range Mountains
 Management Team

East Newfoundland
 Management Team

- Camp 1 Manager
- Camp 2 Manager
- Camp 3 Manager
- Camp 4 Manager
- Camp # Manager

Legend

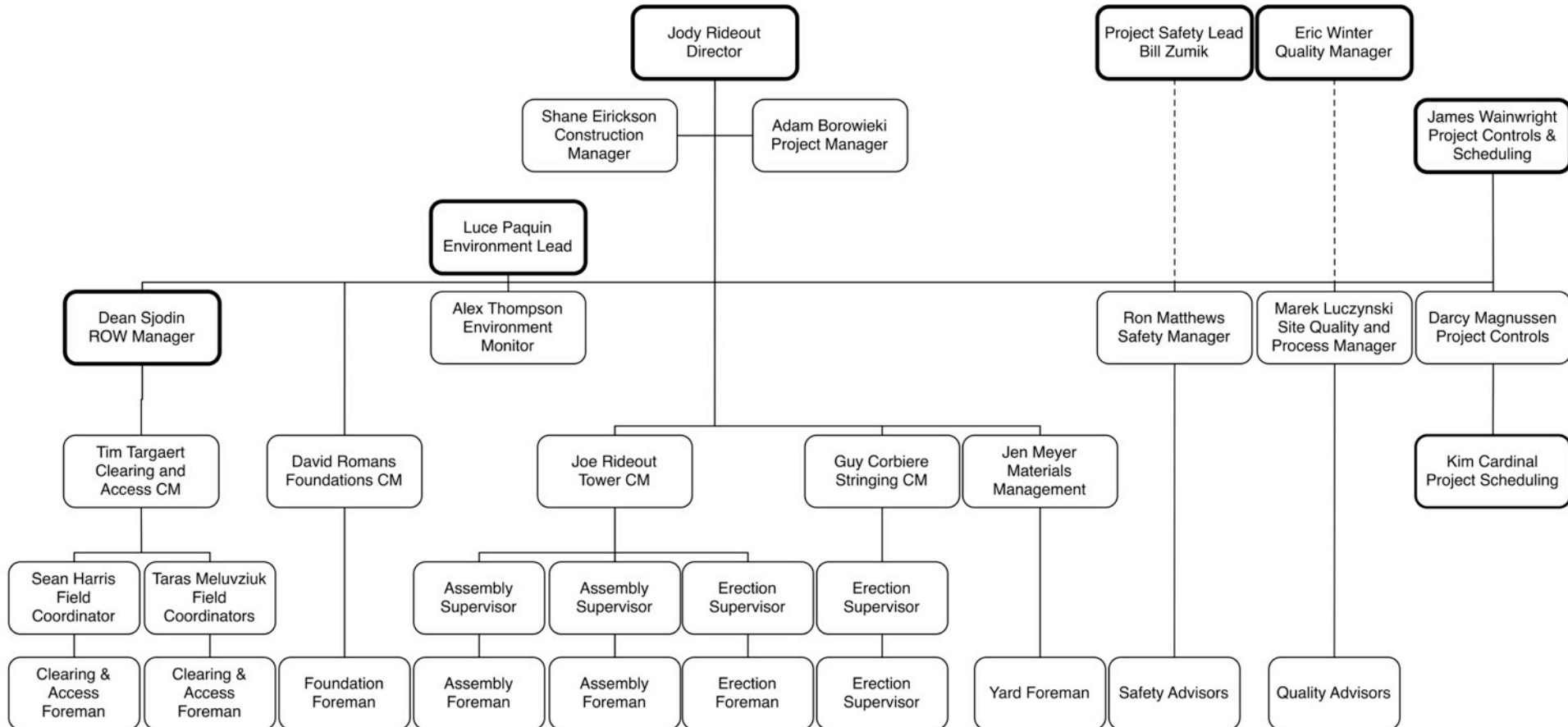
Offsite Personnel

Also part of a Work-Front



Project Organization

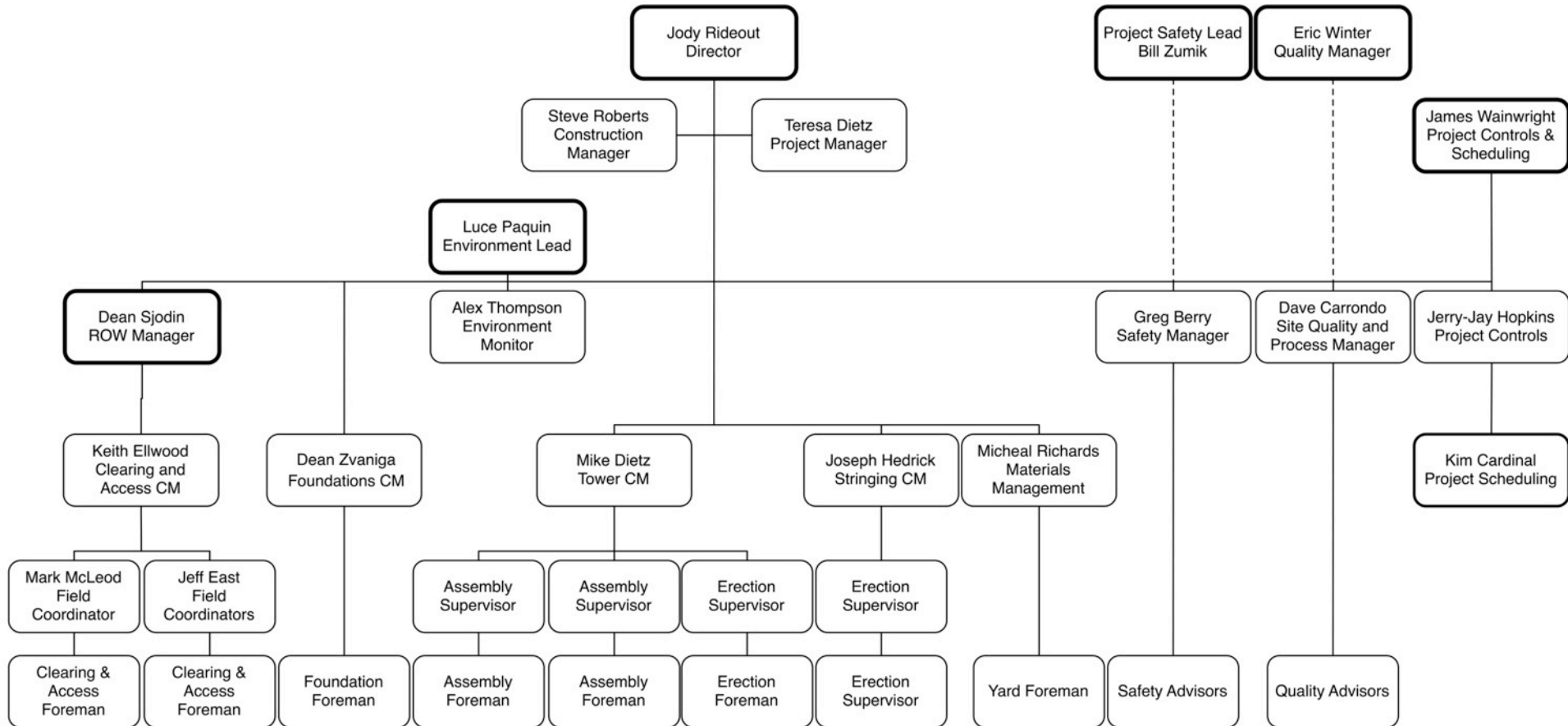
Work-Front 1 & 2





Project Organization

Work-Front 1 & 2



Execution Plan

- **MARC** – KEY HIGHLIGHTS FROM CLEARING PLAN
- **DEAN** – KEY HIGHLIGHTS FROM ACCESS PLAN

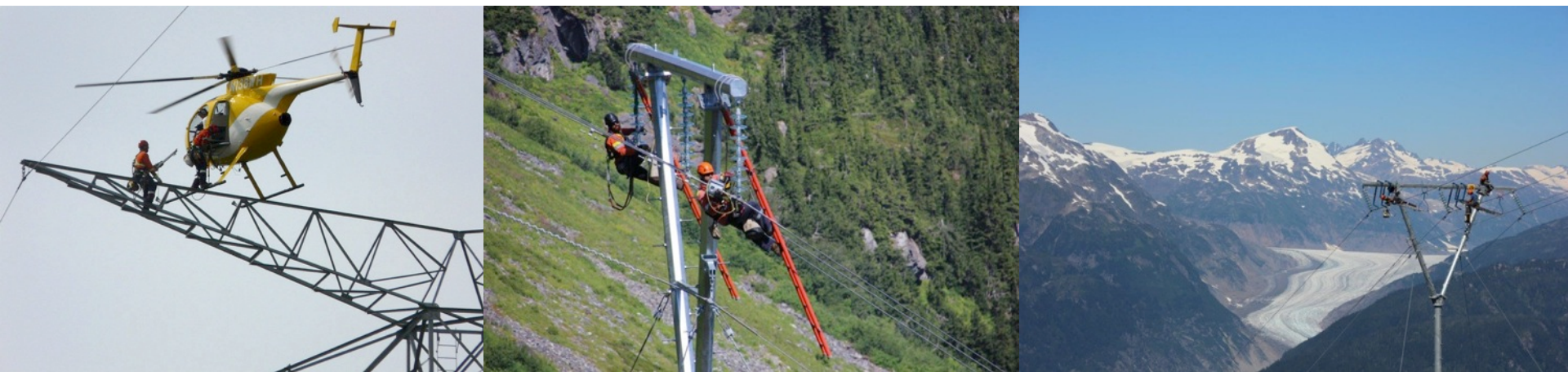
Integrated Quanta Team

- Quanta Executive Support Steering Committee
- Project Director located full time in NL, Regular trips to all Spreads
- Valard & Quanta Executive (Vic/Adam) Support



Quanta Services Capacity

- 17 EHV projects currently underway
- Over \$3 billion USD - total Value of EHV projects
- Canada's largest powerline workforce (Valard)
- Additional capacity – Irby, Allteck, and McGregor



Total Workforce



891



316



242



2,037

3,486



Valard Major Projects

BC Hydro – NTL Project

428 men – available spring 2014

ATCO Electric - EATL Project

458 men – available summer 2014

Sask Power - I1K Project

143 men – available fall 2014

*1,029 total men per Dec 9, 2013 HR Report (NTL, EATL, and I1K)





Estimate & Key Planning Assumptions

Proposal Highlights

- Execution Plan
- Org Charts
- Estimate
- Estimate Details
- Tilos Schedule
- E.P.P.
- Key Assumptions



Next Steps

- Execution Plan and Schedule Adjustment
- Detailed Estimate Walk Through
- Muskrat Falls AC Line Mobilization
- Path Forward – confirm timelines



Comments and Questions

