

**From:** [Emiliano Mancini](#)  
**To:** [Aman Gill](#); [Richard Noble](#)  
**Cc:** [David Steele](#)  
**Subject:** RE: Availability for Gov NL next week  
**Date:** Thursday, November 27, 2014 9:06:00 AM  
**Attachments:** [LCP site visits Nov 25-26 draft.pptx](#)  
[image001.png](#)

---

Please see attached photos and preliminary comments from site visits. Am planning to show this to Craig this morning to help the discussion.

Next week Mon to Thurs I have to be in Regina for a workshop with KSPC, but can provide help remotely.

Regards,



**Emiliano Mancini** | Manager | Advisory Services

Ernst & Young LLP  
Ernst & Young Tower, 222 Bay Street, P. O. Box 251, Toronto, ON M5K 1J7 Canada  
Phone: +1 416 943 4418 | Cell Phone: +1 647 455 0371  
EY/Comm: 1636262 | [Emiliano.Mancini@ca.ey.com](mailto:Emiliano.Mancini@ca.ey.com)

---

**From:** Aman Gill  
**Sent:** Wednesday, November 26, 2014 11:46 PM  
**To:** Richard Noble; Emiliano Mancini  
**Cc:** David Steele  
**Subject:** RE: Availability for Gov NL next week

I can join the call in the am and pinch hit next week.

Aman

---

**From:** Richard Noble  
**Sent:** Wednesday, November 26, 2014 9:39 PM  
**To:** Aman Gill; Emiliano Mancini  
**Cc:** David Steele  
**Subject:** Availability for Gov NL next week

When could you be available to be in St John's next week.

Suddenly become urgent... they realize they are in the poo on getting the report out... Craig will need some help.

Aman could you also be on a call at 8AM tomorrow to listen into the debrief from Emiliano and discuss tactics for next week

Cheers,

R

Lower Churchill Project  
Site Visits with IE and Canada  
Representatives  
Nov 25-26, 2014

# Power House, Spillway, Transition Dam Astaldi



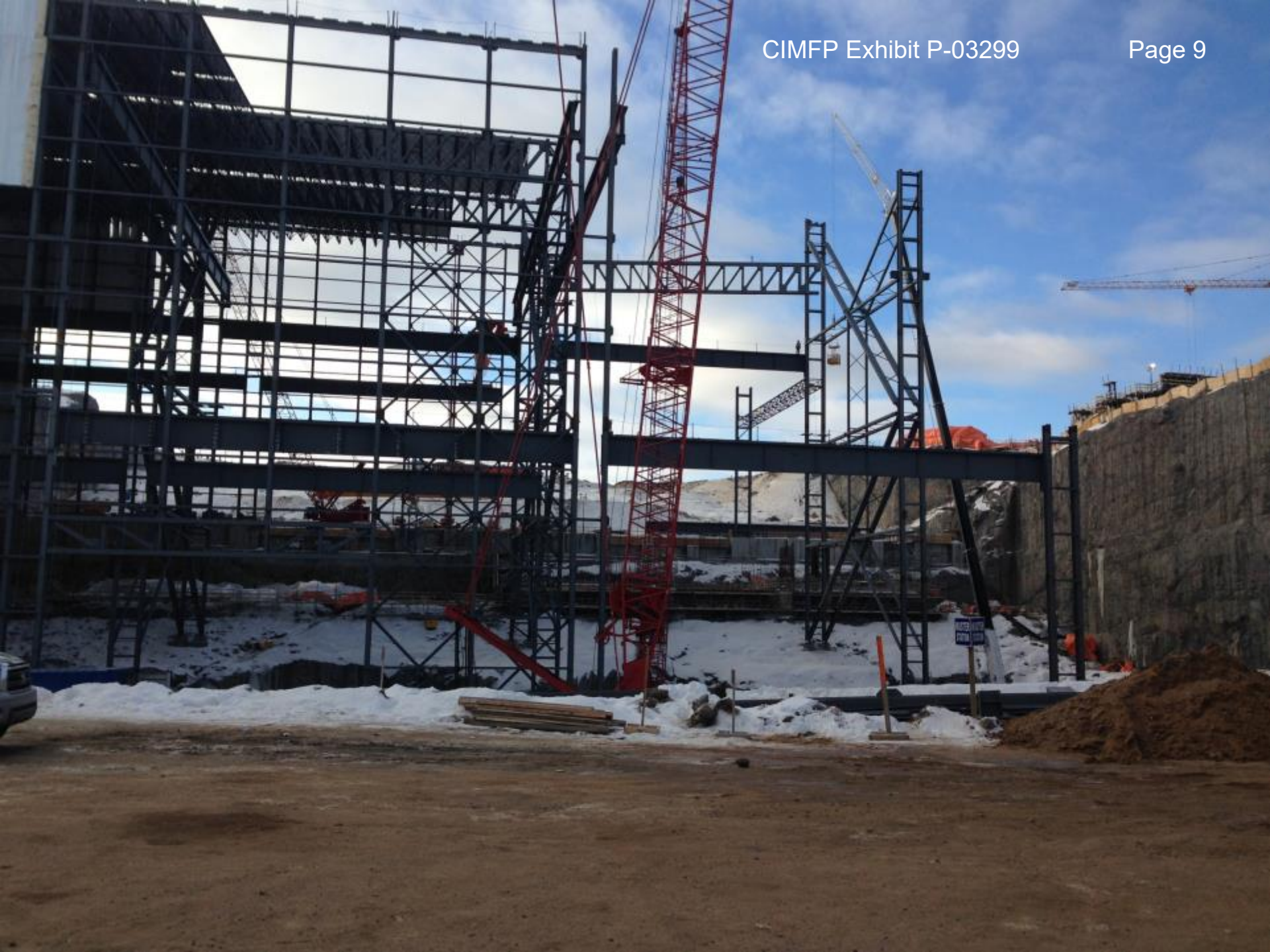




























# Concrete Lab and Batch Plant









# North Spur Transmission Towers Valard











# Preliminary Comments

- Pre-visit presentations were provided by Nalcor, however they were very high level and did not provide figures on project progress and performances.
- Site visits were very informative and provided an high level view of the activities on going, however it was not possible to verify whether works were on schedule, how they compared to the baseline, what their % complete was.
- No specific reference to cost and schedule performance, KPIs, issues and risks was made during the visits.
- Detailed assessment of QA / QC program is required (e.g. process for pouring concrete / RCC at extremely cold temperatures, ensure specs are met)