

From: ronpower@nalcenergy.com
To: [Couturier, Francois](#)
Cc: [Jason Kean](#); [Bechard, Normand](#)
Subject: Fw: Announcement: Integrated Management Team
Date: Friday, March 15, 2013 8:07:08 AM
Attachments: [ATT51A4U.pdf](#)

Francois - fyi - I understand that you are not on the local SLI distribution list. Please forward this missive to our team members in the Montreal office. I will be sending out further organization related e-mails in the next few days and I will copy you.

thanks



Ron Power, P. Eng.
General Project Manager
(Consultant)
Muskrat Falls & Labrador -
Island Transmission Link
Nalcor Energy - Lower
Churchill Project
t. 709-737-4245 f. 709-737-
1985
e.
RonPower@nalcenergy.com
w. nalcenergy.com
1.888.576.5454



Chart LCP1 Project Management Team.pdf

----- Forwarded by Ron Power/NLHydro on 03/15/2013 08:04 AM -----

From: Gilbert Bennett/NLHydro
To: Lower Churchill Project Staff, D_STJ_LowerChurchill_AllUsers <D_STJ_LowerChurchill_AllUsers@snclavalin.com>
Cc: Paul Harrington/NLHydro@NLHydro, "John Husch" <John.Husch@snclavalin.com>
Date: 03/12/2013 10:42 PM
Subject: Announcement: Integration Management Team

I am pleased to advise that the organizational structure for the Integrated Management Team responsible for execution of engineering, procurement and construction management for the Lower Churchill Project has been finalized.

The team will be led by Paul Harrington, Project Director, who will report directly to me.

Direct reports to Paul will be Lance Clarke, Business Services Manager, Ron Power, General Project

Manager, and Greg Fleming, Project Manager - SOBI Crossing. Normand Bechard will fill the role of Sr. SLI Manager / Construction Advisor, reporting to Ron.

The attached chart provides the organization structure of the team.

We can also count on the support of the LCP Executive Committee in our efforts to successfully deliver our Project.

Regards,

Gilbert



Gilbert J. Bennett, P. Eng.

Vice President, Lower

Churchill Project

Nalcor Energy

t. 709 737 1836 f. 709 737

1782

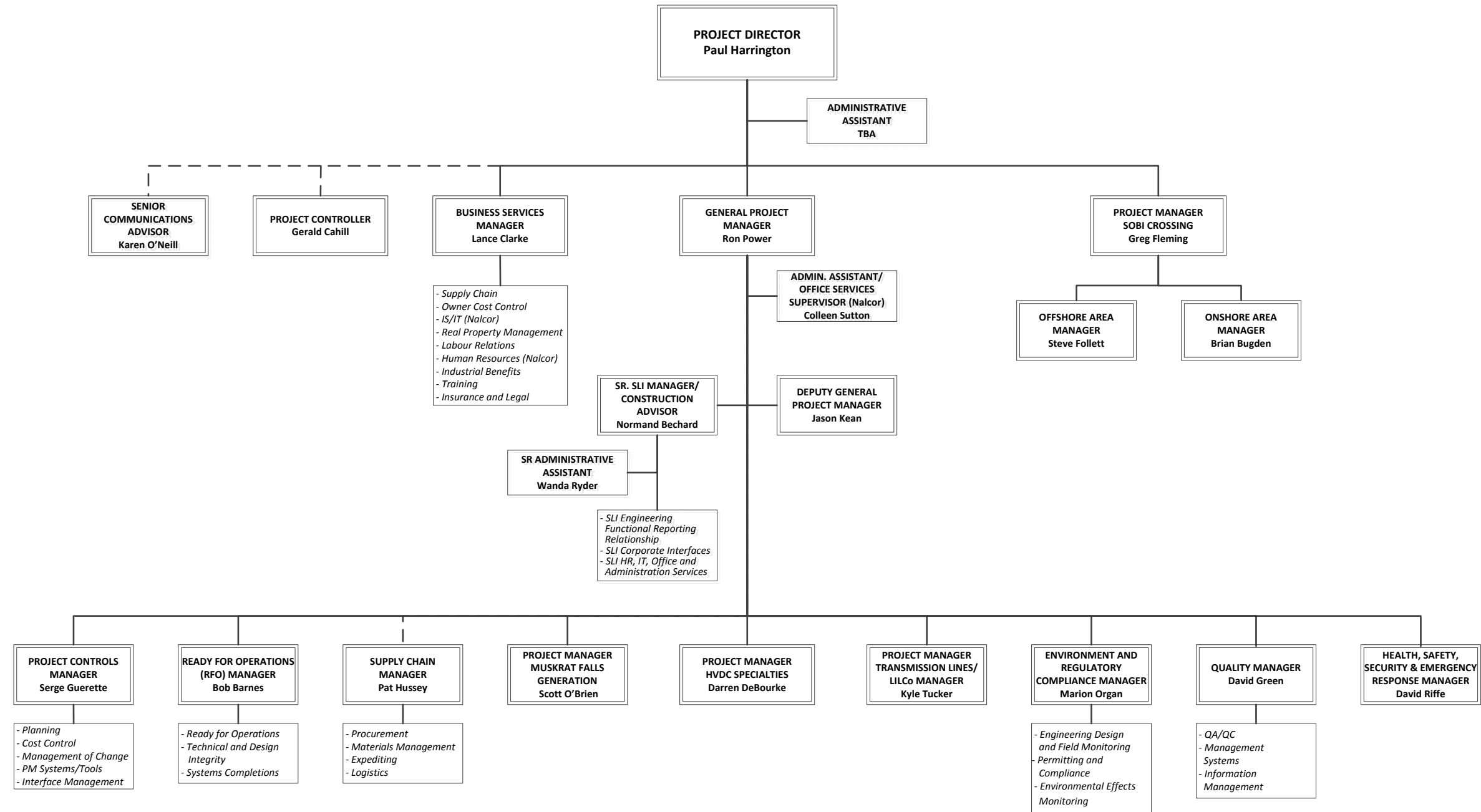
e.

gbennett@nalcorenergy.com

w. **nalcorenergy.com**

Lower Churchill Project

Chart LCP1: Integrated Management Team



REPORTING LEGEND

- Direct Reporting
- - - In-Direct Reporting