

**COX & PALMER** | [coxandpalmerlaw.com](http://coxandpalmerlaw.com)

New Brunswick | Newfoundland and Labrador | Nova Scotia | Prince Edward Island

March 9, 2012

Via Courier

Board of Commissioners of Public Utilities  
120 Torbay Road  
St. John's, NL A1A 5B2

Attention: **Maureen P. Greene, Q.C.**  
**Legal Counsel**



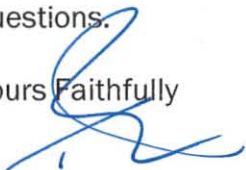
Dear Ms. Greene

**RE: Reference from Lieutenant-Governor in Council on the Muskrat Falls Project  
(the "Muskrat Falls Review")**

Further to our telephone conversation of earlier today I am enclosing a copy of Revision 1 to Appendix A of Nalcor Exhibit 97. This document, which has only recently been received, contains the most current data respecting Nalcor's Meteorological Studies on the Labrador - Island Transmission Link. This Revision is being provided to the Board so that it may have available to it the most current data on this subject as it prepares its report on the Reference question. We ask that this Revision be filed as a revision to Exhibit 97.

Please feel free to contact the undersigned respecting this matter should you have any questions.

Yours Faithfully

  
Thomas J. O'Reilly Q.C.

c.c. Thomas Johnson  
Consumer Advocate  
O'Dea, Earle  
323 Duckworth Street  
St. John's, NL A1C 5X4  
Via Courier

**Thomas J. O'Reilly, Q.C.** | Partner

Direct 709 570 5320 Main 709 738 7800 Fax 709 726 3070 Email [toreilly@coxandpalmer.com](mailto:toreilly@coxandpalmer.com)  
Suite 1000 Scotia Centre 235 Water Street St. John's NL A1C 1B6

**APPENDIX A – Ice Loading Region Maps**

Appendix A updated with current meteorological loadings. Loadings are highlighted in each zone



**Zone 1 – Inner Labrador**

Average Meteorological Loading Zone

Maximum Ice: 50 mm glaze, Maximum Wind: 105 km/h, Combined Ice and Wind: 25 mm glaze and 60 km/h



**Zone 2a – Alpine Labrador**

High Alpine Meteorological Loading Zone

Maximum Ice: 115 mm (Rime), Maximum Wind: 135 km/h, Combined Ice and Wind: 60 mm (Rime) and 95 km/h





**Zone 3 – Labrador Coast**

Average Meteorological Loading Zone

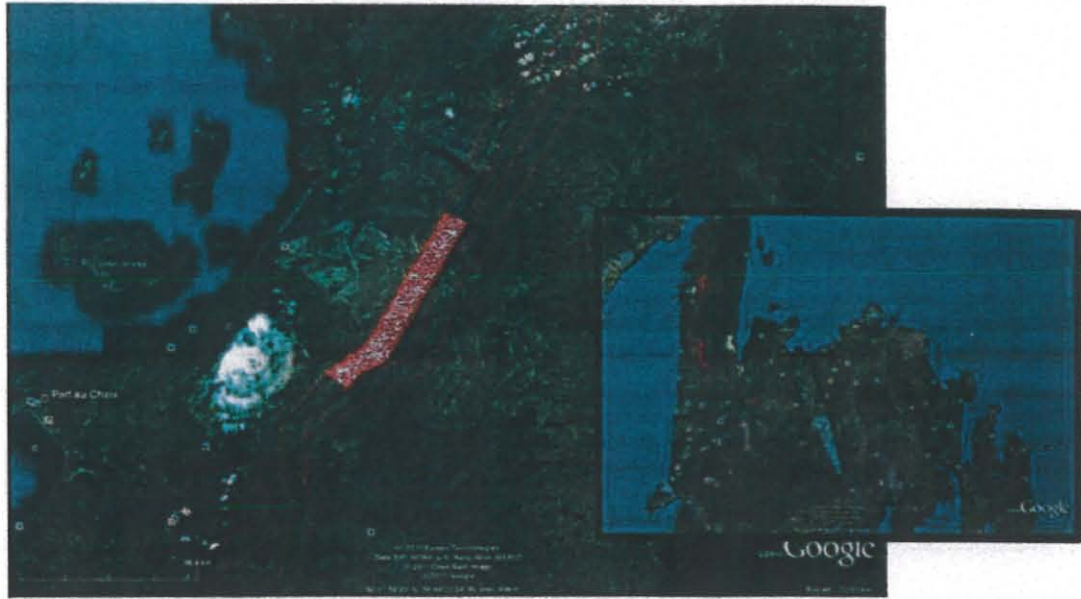
Maximum Ice: 50 mm (Glaze), Maximum Wind: 120 km/h, Combined Ice and Wind: 25 mm (Glaze) and 60 km/h



**Zone 4 – Northern Peninsula Coast**

Average Meteorological Loading Zone

Maximum Ice: 50 mm (Glaze), Maximum Wind: 120 km/h, Combined Ice and Wind: 25 mm (Glaze) and 60 km/h



**Zone 5 – Highlands of St. John**

High Alpine Meteorological Loading Zone (Western Corridor Alternative Only)

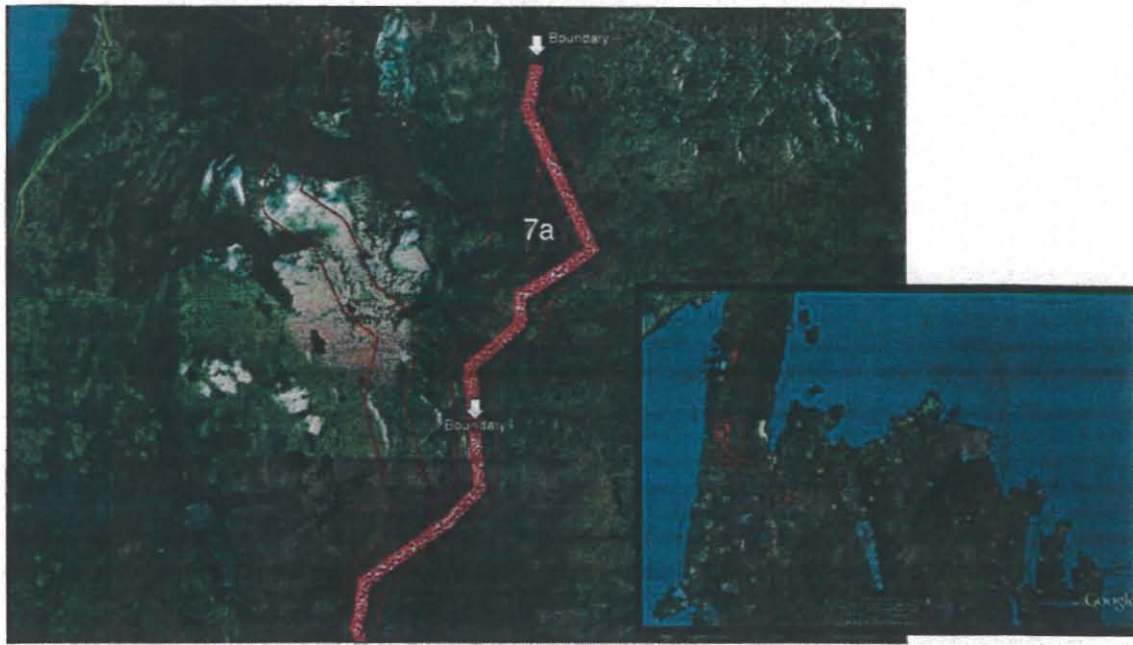
Maximum Ice: 115 mm (Rime), Maximum Wind: 150 km/h, Combined Ice and Wind: 60 mm (Rime) and 105 km/h



**Zone 6 –Northern Peninsula**

Average Meteorological Loading Zone

Maximum Ice: 50 mm (Glaze), Maximum Wind: 120 km/h, Combined Ice and Wind: 25 mm (Glaze) and 60 km/h



**Zone 7a – Long Range Mountains Crossing**

High Alpine Meteorological Loading Zone (Eastern Corridor Alternative Only)

Maximum Ice: 115 mm (Rime), Maximum Wind: 180 km/h, Combined Ice and Wind: 60 mm (Rime) and 125 km/h



**Zone 7b – Long Range Mountains Crossing**

Extreme Alpine Meteorological Loading Zone (Eastern Corridor Alternative Only)

Maximum Ice: 135 mm (Rime), Maximum Wind: 180 km/h, Combined Ice and Wind: 70 mm (Rime) and 125 km/h



**Zone 7c – Long Range Mountains Crossing**

High Alpine Meteorological Loading Zone

Maximum Ice: 115 mm (Rime), Maximum Wind: 180 km/h, Combined Ice and Wind: 60 mm (Rime) and 125 km/h



**Zone 8a – Central-West Newfoundland**

Average Meteorological Loading Zone

Maximum Ice: 50 mm (Glaze), Maximum Wind: 120 km/h, Combined Ice and Wind: 25 mm (Glaze) and 60 km/h





**Zone 8b – Central-West Newfoundland**

Average Meteorological Loading Zone

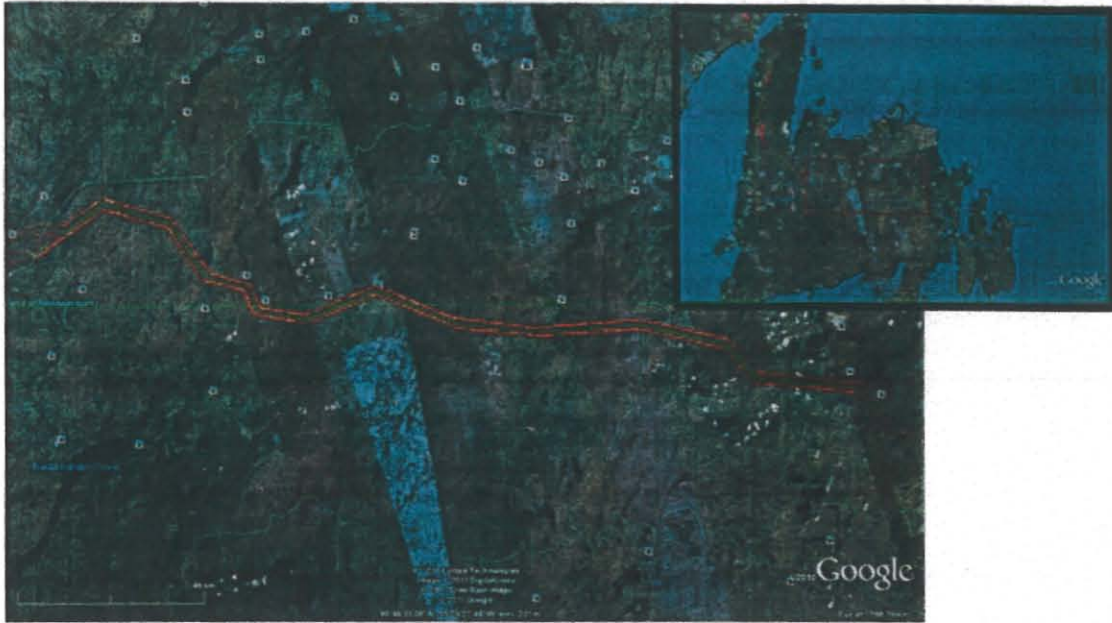
Maximum Ice: 50 mm (Glaze), Maximum Wind: 105 km/h, Combined Ice and Wind: 25 mm (Glaze) and 60 km/h



**Zone 9 – The Birchy Narrows**

Alpine Meteorological Loading Zone (Northern Corridor Alternative Only)

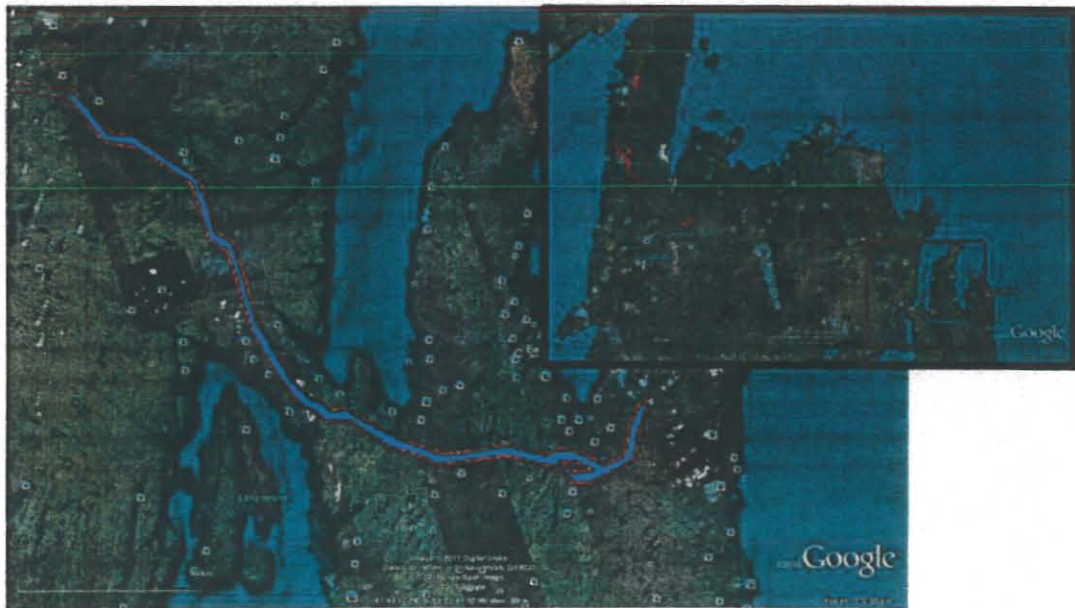
Maximum Ice: 75 mm (Glaze), Maximum Wind: 130 km/h, Combined Ice and Wind: 45 mm (Glaze) and 60 km/h



**Zone 10 – Central-East Newfoundland**

Average Meteorological Loading Zone

Maximum Ice: 50 mm (Glaze), Maximum Wind: 105 km/h, Combined Ice and Wind: 25 mm (Glaze) and 60 km/h



**Zone 11 – Eastern Newfoundland**

Eastern Meteorological Loading Zone

Maximum Ice: 75 mm (Glaze), Maximum Wind: 130 km/h, Combined Ice and Wind: 45 mm (Glaze) and 60 km/h